

DATASHEET

Kv5.1 Rabbit Polyclonal Antibody

CAT. NO. APA10774

KEY FEATURES

Target	Kv5.1	Source / Host	Rabbit
Reactivity	Human, Mouse, Rat, Monkey	Clonality	Polyclonal
Applications	WB	Conjugation	Unconjugated
Form / Buffer	Liquid in 0.42% Potassium phosphate, 0.87% Sodium chloride, pH 7.3, 30% glycerol, and 0.01% sodium azide.		Storage at -20°C

BACKGROUND

Regulatory alpha-subunit of the voltage-gated potassium (Kv) channel which, when coassembled with KCNB1 or KCNB2, can modulate their expression and their gating kinetics by acting on deactivation upon repolarization and inactivation during maintained depolarization. Accelerates inactivation but has relatively little effect on deactivation. Coexpression with KCNB1 or KCNB2 markedly slows inactivation. Each modulatory subunit has its own specific properties of regulation, and can lead to extensive inhibitions, to large changes in kinetics, and/or to large shifts in the voltage dependencies of the inactivation process. The gating kinetics depends on the nature and stoichiometry of the associated regulatory subunit. Fails to produce a potassium current when expressed alone.

APPLICATION

To ensure optimal assay performance, AREX recommends conducting reagent titration tailored to each testing system for optimal detection results.

WB	1:500 - 1:1000
----	----------------

*Results are sample-specific. Please refer to your local assay conditions and test parameters for reference.

PRODUCT OVERVIEW

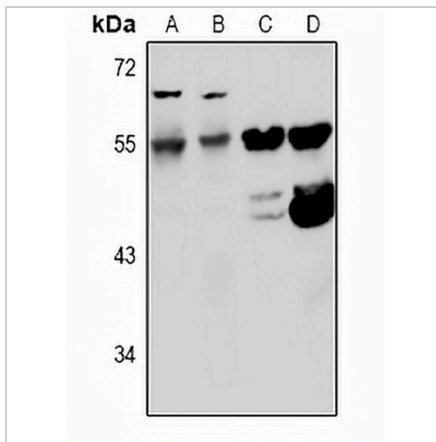
Description	Rabbit polyclonal antibody to Kv5.1
Specificity	Recognizes endogenous levels of Kv5.1 protein.
Antibody Type	Primary antibody
Immunogen	KLH-conjugated synthetic peptide encompassing a sequence within the center region of human Kv5.1. The exact sequence is proprietary.
Purification	The antibody was purified by immunogen affinity chromatography.
Molecular Weight	Predicted: 55 kD; Observed: 55 kD
Form/Buffer	Liquid in 0.42% Potassium phosphate, 0.87% Sodium chloride, pH 7.3, 30% glycerol, and 0.01% sodium azide.
Alternative Names	Potassium voltage-gated channel subfamily F member 1; Voltage-gated potassium channel subunit Kv5.1; KH1
Gene Symbol	KCNF1
Entrez Gene	3754(Human); 382571(Mouse)
SwissProt	Q9H3M0(Human); Q7TSH7(Mouse)

*AREX continuously optimizes our products. Webpage content may not reflect the latest updates. For inquiries, please contact info@arexbio.com or your local distributor.

*Clone Number, Reactivity, Source/Host and Clonality can be found in the product name and Key Features section above.

DATASHEET**Kv5.1 Rabbit Polyclonal Antibody**

CAT. NO. APA10774

DATA

Western blot analysis of Kv5.1 expression in COS7 (A), Panc1 (B), mouse heart (C), rat heart (D) whole cell lysates. (Predicted band size: 55 kD; Observed band size: 55 kD)

STORAGE

Store at 4°C short term. For long term storage, store at -20°C, avoiding freeze/thaw cycles.

NOTE

For Research Use Only. Not for diagnostic, therapeutics, prophylactic or in vivo use.