

## DATASHEET

# POTEG Rabbit Polyclonal Antibody

CAT. NO. APA10776

### KEY FEATURES

Target	POTEG	Source / Host	Rabbit
Reactivity	Human, Mouse, Rat	Clonality	Polyclonal
Applications	WB, IHC	Conjugation	Unconjugated
Form / Buffer	Liquid in 0.42% Potassium phosphate, 0.87% Sodium chloride, pH 7.3, 30% glycerol, and 0.01% sodium azide.		Storage at -20°C

### BACKGROUND

POTE ankyrin domain family member G. Also known as: POTE ankyrin domain family member G; ANKRD26-like family C member 2; cancer/testis antigen family 104, member 4; prostate, ovary, testis-expressed protein on chromosome 14; protein expressed in prostate, ovary, testis, and placenta 14.

### APPLICATION

To ensure optimal assay performance, AREX recommends conducting reagent titration tailored to each testing system for optimal detection results.

WB	1:500 - 1:1000
IHC	1:50 - 1:100

\*Results are sample-specific. Please refer to your local assay conditions and test parameters for reference.

### PRODUCT OVERVIEW

Description	Rabbit polyclonal antibody to POTEG
Specificity	Recognizes endogenous levels of POTEG protein.
Antibody Type	Primary antibody
Immunogen	KLH-conjugated synthetic peptide encompassing a sequence within the C-term region of human POTEG. The exact sequence is proprietary.
Purification	The antibody was purified by immunogen affinity chromatography.
Molecular Weight	Predicted: 57; Observed: 57; 54 kD
Form/Buffer	Liquid in 0.42% Potassium phosphate, 0.87% Sodium chloride, pH 7.3, 30% glycerol, and 0.01% sodium azide.
Alternative Names	POTEG; A26C2; POTE14; POTE ankyrin domain family member G; ANKRD26-like family C member 2; Prostate ovary testis-expressed protein on chromosome 14; POTE-14; POTEH; A26C3; ACTBL1; POTE22; POTE ankyrin domain family member H; ANKRD26-like family C member 3; Prostate ovary testis-expressed protein on chromosome 22; POTE-22; POTE M; Putative POTE ankyrin domain family member M
Gene Symbol	POTEG
Entrez Gene	404785; 23784(Human)
SwissProt	Q6S5H5; Q6S545; A6NI47(Human)

\*AREX continuously optimizes our products. Webpage content may not reflect the latest updates. For inquiries, please contact [info@arexbio.com](mailto:info@arexbio.com) or your local distributor.

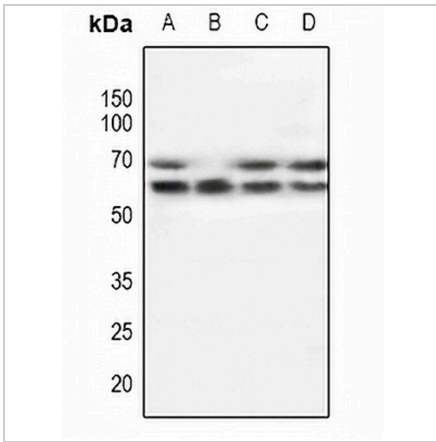
\*Clone Number, Reactivity, Source/Host and Clonality can be found in the product name and Key Features section above.

**DATASHEET**

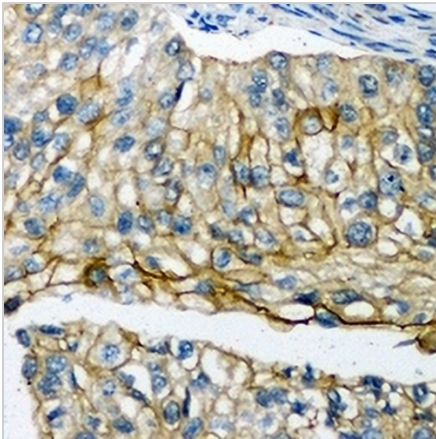
**POTEG Rabbit Polyclonal Antibody**

CAT. NO. APA10776

**DATA**



Western blot analysis of POTEG expression in A549 (A), mouse testis (B), rat testis (C), mouse brain (D) whole cell lysates. (Predicted band size: 57; 60 kD; Observed band size: 57; 54 kD)



Immunohistochemical analysis of POTEG staining in human prostate cancer formalin fixed paraffin embedded tissue section. The section was pre-treated using heat mediated antigen retrieval with sodium citrate buffer (pH 6.0). The section was then incubated with the antibody at room temperature and detected using an HRP conjugated compact polymer system. DAB was used as the chromogen. The section was then counterstained with haematoxylin and mounted with DPX.

**STORAGE**

Store at 4°C short term. For long term storage, store at -20°C, avoiding freeze/thaw cycles.

**NOTE**

For Research Use Only. Not for diagnostic, therapeutics, prophylactic or in vivo use.