

**DATASHEET**

**PPP1R16B Rabbit Polyclonal Antibody**

CAT. NO. APA10779

**KEY FEATURES**

Target	PPP1R16B	Source / Host	Rabbit
Reactivity	Human, Mouse	Clonality	Polyclonal
Applications	WB	Conjugation	Unconjugated
Form / Buffer	Liquid in 0.42% Potassium phosphate, 0.87% Sodium chloride, pH 7.3, 30% glycerol, and 0.01% sodium azide.		Storage at-20°C

**BACKGROUND**

Regulator of protein phosphatase 1 (PP1) that acts as a positive regulator of pulmonary endothelial cell (EC) barrier function that acts as a positive regulator of pulmonary endothelial cell (EC) barrier function . Involved in the regulation of the PI3K/AKT signaling pathway, angiogenesis and endothelial cell proliferation . Regulates angiogenesis and endothelial cell proliferation through the control of ECE1 dephosphorylation, trafficking and activity . Protects the endothelial barrier from lipopolysaccharide (LPS)-induced vascular leakage . Involved in the regulation of endothelial cell filopodia extension . May be a downstream target for TGF-beta1 signaling cascade in endothelial cells .

**APPLICATION**

To ensure optimal assay performance, AREX recommends conducting reagent titration tailored to each testing system for optimal detection results.

WB	1:500 - 1:1000
----	----------------

\*Results are sample-specific. Please refer to your local assay conditions and test parameters for reference.

**PRODUCT OVERVIEW**

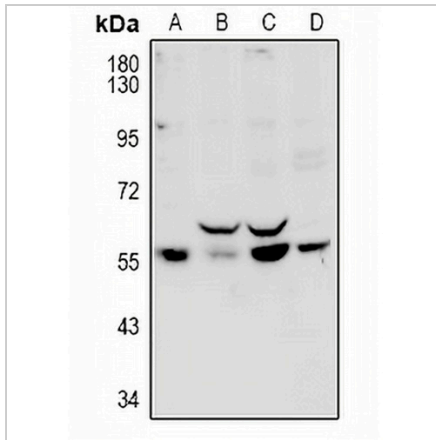
Description	Rabbit polyclonal antibody to PPP1R16B
Specificity	Recognizes endogenous levels of PPP1R16B protein.
Antibody Type	Primary antibody
Immunogen	KLH-conjugated synthetic peptide encompassing a sequence within the center region of human PPP1R16B. The exact sequence is proprietary.
Purification	The antibody was purified by immunogen affinity chromatography.
Molecular Weight	Predicted: 63 kD; Observed: 64; 59 kD
Form/Buffer	Liquid in 0.42% Potassium phosphate, 0.87% Sodium chloride, pH 7.3, 30% glycerol, and 0.01% sodium azide.
Alternative Names	ANKRD4; KIAA0823; Protein phosphatase 1 regulatory inhibitor subunit 16B; Ankyrin repeat domain-containing protein 4; CAAX box protein TIMAP; TGF-beta-inhibited membrane-associated protein; hTIMAP
Gene Symbol	PPP1R16B
Entrez Gene	26051(Human); 228852(Mouse)
SwissProt	Q96T49(Human); Q8VHQ3(Mouse)

\*AREX continuously optimizes our products. Webpage content may not reflect the latest updates. For inquiries, please contact [info@arexbio.com](mailto:info@arexbio.com) or your local distributor.

\*Clone Number, Reactivity, Source/Host and Clonality can be found in the product name and Key Features section above.

**DATASHEET****PPP1R16B Rabbit Polyclonal Antibody**

CAT. NO. APA10779

**DATA**

Western blot analysis of PPP1R16B expression in HEK293T (A), U87MG (B), C6 (C), CT26 (D) whole cell lysates. (Predicted band size: 63 kD; Observed band size: 64; 59 kD)

**STORAGE**

Store at 4°C short term. For long term storage, store at -20°C, avoiding freeze/thaw cycles.

**NOTE**

For Research Use Only. Not for diagnostic, therapeutics, prophylactic or in vivo use.