

DATASHEET

RAB3GAP2 Rabbit Polyclonal Antibody

CAT. NO. APA10786

KEY FEATURES

Target	RAB3GAP2	Source / Host	Rabbit
Reactivity	Human, Mouse, Rat, Monkey	Clonality	Polyclonal
Applications	WB, IHC	Conjugation	Unconjugated
Form / Buffer	Liquid in 0.42% Potassium phosphate, 0.87% Sodium chloride, pH 7.3, 30% glycerol, and 0.01% sodium azide.		Storage at -20°C

BACKGROUND

Regulatory subunit of the Rab3 GTPase-activating (Rab3GAP) complex composed of RAB3GAP1 and RAB3GAP2, which accelerates the otherwise slow GTP hydrolysis catalyzed by Rab proteins complex composed of RAB3GAP1 and RAB3GAP2, which accelerates the otherwise slow GTP hydrolysis catalyzed by Rab proteins . The complex has GTPase-activating protein (GAP) activity towards various Rab3 subfamily members (RAB3A, RAB3B, RAB3C and RAB3D), RAB5A and RAB43, and has guanine nucleotide exchange factor (GEF) activity towards RAB18 . The Rab3GAP complex acts as a GEF for RAB18 by promoting GDP release from RAB18 and the conversion of inactive RAB18-GDP to the active form RAB18-GTP . Recruits and stabilizes RAB18 at the cis-Golgi membrane in human fibroblasts where RAB18 is most likely activated .

APPLICATION

To ensure optimal assay performance, AREX recommends conducting reagent titration tailored to each testing system for optimal detection results.

WB	1:500 - 1:1000
IHC	1:50 - 1:100

*Results are sample-specific. Please refer to your local assay conditions and test parameters for reference.

PRODUCT OVERVIEW

Description	Rabbit polyclonal antibody to RAB3GAP2
Specificity	Recognizes endogenous levels of RAB3GAP2 protein.
Antibody Type	Primary antibody
Immunogen	KLH-conjugated synthetic peptide encompassing a sequence within the center region of human RAB3GAP2. The exact sequence is proprietary.
Purification	The antibody was purified by immunogen affinity chromatography.
Molecular Weight	Predicted: 155 kD; Observed: 156 kD
Form/Buffer	Liquid in 0.42% Potassium phosphate, 0.87% Sodium chloride, pH 7.3, 30% glycerol, and 0.01% sodium azide.
Alternative Names	KIAA0839; Rab3 GTPase-activating protein non-catalytic subunit; RGAP-iso; Rab3 GTPase-activating protein 150 kDa subunit; Rab3-GAP p150; Rab3-GAP150; Rab3-GAP regulatory subunit
Gene Symbol	RAB3GAP2
Entrez Gene	25782(Human); 98732(Mouse); 289350(Rat)
SwissProt	Q9H2M9(Human); Q8BMG7(Mouse); Q5U1Z0(Rat)

*AREX continuously optimizes our products. Webpage content may not reflect the latest updates. For inquiries, please contact info@arexbio.com or your local distributor.

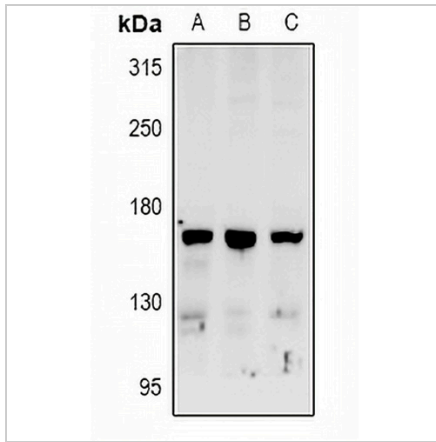
*Clone Number, Reactivity, Source/Host and Clonality can be found in the product name and Key Features section above.

DATASHEET

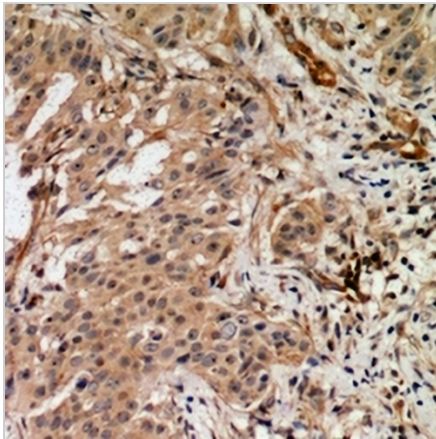
RAB3GAP2 Rabbit Polyclonal Antibody

CAT. NO. APA10786

DATA



Western blot analysis of RAB3GAP2 expression in MCF7 (A), SGC7901 (B), A549 (C) whole cell lysates. (Predicted band size: 155 kD; Observed band size: 156 kD)



Immunohistochemical analysis of RAB3GAP2 staining in human breast cancer formalin fixed paraffin embedded tissue section. The section was pre-treated using heat mediated antigen retrieval with sodium citrate buffer (pH 6.0). The section was then incubated with the antibody at room temperature and detected using an HRP conjugated compact polymer system. DAB was used as the chromogen. The section was then counterstained with haematoxylin and mounted with DPX.

STORAGE

Store at 4°C short term. For long term storage, store at -20°C, avoiding freeze/thaw cycles.

NOTE

For Research Use Only. Not for diagnostic, therapeutics, prophylactic or in vivo use.