

DATASHEET

RGPD1/2/3/4/5/8 Rabbit Polyclonal Antibody

CAT. NO. APA10788

KEY FEATURES

| | | | |
|---------------|---|---------------|---------------------|
| Target | RGPD1/2/3/4/5/8 | Source / Host | Rabbit |
| Reactivity | Human, Rat | Clonality | Polyclonal |
| Applications | WB, IHC | Conjugation | Unconjugated |
| Form / Buffer | Liquid in 0.42% Potassium phosphate, 0.87% Sodium chloride, pH 7.3, 30% glycerol, and 0.01% sodium azide. | | Storage at -20°C |

BACKGROUND

RANBP2-like and GRIP domain-containing protein 1 (RGPD1), also known as Ran-binding protein 2-like 6, RanBP2-like 6, RanBP2L6.

APPLICATION

To ensure optimal assay performance, AREX recommends conducting reagent titration tailored to each testing system for optimal detection results.

| | |
|-----|----------------|
| WB | 1:500 - 1:1000 |
| IHC | 1:50 - 1:200 |

*Results are sample-specific. Please refer to your local assay conditions and test parameters for reference.

PRODUCT OVERVIEW

| | |
|-------------------|---|
| Description | Rabbit polyclonal antibody to RGPD1/2/3/4/5/8 |
| Specificity | Recognizes endogenous levels of RGPD1/2/3/4/5/8 protein. |
| Antibody Type | Primary antibody |
| Immunogen | KLH-conjugated synthetic peptide encompassing a sequence within the C-term region of human RGPD1/2/3/4/5/8. The exact sequence is proprietary. |
| Purification | The antibody was purified by immunogen affinity chromatography. |
| Molecular Weight | Predicted: 196; Observed: 198 kD |
| Form/Buffer | Liquid in 0.42% Potassium phosphate, 0.87% Sodium chloride, pH 7.3, 30% glycerol, and 0.01% sodium azide. |
| Alternative Names | RANBP2L6; RGP1; RANBP2-like and GRIP domain-containing protein 1; Ran-binding protein 2-like 6; RanBP2-like 6; RanBP2L6; RANBP2L2; RGP2; RANBP2-like and GRIP domain-containing protein 2; Ran-binding protein 2-like 2; RanBP2-like 2; RanBP2L2; RGP3; RanBP2-like and GRIP domain-containing protein 3; RGP4; RanBP2-like and GRIP domain-containing protein 4; RANBP2L1; RGP5; RGP7; RGP7; RGP7; RANBP2L2; RGP6; RANBP2-like and GRIP domain-containing protein 5/6; Ran-binding protein 2-like 1/2; RanBP2-like 1/2; RanBP2L1; RanBP2L2; Sperm membrane protein BS-63; RANBP2ALPHA; RANBP2L1; RANBP2L3; RANBP2-like and GRIP domain-containing protein 8; Ran-binding protein 2-like 3; RanBP2-like 3; RanBP2L3 |
| Gene Symbol | RGPD1; RGPD2; RGPD3; RGPD4; RGP5; RGP7; RGP8 |
| Entrez Gene | 729540; 84220; 729857(Human) |
| SwissProt | P0DJ00; P0DJ01; A6NKT7; Q7Z3J3; Q99666; O14715(Human) |

*AREX continuously optimizes our products. Webpage content may not reflect the latest updates. For inquiries, please contact info@arexbio.com or your local distributor.

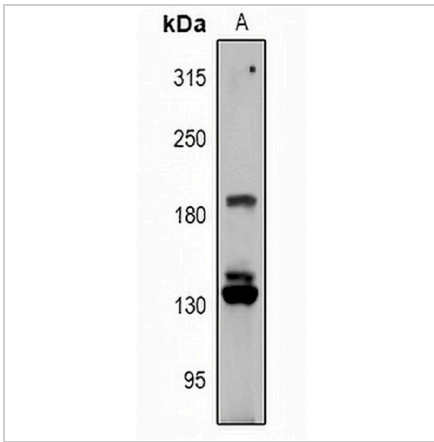
*Clone Number, Reactivity, Source/Host and Clonality can be found in the product name and Key Features section above.

DATASHEET

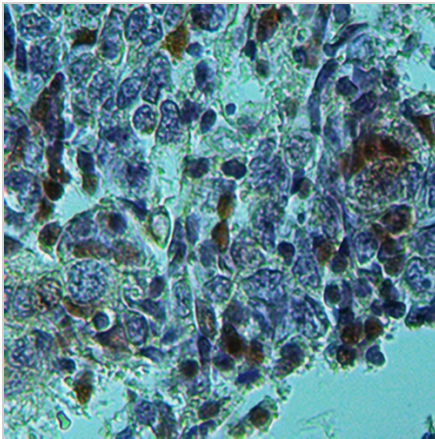
RGPD1/2/3/4/5/8 Rabbit Polyclonal Antibody

CAT. NO. APA10788

DATA



Western blot analysis of RGPD1/2/3/4/5/8 expression in MCF7 (A) whole cell lysates. (Predicted band size: 196; 197; 198 kD; Observed band size: 198 kD)



Immunohistochemical analysis of RGPD1/2/3/4/5/8 Antibody staining in human liver cancer formalin fixed paraffin embedded tissue section. The section was pre-treated using heat mediated antigen retrieval with sodium citrate buffer (pH 6.0). The section was then incubated with the antibody at room temperature and detected using an HRP conjugated compact polymer system. DAB was used as the chromogen. The section was then counterstained with haematoxylin and mounted with DPX.

STORAGE

Store at 4°C short term. For long term storage, store at -20°C, avoiding freeze/thaw cycles.

NOTE

For Research Use Only. Not for diagnostic, therapeutics, prophylactic or in vivo use.