

DATASHEET

ARHGEF12 Rabbit Polyclonal Antibody

CAT. NO. APA10793

KEY FEATURES

Target	ARHGEF12	Source / Host	Rabbit
Reactivity	Human, Mouse, Rat	Clonality	Polyclonal
Applications	WB, IHC	Conjugation	Unconjugated
Form / Buffer	Liquid in 0.42% Potassium phosphate, 0.87% Sodium chloride, pH 7.3, 30% glycerol, and 0.01% sodium azide.		Storage at-20°C

BACKGROUND

Acts as guanine nucleotide exchange factor (GEF) for RhoA GTPase and may act as GTPase-activating protein (GAP) for GNA12 and GNA13 for RhoA GTPase and may act as GTPase-activating protein (GAP) for GNA12 and GNA13 . May play a role in the regulation of RhoA GTPase by guanine nucleotide-binding alpha-12 (GNA12) and alpha-13 (GNA13) . Promotes endothelial cell and actin stress fiber reorientation in response to mechanotransduction .

APPLICATION

To ensure optimal assay performance, AREX recommends conducting reagent titration tailored to each testing system for optimal detection results.

WB	1:500 - 1:1000
IHC	1:50 - 1:100

*Results are sample-specific. Please refer to your local assay conditions and test parameters for reference.

PRODUCT OVERVIEW

Description	Rabbit polyclonal antibody to ARHGEF12
Specificity	Recognizes endogenous levels of ARHGEF12 protein.
Antibody Type	Primary antibody
Immunogen	KLH-conjugated synthetic peptide encompassing a sequence within the center region of human ARHGEF12. The exact sequence is proprietary.
Purification	The antibody was purified by immunogen affinity chromatography.
Molecular Weight	Predicted: 173 kD; Observed: 200 kD
Form/Buffer	Liquid in 0.42% Potassium phosphate, 0.87% Sodium chloride, pH 7.3, 30% glycerol, and 0.01% sodium azide.
Alternative Names	KIAA0382; LARG; Rho guanine nucleotide exchange factor 12; Leukemia-associated RhoGEF
Gene Symbol	ARHGEF12
Entrez Gene	23365(Human); 69632(Mouse)
SwissProt	Q9NZN5(Human); Q8R4H2(Mouse)

*AREX continuously optimizes our products. Webpage content may not reflect the latest updates. For inquiries, please contact info@arexbio.com or your local distributor.

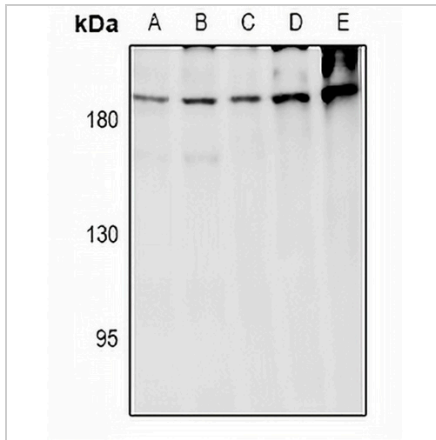
*Clone Number, Reactivity, Source/Host and Clonality can be found in the product name and Key Features section above.

DATASHEET

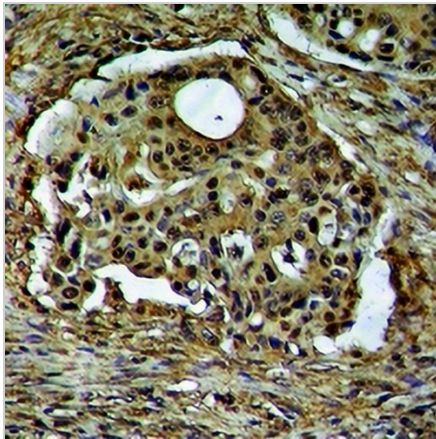
ARHGEF12 Rabbit Polyclonal Antibody

CAT. NO. APA10793

DATA



Western blot analysis of ARHGEF12 expression in A549 (A), LO2 (B), HEK293T (C), CT26 (D), PC12 (E) whole cell lysates. (Predicted band size: 173 kD; Observed band size: 200 kD)



Immunohistochemical analysis of ARHGEF12 staining in human liver cancer formalin fixed paraffin embedded tissue section. The section was pre-treated using heat mediated antigen retrieval with sodium citrate buffer (pH 6.0). The section was then incubated with the antibody at room temperature and detected using an HRP conjugated compact polymer system. DAB was used as the chromogen. The section was then counterstained with haematoxylin and mounted with DPX.

STORAGE

Store at 4°C short term. For long term storage, store at -20°C, avoiding freeze/thaw cycles.

NOTE

For Research Use Only. Not for diagnostic, therapeutics, prophylactic or in vivo use.