

## DATASHEET

# RCL1 Rabbit Polyclonal Antibody

CAT. NO. APA10795

### KEY FEATURES

Target	RCL1	Source / Host	Rabbit
Reactivity	Human, Mouse, Bovine, Monkey	Clonality	Polyclonal
Applications	WB	Conjugation	Unconjugated
Form / Buffer	Liquid in 0.42% Potassium phosphate, 0.87% Sodium chloride, pH 7.3, 30% glycerol, and 0.01% sodium azide.		Storage at -20°C

### BACKGROUND

As part of the small subunit (SSU) processome, it plays a role in 40S-ribosomal-subunit biogenesis in the early pre-rRNA processing steps at sites A0, A1 and A2 that are required for proper maturation of the 18S RNA. Activates BMS1 by promoting GDP/GTP exchange. Does not have cyclase activity.

### APPLICATION

To ensure optimal assay performance, AREX recommends conducting reagent titration tailored to each testing system for optimal detection results.

WB	1:500 - 1:1000
----	----------------

\*Results are sample-specific. Please refer to your local assay conditions and test parameters for reference.

### PRODUCT OVERVIEW

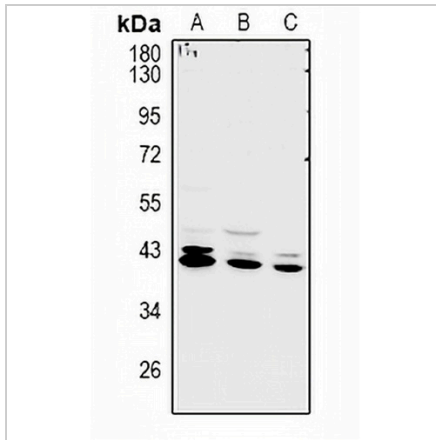
Description	Rabbit polyclonal antibody to RCL1
Specificity	Recognizes endogenous levels of RCL1 protein.
Antibody Type	Primary antibody
Immunogen	KLH-conjugated synthetic peptide encompassing a sequence within the C-term region of human RCL1. The exact sequence is proprietary.
Purification	The antibody was purified by immunogen affinity chromatography.
Molecular Weight	Predicted: 40 kD; Observed: 41 kD
Form/Buffer	Liquid in 0.42% Potassium phosphate, 0.87% Sodium chloride, pH 7.3, 30% glycerol, and 0.01% sodium azide.
Alternative Names	RNAC; RPC2; RPCL1; RTC2; RNA 3'-terminal phosphate cyclase-like protein
Gene Symbol	RCL1
Entrez Gene	10171(Human); 59028(Mouse)
SwissProt	Q9Y2P8(Human); Q9JJT0(Mouse)

\*AREX continuously optimizes our products. Webpage content may not reflect the latest updates. For inquiries, please contact [info@arexbio.com](mailto:info@arexbio.com) or your local distributor.

\*Clone Number, Reactivity, Source/Host and Clonality can be found in the product name and Key Features section above.

**DATASHEET****RCL1 Rabbit Polyclonal Antibody**

CAT. NO. APA10795

**DATA**

Western blot analysis of RCL1 expression in LO2 (A), A549 (B), COS7 (C) whole cell lysates.  
(Predicted band size: 40 kD; Observed band size: 41 kD)

**STORAGE**

Store at 4°C short term. For long term storage, store at -20°C, avoiding freeze/thaw cycles.

**NOTE**

For Research Use Only. Not for diagnostic, therapeutics, prophylactic or in vivo use.