

DATASHEET

PPP2R2B Rabbit Polyclonal Antibody

CAT. NO. APA10804

KEY FEATURES

Target	PPP2R2B	Source / Host	Rabbit
Reactivity	Human, Mouse, Rat, Bovine, Monkey, Pig	Clonality	Polyclonal
Applications	WB	Conjugation	Unconjugated
Form / Buffer	Liquid in 0.42% Potassium phosphate, 0.87% Sodium chloride, pH 7.3, 30% glycerol, and 0.01% sodium azide.		Storage at -20°C

BACKGROUND

The B regulatory subunit might modulate substrate selectivity and catalytic activity, and might also direct the localization of the catalytic enzyme to a particular subcellular compartment. Within the PP2A holoenzyme complex, isoform 2 is required to promote proapoptotic activity . Isoform 2 regulates neuronal survival through the mitochondrial fission and fusion balance .

APPLICATION

To ensure optimal assay performance, AREX recommends conducting reagent titration tailored to each testing system for optimal detection results.

WB	1:500 - 1:1000
----	----------------

*Results are sample-specific. Please refer to your local assay conditions and test parameters for reference.

PRODUCT OVERVIEW

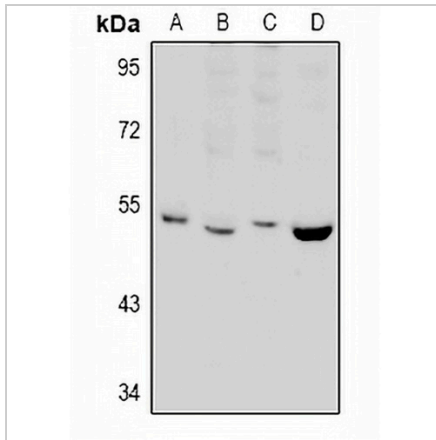
Description	Rabbit polyclonal antibody to PPP2R2B
Specificity	Recognizes endogenous levels of PPP2R2B protein.
Antibody Type	Primary antibody
Immunogen	KLH-conjugated synthetic peptide encompassing a sequence within the center region of human PPP2R2B. The exact sequence is proprietary.
Purification	The antibody was purified by immunogen affinity chromatography.
Molecular Weight	Predicted: 51 kD; Observed: 51 kD
Form/Buffer	Liquid in 0.42% Potassium phosphate, 0.87% Sodium chloride, pH 7.3, 30% glycerol, and 0.01% sodium azide.
Alternative Names	Serine/threonine-protein phosphatase 2A 55 kDa regulatory subunit B beta isoform; PP2A subunit B isoform B55-beta; PP2A subunit B isoform PR55-beta; PP2A subunit B isoform R2-beta; PP2A subunit B isoform beta
Gene Symbol	PPP2R2B
Entrez Gene	5521(Human); 72930(Mouse); 60660(Rat)
SwissProt	Q00005(Human); Q6ZWR4(Mouse); P36877(Rat)

*AREX continuously optimizes our products. Webpage content may not reflect the latest updates. For inquiries, please contact info@arexbio.com or your local distributor.

*Clone Number, Reactivity, Source/Host and Clonality can be found in the product name and Key Features section above.

DATASHEET**PPP2R2B Rabbit Polyclonal Antibody**

CAT. NO. APA10804

DATA

Western blot analysis of PPP2R2B expression in rat brain (A), HeLa (B), C6 (C), mouse brain (D) whole cell lysates. (Predicted band size: 51 kD; Observed band size: 51 kD)

STORAGE

Store at 4°C short term. For long term storage, store at -20°C, avoiding freeze/thaw cycles.

NOTE

For Research Use Only. Not for diagnostic, therapeutics, prophylactic or in vivo use.