

DATASHEET

Syndecan 2 Rabbit Polyclonal Antibody

CAT. NO. APA10813

KEY FEATURES

Target	Syndecan 2	Source / Host	Rabbit
Reactivity	Human, Mouse, Rat, Monkey	Clonality	Polyclonal
Applications	WB, IHC	Conjugation	Unconjugated
Form / Buffer	Liquid in 0.42% Potassium phosphate, 0.87% Sodium chloride, pH 7.3, 30% glycerol, and 0.01% sodium azide.	Storage	at-20°C

BACKGROUND

Cell surface proteoglycan which regulates dendritic arbor morphogenesis.

APPLICATION

To ensure optimal assay performance, AREX recommends conducting reagent titration tailored to each testing system for optimal detection results.

WB	1:500 - 1:1000
IHC	1:50 - 1:100

*Results are sample-specific. Please refer to your local assay conditions and test parameters for reference.

PRODUCT OVERVIEW

Description	Rabbit polyclonal antibody to Syndecan 2
Specificity	Recognizes endogenous levels of Syndecan 2 protein.
Antibody Type	Primary antibody
Immunogen	KLH-conjugated synthetic peptide encompassing a sequence within the center region of human Syndecan 2. The exact sequence is proprietary.
Purification	The antibody was purified by immunogen affinity chromatography.
Molecular Weight	Predicted: 22 kD; Observed: 22; 31 kD
Form/Buffer	Liquid in 0.42% Potassium phosphate, 0.87% Sodium chloride, pH 7.3, 30% glycerol, and 0.01% sodium azide.
Alternative Names	HSPG1; Syndecan-2; SYND2; Fibroglycan; Heparan sulfate proteoglycan core protein; HSPG; CD362
Gene Symbol	SDC2
Entrez Gene	6383(Human); 15529(Mouse); 25615(Rat)
SwissProt	P34741(Human); P43407(Mouse); P34900(Rat)

*AREX continuously optimizes our products. Webpage content may not reflect the latest updates. For inquiries, please contact info@arexbio.com or your local distributor.

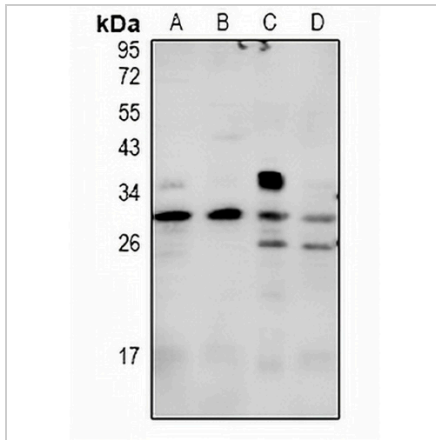
*Clone Number, Reactivity, Source/Host and Clonality can be found in the product name and Key Features section above.

DATASHEET

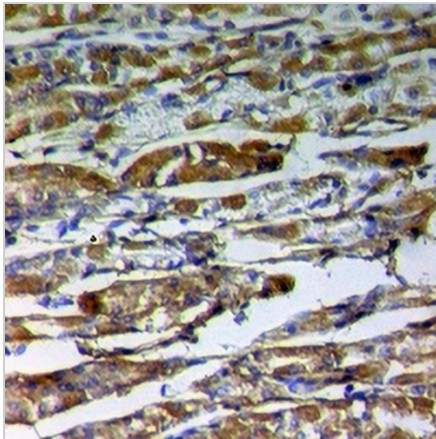
Syndecan 2 Rabbit Polyclonal Antibody

CAT. NO. APA10813

DATA



Western blot analysis of Syndecan 2 expression in COS7 (A), MCF7 (B), CT26 (C), PC12 (D) whole cell lysates. (Predicted band size: 22 kD; Observed band size: 22; 31 kD)



Immunohistochemical analysis of Syndecan 2 staining in human stomach cancer formalin fixed paraffin embedded tissue section. The section was pre-treated using heat mediated antigen retrieval with sodium citrate buffer (pH 6.0). The section was then incubated with the antibody at room temperature and detected using an HRP conjugated compact polymer system. DAB was used as the chromogen. The section was then counterstained with haematoxylin and mounted with DPX.

STORAGE

Store at 4°C short term. For long term storage, store at -20°C, avoiding freeze/thaw cycles.

NOTE

For Research Use Only. Not for diagnostic, therapeutics, prophylactic or in vivo use.