

**DATASHEET**

**CD6 Rabbit Polyclonal Antibody**

CAT. NO. APA10814

**KEY FEATURES**

Target	CD6	Source / Host	Rabbit
Reactivity	Human, Mouse, Rat	Clonality	Polyclonal
Applications	WB	Conjugation	Unconjugated
Form / Buffer	Liquid in 0.42% Potassium phosphate, 0.87% Sodium chloride, pH 7.3, 30% glycerol, and 0.01% sodium azide.		Storage at -20°C

**BACKGROUND**

Cell adhesion molecule that mediates cell-cell contacts and regulates T-cell responses via its interaction with ALCAM/CD166 . Contributes to signaling cascades triggered by activation of the TCR/CD3 complex . Functions as a costimulatory molecule; promotes T-cell activation and proliferation . Contributes to the formation and maturation of the immunological synapse . Functions as a calcium-dependent pattern receptor that binds and aggregates both Gram-positive and Gram-negative bacteria. Binds both lipopolysaccharide (LPS) from Gram-negative bacteria and lipoteichoic acid from Gram-positive bacteria . LPS binding leads to the activation of signaling cascades and down-stream MAP kinases .

**APPLICATION**

To ensure optimal assay performance, AREX recommends conducting reagent titration tailored to each testing system for optimal detection results.

WB	1:500 - 1:1000
----	----------------

\*Results are sample-specific. Please refer to your local assay conditions and test parameters for reference.

**PRODUCT OVERVIEW**

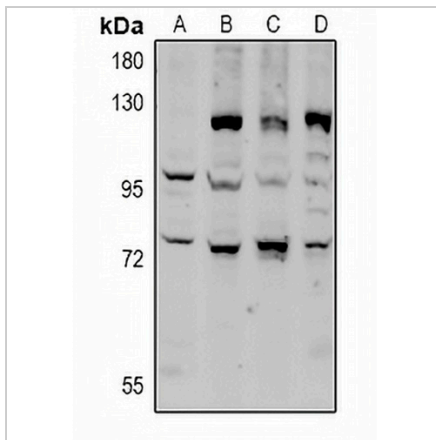
Description	Rabbit polyclonal antibody to CD6
Specificity	Recognizes endogenous levels of CD6 protein.
Antibody Type	Primary antibody
Immunogen	KLH-conjugated synthetic peptide encompassing a sequence within the center region of human CD6. The exact sequence is proprietary.
Purification	The antibody was purified by immunogen affinity chromatography.
Molecular Weight	Predicted: 71 kD; Observed: 72; 100 kD
Form/Buffer	Liquid in 0.42% Potassium phosphate, 0.87% Sodium chloride, pH 7.3, 30% glycerol, and 0.01% sodium azide.
Alternative Names	T-cell differentiation antigen CD6; T12; TP120; CD6
Gene Symbol	CD6
Entrez Gene	923(Human); 12511(Mouse)
SwissProt	P30203(Human); Q61003(Mouse)

\*AREX continuously optimizes our products. Webpage content may not reflect the latest updates. For inquiries, please contact [info@arexbio.com](mailto:info@arexbio.com) or your local distributor.

\*Clone Number, Reactivity, Source/Host and Clonality can be found in the product name and Key Features section above.

**DATASHEET****CD6 Rabbit Polyclonal Antibody**

CAT. NO. APA10814

**DATA**

Western blot analysis of CD6 expression in Jurkat (A), MCF7 (B), H9C2 (C), AML12 (D) whole cell lysates. (Predicted band size: 71 kD; Observed band size: 72; 100 kD)

**STORAGE**

Store at 4°C short term. For long term storage, store at -20°C, avoiding freeze/thaw cycles.

**NOTE**

For Research Use Only. Not for diagnostic, therapeutics, prophylactic or in vivo use.