

DATASHEET

KPC2 Rabbit Polyclonal Antibody

CAT. NO. APA10820

KEY FEATURES

Target	KPC2	Source / Host	Rabbit
Reactivity	Human, Mouse, Rat	Clonality	Polyclonal
Applications	WB, IHC	Conjugation	Unconjugated
Form / Buffer	Liquid in 0.42% Potassium phosphate, 0.87% Sodium chloride, pH 7.3, 30% glycerol, and 0.01% sodium azide.		Storage at -20°C

BACKGROUND

Non-catalytic component of the KPC complex, a E3 ubiquitin-protein ligase complex that mediates polyubiquitination of target proteins, such as CDKN1B and NFKB1 . The KPC complex catalyzes polyubiquitination and proteasome-mediated degradation of CDKN1B during G1 phase of the cell cycle . The KPC complex also acts as a key regulator of the NF-kappa-B signaling by promoting maturation of the NFKB1 component of NF-kappa-B by catalyzing ubiquitination of the NFKB1 p105 precursor . Within the KPC complex, UBAC1 acts as an adapter that promotes the transfer of target proteins that have been polyubiquitinated by RNF123/KPC1 to the 26S proteasome .

APPLICATION

To ensure optimal assay performance, AREX recommends conducting reagent titration tailored to each testing system for optimal detection results.

WB	1:500 - 1:1000
IHC	1:50 - 1:100

*Results are sample-specific. Please refer to your local assay conditions and test parameters for reference.

PRODUCT OVERVIEW

Description	Rabbit polyclonal antibody to KPC2
Specificity	Recognizes endogenous levels of KPC2 protein.
Antibody Type	Primary antibody
Immunogen	KLH-conjugated synthetic peptide encompassing a sequence within the center region of human KPC2. The exact sequence is proprietary.
Purification	The antibody was purified by immunogen affinity chromatography.
Molecular Weight	Predicted: 45 kD; Observed: 51; 40 kD
Form/Buffer	Liquid in 0.42% Potassium phosphate, 0.87% Sodium chloride, pH 7.3, 30% glycerol, and 0.01% sodium azide.
Alternative Names	GBDR1; KPC2; UBADC1; Ubiquitin-associated domain-containing protein 1; UBA domain-containing protein 1; E3 ubiquitin-protein ligase subunit KPC2; Glioblastoma cell differentiation-related protein 1; Kip1 ubiquitination-promoting complex protein 2
Gene Symbol	UBAC1
Entrez Gene	10422(Human); 98766(Mouse); 362087(Rat)
SwissProt	Q9BSL1(Human); Q8VDI7(Mouse); Q5XIR9(Rat)

*AREX continuously optimizes our products. Webpage content may not reflect the latest updates. For inquiries, please contact info@arexbio.com or your local distributor.

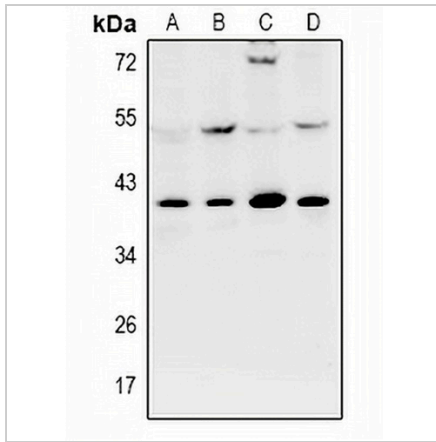
*Clone Number, Reactivity, Source/Host and Clonality can be found in the product name and Key Features section above.

DATASHEET

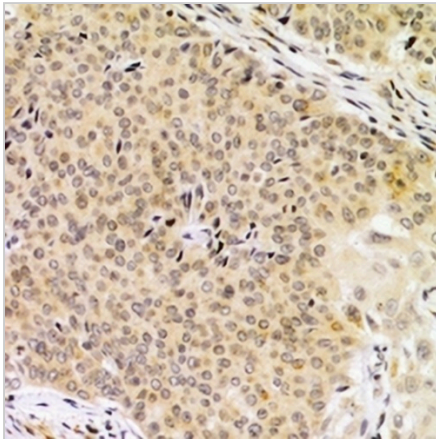
KPC2 Rabbit Polyclonal Antibody

CAT. NO. APA10820

DATA



Western blot analysis of KPC2 expression in MCF7 (A), HCT116 (B), PC12 (C), AML12 (D) whole cell lysates. (Predicted band size: 45 kD; Observed band size: 51; 40 kD)



Immunohistochemical analysis of KPC2 staining in human breast cancer formalin fixed paraffin embedded tissue section. The section was pre-treated using heat mediated antigen retrieval with sodium citrate buffer (pH 6.0). The section was then incubated with the antibody at room temperature and detected using an HRP conjugated compact polymer system. DAB was used as the chromogen. The section was then counterstained with haematoxylin and mounted with DPX.

STORAGE

Store at 4°C short term. For long term storage, store at -20°C, avoiding freeze/thaw cycles.

NOTE

For Research Use Only. Not for diagnostic, therapeutics, prophylactic or in vivo use.