

DATASHEET

CACNA2D4 Rabbit Polyclonal Antibody

CAT. NO. APA10823

KEY FEATURES

Target	CACNA2D4	Source / Host	Rabbit
Reactivity	Human, Mouse, Rat	Clonality	Polyclonal
Applications	WB	Conjugation	Unconjugated
Form / Buffer	Liquid in 0.42% Potassium phosphate, 0.87% Sodium chloride, pH 7.3, 30% glycerol, and 0.01% sodium azide.		Storage at -20°C

BACKGROUND

The alpha-2/delta subunit of voltage-dependent calcium channels regulates calcium current density and activation/inactivation kinetics of the calcium channel.

APPLICATION

To ensure optimal assay performance, AREX recommends conducting reagent titration tailored to each testing system for optimal detection results.

WB	1:500 - 1:1000
----	----------------

*Results are sample-specific. Please refer to your local assay conditions and test parameters for reference.

PRODUCT OVERVIEW

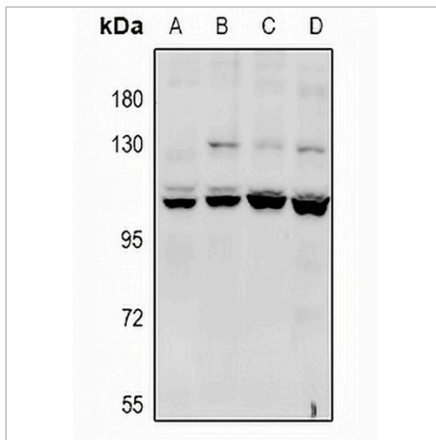
Description	Rabbit polyclonal antibody to CACNA2D4
Specificity	Recognizes endogenous levels of CACNA2D4 protein.
Antibody Type	Primary antibody
Immunogen	KLH-conjugated synthetic peptide encompassing a sequence within the center region of human CACNA2D4. The exact sequence is proprietary.
Purification	The antibody was purified by immunogen affinity chromatography.
Molecular Weight	Predicted: 127 kD; Observed: 128; 109 kD
Form/Buffer	Liquid in 0.42% Potassium phosphate, 0.87% Sodium chloride, pH 7.3, 30% glycerol, and 0.01% sodium azide.
Alternative Names	Voltage-dependent calcium channel subunit alpha-2/delta-4; Voltage-gated calcium channel subunit alpha-2/delta-4
Gene Symbol	CACNA2D4
Entrez Gene	93589(Human); 319734(Mouse)
SwissProt	Q7Z3S7(Human); Q5RJF7(Mouse)

*AREX continuously optimizes our products. Webpage content may not reflect the latest updates. For inquiries, please contact info@arexbio.com or your local distributor.

*Clone Number, Reactivity, Source/Host and Clonality can be found in the product name and Key Features section above.

DATASHEET**CACNA2D4 Rabbit Polyclonal Antibody**

CAT. NO. APA10823

DATA

Western blot analysis of CACNA2D4 expression in HCT116 (A), HepG2 (B), AML12 (C), PC12 (D) whole cell lysates. (Predicted band size: 127 kDa; Observed band size: 128; 109 kDa)

STORAGE

Store at 4°C short term. For long term storage, store at -20°C, avoiding freeze/thaw cycles.

NOTE

For Research Use Only. Not for diagnostic, therapeutics, prophylactic or in vivo use.