

DATASHEET

ZZZ3 Rabbit Polyclonal Antibody

CAT. NO. APA10825

KEY FEATURES

Target	ZZZ3	Source / Host	Rabbit
Reactivity	Human, Mouse, Rat	Clonality	Polyclonal
Applications	WB	Conjugation	Unconjugated
Form / Buffer	Liquid in 0.42% Potassium phosphate, 0.87% Sodium chloride, pH 7.3, 30% glycerol, and 0.01% sodium azide.		Storage at -20°C

BACKGROUND

Histone H3 reader that is required for the ATAC complex-mediated maintenance of histone acetylation and gene activation . Component of the ATAC complex, a complex with histone acetyltransferase activity on histones H3 and H4 .

APPLICATION

To ensure optimal assay performance, AREX recommends conducting reagent titration tailored to each testing system for optimal detection results.

WB	1:500 - 1:1000
----	----------------

*Results are sample-specific. Please refer to your local assay conditions and test parameters for reference.

PRODUCT OVERVIEW

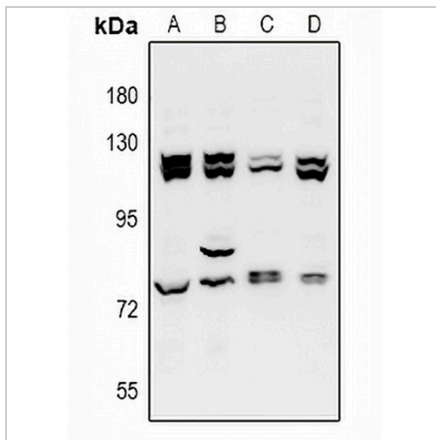
Description	Rabbit polyclonal antibody to ZZZ3
Specificity	Recognizes endogenous levels of ZZZ3 protein.
Antibody Type	Primary antibody
Immunogen	KLH-conjugated synthetic peptide encompassing a sequence within the center region of human ZZZ3. The exact sequence is proprietary.
Purification	The antibody was purified by immunogen affinity chromatography.
Molecular Weight	Predicted: 102 kD; Observed: 120; 76 kD
Form/Buffer	Liquid in 0.42% Potassium phosphate, 0.87% Sodium chloride, pH 7.3, 30% glycerol, and 0.01% sodium azide.
Alternative Names	ZZ-type zinc finger-containing protein 3
Gene Symbol	ZZZ3
Entrez Gene	26009(Human); 108946(Mouse)
SwissProt	Q8IYH5(Human); Q6KAQ7(Mouse)

*AREX continuously optimizes our products. Webpage content may not reflect the latest updates. For inquiries, please contact info@arexbio.com or your local distributor.

*Clone Number, Reactivity, Source/Host and Clonality can be found in the product name and Key Features section above.

DATASHEET**ZZZ3 Rabbit Polyclonal Antibody**

CAT. NO. APA10825

DATA

Western blot analysis of ZZZ3 expression in A549 (A), HCT116 (B), H9C2 (C), AML12 (D) whole cell lysates. (Predicted band size: 102 kD; Observed band size: 120; 76 kD)

STORAGE

Store at 4°C short term. For long term storage, store at -20°C, avoiding freeze/thaw cycles.

NOTE

For Research Use Only. Not for diagnostic, therapeutics, prophylactic or in vivo use.