

DATASHEET

ZIP1 Rabbit Polyclonal Antibody

CAT. NO. APA10827

KEY FEATURES

Target	ZIP1	Source / Host	Rabbit
Reactivity	Human, Mouse, Rat	Clonality	Polyclonal
Applications	WB	Conjugation	Unconjugated
Form / Buffer	Liquid in 0.42% Potassium phosphate, 0.87% Sodium chloride, pH 7.3, 30% glycerol, and 0.01% sodium azide.		Storage at-20°C

BACKGROUND

Transporter for the divalent cation Zn(2+). Mediates the influx of Zn(2+) into cells from extracellular space . Mediates the influx of Zn(2+) into cells from extracellular space . Functions as the major importer of zinc from circulating blood plasma into prostate cells .

APPLICATION

To ensure optimal assay performance, AREX recommends conducting reagent titration tailored to each testing system for optimal detection results.

WB	1:500 - 1:1000
----	----------------

*Results are sample-specific. Please refer to your local assay conditions and test parameters for reference.

PRODUCT OVERVIEW

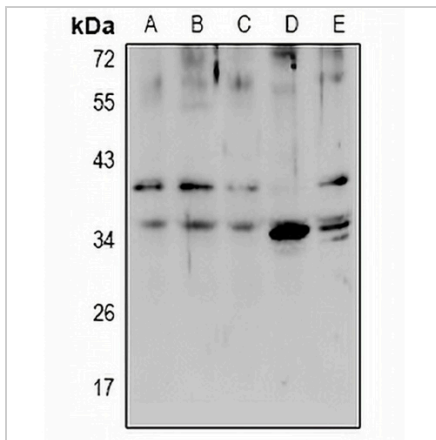
Description	Rabbit polyclonal antibody to ZIP1
Specificity	Recognizes endogenous levels of ZIP1 protein.
Antibody Type	Primary antibody
Immunogen	KLH-conjugated synthetic peptide encompassing a sequence within the center region of human ZIP1. The exact sequence is proprietary.
Purification	The antibody was purified by immunogen affinity chromatography.
Molecular Weight	Predicted: 34 kD; Observed: 40 kD
Form/Buffer	Liquid in 0.42% Potassium phosphate, 0.87% Sodium chloride, pH 7.3, 30% glycerol, and 0.01% sodium azide.
Alternative Names	IRT1; ZIP1; ZIRTL; Zinc transporter ZIP1; Solute carrier family 39 member 1; Zinc-iron-regulated transporter-like; Zrt- and Irt-like protein 1; ZIP-1; hZIP1
Gene Symbol	SLC39A1
Entrez Gene	27173(Human); 30791(Mouse)
SwissProt	Q9NY26(Human); Q9QZ03(Mouse)

*AREX continuously optimizes our products. Webpage content may not reflect the latest updates. For inquiries, please contact info@arexbio.com or your local distributor.

*Clone Number, Reactivity, Source/Host and Clonality can be found in the product name and Key Features section above.

DATASHEET**ZIP1 Rabbit Polyclonal Antibody**

CAT. NO. APA10827

DATA

Western blot analysis of ZIP1 expression in H1792 (A), LO2 (B), HCT116 (C), PC12 (D), AML12 (E) whole cell lysates. (Predicted band size: 34 kD; Observed band size: 40 kD)

STORAGE

Store at 4°C short term. For long term storage, store at -20°C, avoiding freeze/thaw cycles.

NOTE

For Research Use Only. Not for diagnostic, therapeutics, prophylactic or in vivo use.