

DATASHEET

N4WBP5 Rabbit Polyclonal Antibody

CAT. NO. APA10830

KEY FEATURES

| | | | |
|---------------|---|---------------|---------------------|
| Target | N4WBP5 | Source / Host | Rabbit |
| Reactivity | Human, Mouse, Rat | Clonality | Polyclonal |
| Applications | WB | Conjugation | Unconjugated |
| Form / Buffer | Liquid in 0.42% Potassium phosphate, 0.87% Sodium chloride, pH 7.3, 30% glycerol, and 0.01% sodium azide. | | Storage at -20°C |

BACKGROUND

Activates HECT domain-containing E3 ubiquitin-protein ligases, including NEDD4 and ITCH, and consequently modulates the stability of their targets. As a result, controls many cellular processes. Prevents chronic T-helper cell-mediated inflammation by activating ITCH and thus controlling JUNB degradation . Promotes pancreatic beta cell death through degradation of JUNB and inhibition of the unfolded protein response, leading to reduction of insulin secretion . Restricts the production of pro-inflammatory cytokines in effector Th17 T-cells by promoting ITCH-mediated ubiquitination and degradation of RORC . Together with NDFIP2, limits the cytokine signaling and expansion of effector Th2 T-cells by promoting degradation of JAK1, probably by ITCH- and NEDD4L-mediated ubiquitination .

APPLICATION

To ensure optimal assay performance, AREX recommends conducting reagent titration tailored to each testing system for optimal detection results.

| | |
|----|----------------|
| WB | 1:500 - 1:1000 |
|----|----------------|

*Results are sample-specific. Please refer to your local assay conditions and test parameters for reference.

PRODUCT OVERVIEW

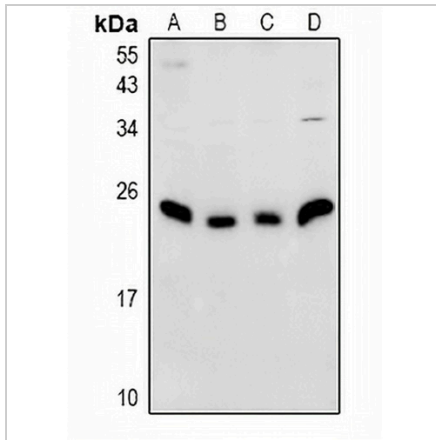
| | |
|-------------------|--|
| Description | Rabbit polyclonal antibody to N4WBP5 |
| Specificity | Recognizes endogenous levels of N4WBP5 protein. |
| Antibody Type | Primary antibody |
| Immunogen | KLH-conjugated synthetic peptide encompassing a sequence within the C-term region of human N4WBP5. The exact sequence is proprietary. |
| Purification | The antibody was purified by immunogen affinity chromatography. |
| Molecular Weight | Predicted: 24 kD; Observed: 25 kD |
| Form/Buffer | Liquid in 0.42% Potassium phosphate, 0.87% Sodium chloride, pH 7.3, 30% glycerol, and 0.01% sodium azide. |
| Alternative Names | N4WBP5; NEDD4 family-interacting protein 1; Breast cancer-associated protein SGA-1M; NEDD4 WW domain-binding protein 5; Putative MAPK-activating protein PM13; Putative NF-kappa-B-activating protein 164; Putative NFKB and MAPK-activating protein |
| Gene Symbol | NDFIP1 |
| Entrez Gene | 80762(Human); 65113(Mouse); 291609(Rat) |
| SwissProt | Q9BT67(Human); Q8R0W6(Mouse); Q5U2S1(Rat) |

*AREX continuously optimizes our products. Webpage content may not reflect the latest updates. For inquiries, please contact info@arexbio.com or your local distributor.

*Clone Number, Reactivity, Source/Host and Clonality can be found in the product name and Key Features section above.

DATASHEET**N4WBP5 Rabbit Polyclonal Antibody**

CAT. NO. APA10830

DATA

Western blot analysis of N4WBP5 expression in C6 (A), AML12 (B), HepG2 (C), HEK293T (D) whole cell lysates. (Predicted band size: 24 kD; Observed band size: 25 kD)

STORAGE

Store at 4°C short term. For long term storage, store at -20°C, avoiding freeze/thaw cycles.

NOTE

For Research Use Only. Not for diagnostic, therapeutics, prophylactic or in vivo use.