

DATASHEET

GPR173 Rabbit Polyclonal Antibody

CAT. NO. APA10873

KEY FEATURES

Target	GPR173	Source / Host	Rabbit
Reactivity	Human, Mouse, Rat	Clonality	Polyclonal
Applications	WB, IF/ICC	Conjugation	Unconjugated
Form / Buffer	Liquid in 0.42% Potassium phosphate, 0.87% Sodium chloride, pH 7.3, 30% glycerol, and 0.01% sodium azide.		Storage at -20°C

BACKGROUND

Is a receptor for the SMIM20 derived peptides Phoenixin-14 and Phoenixin-20 . It mediates the Phoenixin-14 and Phoenixin-20 augmentation of gonadotropin-releasing hormone (GNRH) signaling in the hypothalamus and pituitary gland . In the ovary, it mediates the effects of Phoenixin-14 and Phoenixin-20 induced granulosa cell proliferation during follicular growth signaling in the hypothalamus and pituitary gland . In the ovary, it mediates the effects of Phoenixin-14 and Phoenixin-20 induced granulosa cell proliferation during follicular growth .

APPLICATION

To ensure optimal assay performance, AREX recommends conducting reagent titration tailored to each testing system for optimal detection results.

WB	1:500 - 1:1000
IF/ICC	1:100 - 1:500

*Results are sample-specific. Please refer to your local assay conditions and test parameters for reference.

PRODUCT OVERVIEW

Description	Rabbit polyclonal antibody to GPR173
Specificity	Recognizes endogenous levels of GPR173 protein.
Antibody Type	Primary antibody
Immunogen	KLH-conjugated synthetic peptide encompassing a sequence within the center region of human GPR173. The exact sequence is proprietary.
Purification	The antibody was purified by immunogen affinity chromatography.
Molecular Weight	Predicted: 41 kD; Observed: 41 kD
Form/Buffer	Liquid in 0.42% Potassium phosphate, 0.87% Sodium chloride, pH 7.3, 30% glycerol, and 0.01% sodium azide.
Alternative Names	SREB3; Probable G-protein coupled receptor 173; Super conserved receptor expressed in brain 3
Gene Symbol	GPR173
Entrez Gene	54328(Human); 70771(Mouse); 64021(Rat)
SwissProt	Q9NS66(Human); Q6PI62(Mouse); Q9JJH2(Rat)

*AREX continuously optimizes our products. Webpage content may not reflect the latest updates. For inquiries, please contact info@arexbio.com or your local distributor.

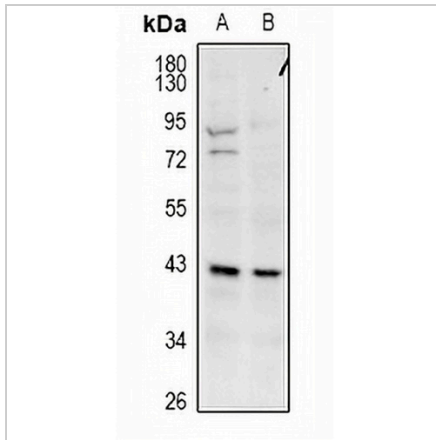
*Clone Number, Reactivity, Source/Host and Clonality can be found in the product name and Key Features section above.

DATASHEET

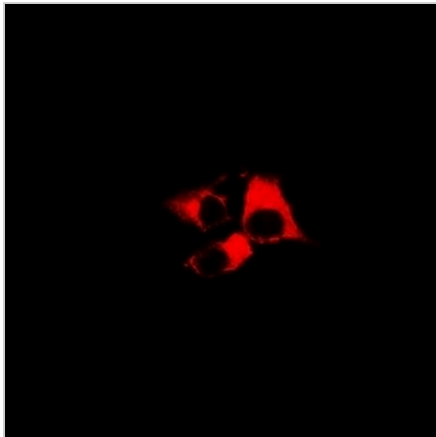
GPR173 Rabbit Polyclonal Antibody

CAT. NO. APA10873

DATA



Western blot analysis of GPR173 expression in CT26 (A), C6 (B) whole cell lysates. (Predicted band size: 41 kD; Observed band size: 41 kD)



Immunofluorescent analysis of GPR173 staining in LOVO cells. Formalin-fixed cells were permeabilized with 0.1% Triton X-100 in TBS for 5-10 minutes and blocked with 3% BSA-PBS for 30 minutes at room temperature. Cells were probed with the primary antibody in 3% BSA-PBS and incubated overnight at 4 °C in a humidified chamber. Cells were washed with PBST and incubated with Alexa Fluor 647-conjugated secondary antibody (red) in PBS at room temperature in the dark.

STORAGE

Store at 4°C short term. For long term storage, store at -20°C, avoiding freeze/thaw cycles.

NOTE

For Research Use Only. Not for diagnostic, therapeutics, prophylactic or in vivo use.