

DATASHEET

GPR174 Rabbit Polyclonal Antibody

CAT. NO. APA10874

KEY FEATURES

Target	GPR174	Source / Host	Rabbit
Reactivity	Human, Mouse, Rat	Clonality	Polyclonal
Applications	WB, IF/ICC	Conjugation	Unconjugated
Form / Buffer	Liquid in 0.42% Potassium phosphate, 0.87% Sodium chloride, pH 7.3, 30% glycerol, and 0.01% sodium azide.		Storage at-20°C

BACKGROUND

G-protein-coupled receptor of lysophosphatidylserine (LysoPS) that plays different roles in immune response that plays different roles in immune response . Plays a negative role in regulatory T-cell accumulation and homeostasis. Under inflammatory conditions where LysoPS production increases, contributes to the down-regulation of regulatory T-cell activity to favor effector response. Mediates the suppression of IL-2 production in activated T-lymphocytes leading to inhibition of growth, proliferation and differentiation of T-cells. Mechanistically, acts via G(s)-containing heterotrimeric G proteins to trigger elevated cyclic AMP levels and protein kinase A/PKA activity, which may in turn act to antagonize proximal TCR signaling.

APPLICATION

To ensure optimal assay performance, AREX recommends conducting reagent titration tailored to each testing system for optimal detection results.

WB	1:500 - 1:1000
IF/ICC	1:100 - 1:500

*Results are sample-specific. Please refer to your local assay conditions and test parameters for reference.

PRODUCT OVERVIEW

Description	Rabbit polyclonal antibody to GPR174
Specificity	Recognizes endogenous levels of GPR174 protein.
Antibody Type	Primary antibody
Immunogen	KLH-conjugated synthetic peptide encompassing a sequence within the center region of human GPR174. The exact sequence is proprietary.
Purification	The antibody was purified by immunogen affinity chromatography.
Molecular Weight	Predicted: 38 kD; Observed: 39 kD
Form/Buffer	Liquid in 0.42% Potassium phosphate, 0.87% Sodium chloride, pH 7.3, 30% glycerol, and 0.01% sodium azide.
Alternative Names	Probable G-protein coupled receptor 174
Gene Symbol	GPR174
Entrez Gene	84636(Human); 213439(Mouse)
SwissProt	Q9BXC1(Human); Q3U507(Mouse)

*AREX continuously optimizes our products. Webpage content may not reflect the latest updates. For inquiries, please contact info@arexbio.com or your local distributor.

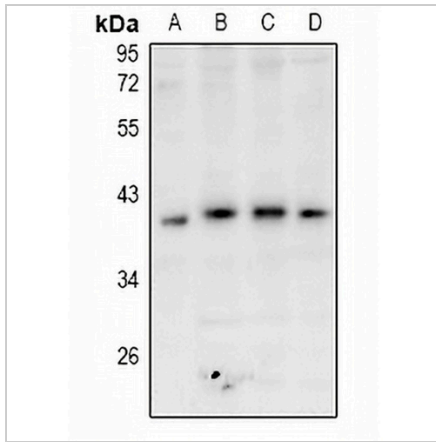
*Clone Number, Reactivity, Source/Host and Clonality can be found in the product name and Key Features section above.

DATASHEET

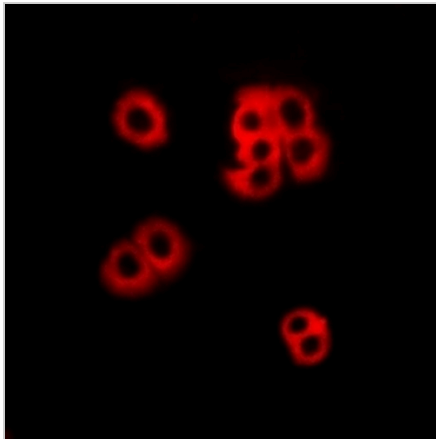
GPR174 Rabbit Polyclonal Antibody

CAT. NO. APA10874

DATA



Western blot analysis of GPR174 expression in BV2 (A), PC12 (B), A549 (C), HeLa (D) whole cell lysates. (Predicted band size: 38 kD; Observed band size: 39 kD)



Immunofluorescent analysis of GPR174 staining in LOVO cells. Formalin-fixed cells were permeabilized with 0.1% Triton X-100 in TBS for 5-10 minutes and blocked with 3% BSA-PBS for 30 minutes at room temperature. Cells were probed with the primary antibody in 3% BSA-PBS and incubated overnight at 4 °C in a humidified chamber. Cells were washed with PBST and incubated with Alexa Fluor 647-conjugated secondary antibody (red) in PBS at room temperature in the dark.

STORAGE

Store at 4°C short term. For long term storage, store at -20°C, avoiding freeze/thaw cycles.

NOTE

For Research Use Only. Not for diagnostic, therapeutics, prophylactic or in vivo use.