

DATASHEET

GPRC6A Rabbit Polyclonal Antibody

CAT. NO. APA10876

KEY FEATURES

Target	GPRC6A	Source / Host	Rabbit
Reactivity	Human, Mouse, Rat	Clonality	Polyclonal
Applications	WB, IF/ICC	Conjugation	Unconjugated
Form / Buffer	Liquid in 0.42% Potassium phosphate, 0.87% Sodium chloride, pH 7.3, 30% glycerol, and 0.01% sodium azide.		Storage at -20°C

BACKGROUND

Receptor activated by multiple ligands, including osteocalcin (BGLAP), basic amino acids, and various cations, basic amino acids, and various cations. Activated by amino acids with a preference for basic amino acids such as L-Lys, L-Arg and L-ornithine but also by small and polar amino acids. The L-alpha amino acids response is augmented by divalent cations Ca(2+) and Mg(2+). Seems to act through a G(q)/G(11) and G(i)-coupled pathway. Regulates testosterone production by acting as a ligand for uncarboxylated osteocalcin hormone: osteocalcin-binding at the surface of Leydig cells initiates a signaling response that promotes the expression of enzymes required for testosterone synthesis in a CREB-dependent manner. Mediates the non-genomic effects of androgens in multiple tissue.

APPLICATION

To ensure optimal assay performance, AREX recommends conducting reagent titration tailored to each testing system for optimal detection results.

WB	1:500 - 1:1000
IF/ICC	1:100 - 1:500

*Results are sample-specific. Please refer to your local assay conditions and test parameters for reference.

PRODUCT OVERVIEW

Description	Rabbit polyclonal antibody to GPRC6A
Specificity	Recognizes endogenous levels of GPRC6A protein.
Antibody Type	Primary antibody
Immunogen	KLH-conjugated synthetic peptide encompassing a sequence within the center region of human GPRC6A. The exact sequence is proprietary.
Purification	The antibody was purified by immunogen affinity chromatography.
Molecular Weight	Predicted: 104 kD; Observed: 120 kD
Form/Buffer	Liquid in 0.42% Potassium phosphate, 0.87% Sodium chloride, pH 7.3, 30% glycerol, and 0.01% sodium azide.
Alternative Names	G-protein coupled receptor family C group 6 member A; hGPRC6A; G-protein coupled receptor GPCR33; hGPCR33
Gene Symbol	GPRC6A
Entrez Gene	222545(Human); 210198(Mouse); 294394(Rat)
SwissProt	Q5T6X5(Human); Q8K4Z6(Mouse); Q70VB1(Rat)

*AREX continuously optimizes our products. Webpage content may not reflect the latest updates. For inquiries, please contact info@arexbio.com or your local distributor.

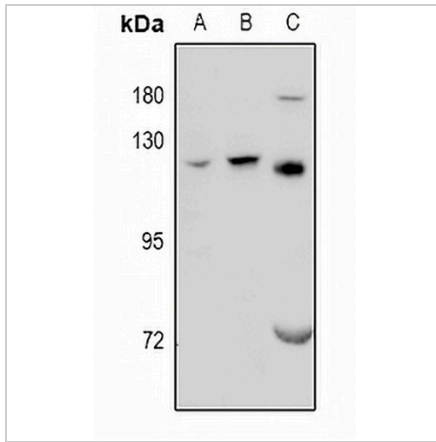
*Clone Number, Reactivity, Source/Host and Clonality can be found in the product name and Key Features section above.

DATASHEET

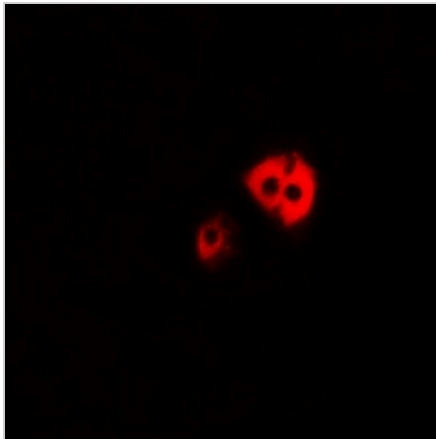
GPRC6A Rabbit Polyclonal Antibody

CAT. NO. APA10876

DATA



Western blot analysis of GPRC6A expression in HEK293T (A), LO2 (B), rat testis (C) whole cell lysates. (Predicted band size: 104 kD; Observed band size: 120 kD)



Immunofluorescent analysis of GPRC6A staining in MCF7 cells. Formalin-fixed cells were permeabilized with 0.1% Triton X-100 in TBS for 5-10 minutes and blocked with 3% BSA-PBS for 30 minutes at room temperature. Cells were probed with the primary antibody in 3% BSA-PBS and incubated overnight at 4 °C in a humidified chamber. Cells were washed with PBST and incubated with Alexa Fluor 647-conjugated secondary antibody (red) in PBS at room temperature in the dark.

STORAGE

Store at 4°C short term. For long term storage, store at -20°C, avoiding freeze/thaw cycles.

NOTE

For Research Use Only. Not for diagnostic, therapeutics, prophylactic or in vivo use.