

DATASHEET
MRGX1 Rabbit Polyclonal Antibody
CAT. NO. APA10880
KEY FEATURES

Target	MRGX1	Source / Host	Rabbit
Reactivity	Human	Clonality	Polyclonal
Applications	WB, IF/ICC	Conjugation	Unconjugated
Form / Buffer	Liquid in 0.42% Potassium phosphate, 0.87% Sodium chloride, pH 7.3, 30% glycerol, and 0.01% sodium azide.		Storage at-20°C

BACKGROUND

G protein-coupled receptor specifically expressed in sensory neurons of dorsal root ganglion, and which is involved in itch perception and pain transmission . Specifically activated by a variety of enkephalin (PENK) neuropeptides, such as BAM22 and BAM8-22, which induce itch in a histamine-independent manner . Activated by some tick defensins, such as I.persulcatus Def1 and I.ricinus Def2, evoking itch . Also activated by conotoxin CNF-Tx2, inducing itch sensation . Activated by the antimalarial drug chloroquine; however, activation requires concentrations that exceed the chloroquine concentrations observed in plasma of patients undergoing chloroquine treatment . Also activated following cleavage by the dust mite cysteine protease Der p1 .

APPLICATION

To ensure optimal assay performance, AREX recommends conducting reagent titration tailored to each testing system for optimal detection results.

WB	1:500 - 1:1000
IF/ICC	1:100 - 1:500

*Results are sample-specific. Please refer to your local assay conditions and test parameters for reference.

PRODUCT OVERVIEW

Description	Rabbit polyclonal antibody to MRGX1
Specificity	Recognizes endogenous levels of MRGX1 protein.
Antibody Type	Primary antibody
Immunogen	KLH-conjugated synthetic peptide encompassing a sequence within the C-term region of human MRGX1. The exact sequence is proprietary.
Purification	The antibody was purified by immunogen affinity chromatography.
Molecular Weight	Predicted: 36 kD; Observed: 36 kD
Form/Buffer	Liquid in 0.42% Potassium phosphate, 0.87% Sodium chloride, pH 7.3, 30% glycerol, and 0.01% sodium azide.
Alternative Names	MRGX1; SNSR3; SNSR4; Mas-related G-protein coupled receptor member X1; Sensory neuron-specific G-protein coupled receptor 3/4
Gene Symbol	MRGPRX1
Entrez Gene	259249(Human)
SwissProt	Q96LB2(Human)

*AREX continuously optimizes our products. Webpage content may not reflect the latest updates. For inquiries, please contact info@arex.bio or your local distributor.

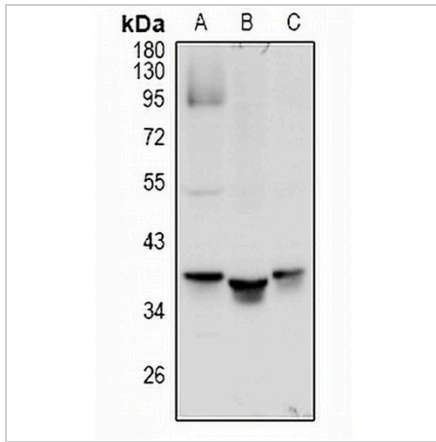
*Clone Number, Reactivity, Source/Host and Clonality can be found in the product name and Key Features section above.

DATASHEET

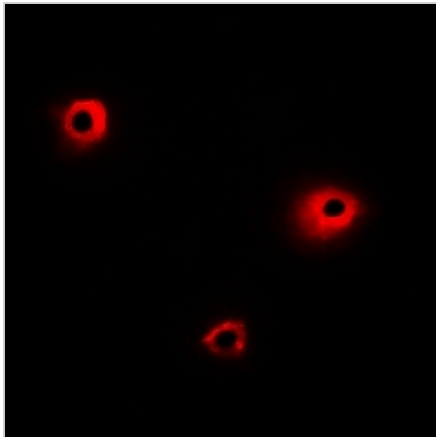
MRGX1 Rabbit Polyclonal Antibody

CAT. NO. APA10880

DATA



Western blot analysis of MRGX1 expression in U87MG (A) whole cell lysates. (Predicted band size: 36 kD; Observed band size: 36 kD)



Immunofluorescent analysis of MRGX1 staining in HepG2 cells. Formalin-fixed cells were permeabilized with 0.1% Triton X-100 in TBS for 5-10 minutes and blocked with 3% BSA-PBS for 30 minutes at room temperature. Cells were probed with the primary antibody in 3% BSA-PBS and incubated overnight at 4 °C in a humidified chamber. Cells were washed with PBST and incubated with Alexa Fluor 647-conjugated secondary antibody (red) in PBS at room temperature in the dark.

STORAGE

Store at 4°C short term. For long term storage, store at -20°C, avoiding freeze/thaw cycles.

NOTE

For Research Use Only. Not for diagnostic, therapeutics, prophylactic or in vivo use.