

DATASHEET

CD91 (Phospho-S4520) Rabbit Polyclonal Antibody

CAT. NO. APA10940

KEY FEATURES

Target	CD91 (Phospho-S4520)	Source / Host	Rabbit
Reactivity	Human, Mouse, Rat	Clonality	Polyclonal
Applications	WB, IHC	Conjugation	Unconjugated
Form / Buffer	Liquid in 0.42% Potassium phosphate, 0.87% Sodium chloride, pH 7.3, 30% glycerol, and 0.01% sodium azide.		Storage at-20°C

BACKGROUND

Endocytic receptor involved in endocytosis and in phagocytosis of apoptotic cells . Required for early embryonic development . Involved in cellular lipid homeostasis. Involved in the plasma clearance of chylomicron remnants and activated LRPAP1 (alpha 2-macroglobulin), as well as the local metabolism of complexes between plasminogen activators and their endogenous inhibitors. Acts as an LRPAP1 alpha-2-macroglobulin receptor . Acts as TAU/MAPT receptor and controls the endocytosis of TAU/MAPT as well as its subsequent spread . May modulate cellular events, such as APP metabolism, kinase-dependent intracellular signaling, neuronal calcium signaling as well as neurotransmission . Also acts as a receptor for IGFBP3 to mediate cell growth inhibition .

APPLICATION

To ensure optimal assay performance, AREX recommends conducting reagent titration tailored to each testing system for optimal detection results.

WB	1:500 - 1:1000
IHC	1:50 - 1:100

*Results are sample-specific. Please refer to your local assay conditions and test parameters for reference.

PRODUCT OVERVIEW

Description	Rabbit polyclonal antibody to CD91 (Phospho-S4520)
Specificity	Recognizes endogenous levels of CD91 protein only when phosphorylated at S4520.
Antibody Type	Primary antibody
Immunogen	KLH-conjugated synthetic phosphopeptide corresponding to residues surrounding S4520 of human CD91 protein. The exact sequence is proprietary.
Purification	The antibody was purified by immunogen affinity chromatography.
Molecular Weight	Predicted: 504 kD; Observed: 85 kD
Form/Buffer	Liquid in 0.42% Potassium phosphate, 0.87% Sodium chloride, pH 7.3, 30% glycerol, and 0.01% sodium azide.
Alternative Names	A2MR; APR; Prolow-density lipoprotein receptor-related protein 1; LRP-1; Alpha-2-macroglobulin receptor; A2MR; Apolipoprotein E receptor; APOER; CD91
Gene Symbol	LRP1
Entrez Gene	4035(Human); 16971(Mouse)
SwissProt	Q07954(Human); Q91ZX7(Mouse)

*AREX continuously optimizes our products. Webpage content may not reflect the latest updates. For inquiries, please contact info@arexbio.com or your local distributor.

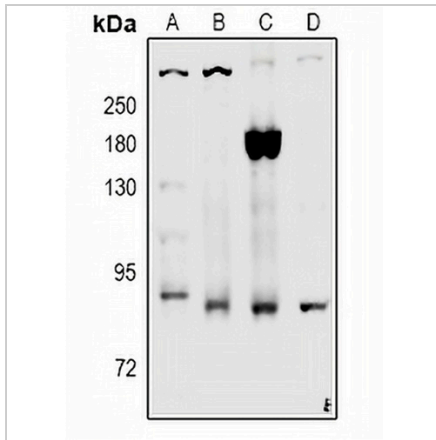
*Clone Number, Reactivity, Source/Host and Clonality can be found in the product name and Key Features section above.

DATASHEET

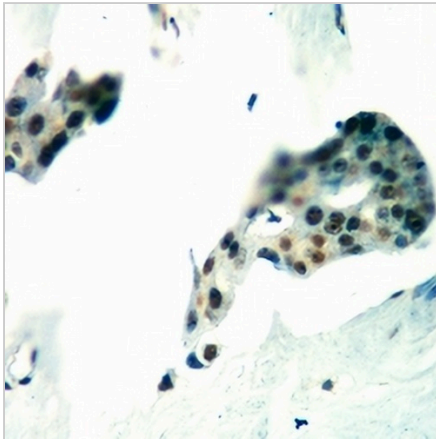
CD91 (Phospho-S4520) Rabbit Polyclonal Antibody

CAT. NO. APA10940

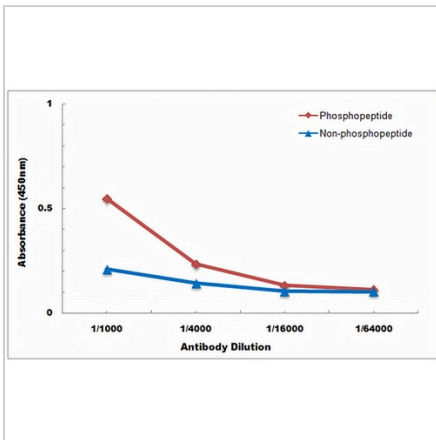
DATA



Western blot analysis of CD91 (Phospho-S4520) expression in rat brain (A), C6 (B), LO2 (C), HEK293T (D) whole cell lysates. (Predicted band size: 504 kD; Observed band size: 85 kD)



Immunohistochemical analysis of CD91 (Phospho-S4520) staining in human breast cancer formalin fixed paraffin embedded tissue section. The section was pre-treated using heat mediated antigen retrieval with sodium citrate buffer (pH 6.0). The section was then incubated with the antibody at room temperature and detected using an HRP conjugated compact polymer system. DAB was used as the chromogen. The section was then counterstained with haematoxylin and mounted with DPX.



Direct ELISA antibody dose-response curve using Anti-CD91 (Phospho-S4520) Antibody. Antigen (Phosphopeptide and non-phosphopeptide) concentration is 5 ug/ml. Goat Anti-Rabbit IgG (H&L) - HRP was used as the secondary antibody, and signal was developed by TMB substrate.

STORAGE

Store at 4°C short term. For long term storage, store at -20°C, avoiding freeze/thaw cycles.

NOTE

For Research Use Only. Not for diagnostic, therapeutics, prophylactic or in vivo use.