

**DATASHEET**

**Claudin 4 (Phospho-Y208) Rabbit Polyclonal Antibody**

CAT. NO. APA10943

**KEY FEATURES**

Target	Claudin 4 (Phospho-Y208)	Source / Host	Rabbit
Reactivity	Human, Mouse, Rat	Clonality	Polyclonal
Applications	WB, IHC	Conjugation	Unconjugated
Form / Buffer	Liquid in 0.42% Potassium phosphate, 0.87% Sodium chloride, pH 7.3, 30% glycerol, and 0.01% sodium azide.	Storage	at-20°C

**BACKGROUND**

Can associate with other claudins to regulate tight junction structural and functional strand dynamics . May coassemble with CLDN8 into tight junction strands containing anion-selective channels that convey paracellular chloride permeability in renal collecting ducts . May integrate into CLDN3 strands to modulate localized tight junction barrier properties . May disrupt strand assembly of channel-forming CLDN2 and CLDN15 and inhibit cation conductance . Cannot form tight junction strands on its own .

**APPLICATION**

To ensure optimal assay performance, AREX recommends conducting reagent titration tailored to each testing system for optimal detection results.

WB	1:500 - 1:1000
IHC	1:50 - 1:100

\*Results are sample-specific. Please refer to your local assay conditions and test parameters for reference.

**PRODUCT OVERVIEW**

Description	Rabbit polyclonal antibody to Claudin 4 (Phospho-Y208)
Specificity	Recognizes endogenous levels of Claudin 4 protein only when phosphorylated at Y208.
Antibody Type	Primary antibody
Immunogen	KLH-conjugated synthetic phosphopeptide corresponding to residues surrounding Y208 of human Claudin 4 protein. The exact sequence is proprietary.
Purification	The antibody was purified by immunogen affinity chromatography.
Molecular Weight	Predicted: 22 kD; Observed: 18 kD
Form/Buffer	Liquid in 0.42% Potassium phosphate, 0.87% Sodium chloride, pH 7.3, 30% glycerol, and 0.01% sodium azide.
Alternative Names	CPEP; CPETR1; WBSCR8; Claudin-4; Clostridium perfringens enterotoxin receptor; CPE-R; CPE-receptor; Williams-Beuren syndrome chromosomal region 8 protein
Gene Symbol	CLDN4
Entrez Gene	1364(Human); 12740(Mouse)
SwissProt	O14493(Human); O35054(Mouse)

\*AREX continuously optimizes our products. Webpage content may not reflect the latest updates. For inquiries, please contact [info@arexbio.com](mailto:info@arexbio.com) or your local distributor.

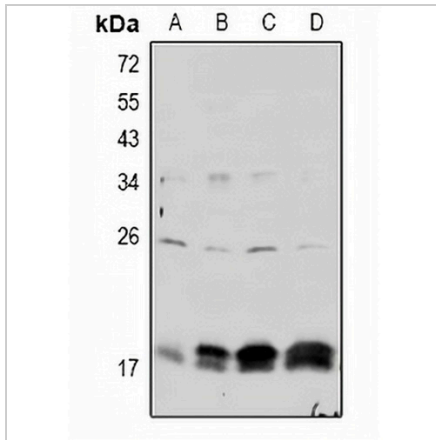
\*Clone Number, Reactivity, Source/Host and Clonality can be found in the product name and Key Features section above.

**DATASHEET**

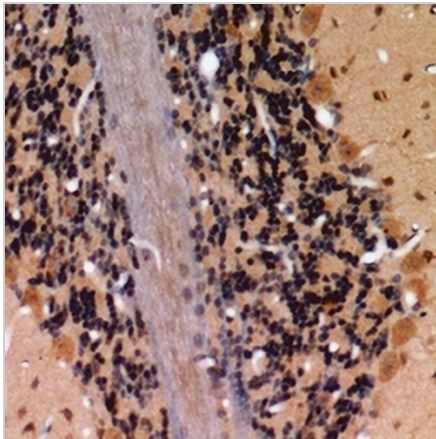
**Claudin 4 (Phospho-Y208) Rabbit Polyclonal Antibody**

CAT. NO. APA10943

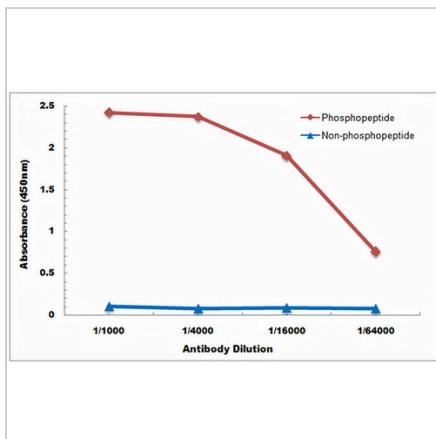
**DATA**



Western blot analysis of Claudin 4 (Phospho-Y208) expression in mouse embryo (A), rat ovary (B), Panc1 (C), HCT116 (D) whole cell lysates. (Predicted band size: 22 kD; Observed band size: 18 kD)



Immunohistochemical analysis of Claudin 4 (Phospho-Y208) staining in human brain formalin fixed paraffin embedded tissue section. The section was pre-treated using heat mediated antigen retrieval with sodium citrate buffer (pH 6.0). The section was then incubated with the antibody at room temperature and detected using an HRP conjugated compact polymer system. DAB was used as the chromogen. The section was then counterstained with haematoxylin and mounted with DPX.



Direct ELISA antibody dose-response curve using Anti-Claudin 4 (Phospho-Y208) Antibody. Antigen (Phosphopeptide and non-phosphopeptide) concentration is 5 ug/ml. Goat Anti-Rabbit IgG (H&L) - HRP was used as the secondary antibody, and signal was developed by TMB substrate.

**STORAGE**

Store at 4°C short term. For long term storage, store at -20°C, avoiding freeze/thaw cycles.

**NOTE**

For Research Use Only. Not for diagnostic, therapeutics, prophylactic or in vivo use.