

DATASHEET
PKN1/2 (Phospho-T774/816) Rabbit Polyclonal Antibody
CAT. NO. APA10950
KEY FEATURES

Target	PKN1/2 (Phospho-T774/816)	Source / Host	Rabbit
Reactivity	Human, Mouse, Rat, Bovine	Clonality	Polyclonal
Applications	WB	Conjugation	Unconjugated
Form / Buffer	Liquid in 0.42% Potassium phosphate, 0.87% Sodium chloride, pH 7.3, 30% glycerol, and 0.01% sodium azide.	Storage	at -20°C

BACKGROUND

PKC-related serine/threonine-protein kinase involved in various processes such as regulation of the intermediate filaments of the actin cytoskeleton, cell migration, tumor cell invasion and transcription regulation. Part of a signaling cascade that begins with the activation of the adrenergic receptor ADRA1B and leads to the activation of MAPK14. Regulates the cytoskeletal network by phosphorylating proteins such as VIM and neurofilament proteins NEFH, NEFL and NEFM, leading to inhibit their polymerization. Phosphorylates 'Ser-575', 'Ser-637' and 'Ser-669' of MAPT/Tau, lowering its ability to bind to microtubules, resulting in disruption of tubulin assembly.

APPLICATION

To ensure optimal assay performance, AREX recommends conducting reagent titration tailored to each testing system for optimal detection results.

WB	1:500 - 1:1000
----	----------------

*Results are sample-specific. Please refer to your local assay conditions and test parameters for reference.

PRODUCT OVERVIEW

Description	Rabbit polyclonal antibody to PKN1/2 (Phospho-T774/816)
Specificity	Recognizes endogenous levels of PKN1/2 protein only when phosphorylated at T774/816.
Antibody Type	Primary antibody
Immunogen	KLH-conjugated synthetic phosphopeptide corresponding to residues surrounding T774/816 of human PKN1/2 protein. The exact sequence is proprietary.
Purification	The antibody was purified by immunogen affinity chromatography.
Molecular Weight	Predicted: 103; Observed: 130 kD
Form/Buffer	Liquid in 0.42% Potassium phosphate, 0.87% Sodium chloride, pH 7.3, 30% glycerol, and 0.01% sodium azide.
Alternative Names	PKN1; PAK1; PKN; PRK1; PRKCL1; Serine/threonine-protein kinase N1; Protease-activated kinase 1; PAK-1; Protein kinase C-like 1; Protein kinase C-like PKN; Protein kinase PKN-alpha; Protein-kinase C-related kinase 1; Serine-threonine protein kinase N; PKN2; PRK2; PRKCL2; Serine/threonine-protein kinase N2; PKN gamma; Protein kinase C-like 2; Protein-kinase C-related kinase 2
Gene Symbol	PKN1; PKN2
Entrez Gene	5585; 5586(Human); 320795; 109333(Mouse); 29355(Rat)
SwissProt	Q16512; Q16513(Human); P70268; Q8BWW9(Mouse); Q63433; O08874(Rat)

*AREX continuously optimizes our products. Webpage content may not reflect the latest updates. For inquiries, please contact info@arexbio.com or your local distributor.

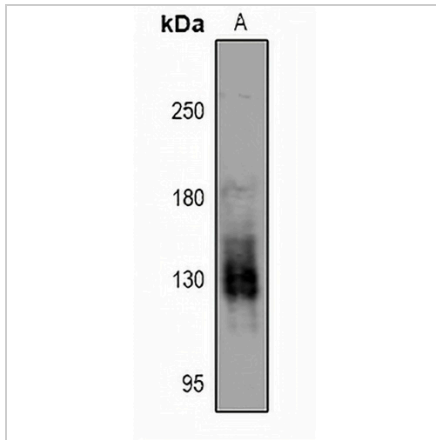
*Clone Number, Reactivity, Source/Host and Clonality can be found in the product name and Key Features section above.

DATASHEET

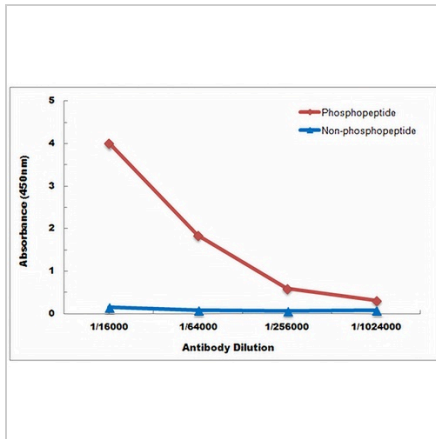
PKN1/2 (Phospho-T774/816) Rabbit Polyclonal Antibody

CAT. NO. APA10950

DATA



Western blot analysis of PKN1/2 (Phospho-T774/816) expression in HCT116 (A) whole cell lysates. (Predicted band size: 103; 112 kD; Observed band size: 130 kD)



Direct ELISA antibody dose-response curve using Anti-PKN1/2 (Phospho-T774/816) Antibody. Antigen (Phosphopeptide and non-phosphopeptide) concentration is 5 ug/ml. Goat Anti-Rabbit IgG (H&L) - HRP was used as the secondary antibody, and signal was developed by TMB substrate.

STORAGE

Store at 4°C short term. For long term storage, store at -20°C, avoiding freeze/thaw cycles.

NOTE

For Research Use Only. Not for diagnostic, therapeutics, prophylactic or in vivo use.