

DATASHEET

BTK Rabbit Polyclonal Antibody

CAT. NO. APA10953

KEY FEATURES

Target	BTK	Source / Host	Rabbit
Reactivity	Human, Mouse, Rat, Bovine, Dog, Monkey	Clonality	Polyclonal
Applications	WB, IHC	Conjugation	Unconjugated
Form / Buffer	Liquid in 0.42% Potassium phosphate, 0.87% Sodium chloride, pH 7.3, 30% glycerol, and 0.01% sodium azide.		Storage at -20°C

BACKGROUND

Non-receptor tyrosine kinase indispensable for B lymphocyte development, differentiation and signaling . Binding of antigen to the B-cell antigen receptor (BCR) triggers signaling that ultimately leads to B-cell activation . After BCR engagement and activation at the plasma membrane, phosphorylates PLCG2 at several sites, igniting the downstream signaling pathway through calcium mobilization, followed by activation of the protein kinase C (PKC) family members . PLCG2 phosphorylation is performed in close cooperation with the adapter protein B-cell linker protein BLNK . BTK acts as a platform to bring together a diverse array of signaling proteins and is implicated in cytokine receptor signaling pathways .

APPLICATION

To ensure optimal assay performance, AREX recommends conducting reagent titration tailored to each testing system for optimal detection results.

WB	1:500 - 1:1000
IHC	1:50 - 1:100

*Results are sample-specific. Please refer to your local assay conditions and test parameters for reference.

PRODUCT OVERVIEW

Description	Rabbit polyclonal antibody to BTK
Specificity	Recognizes endogenous levels of BTK protein.
Antibody Type	Primary antibody
Immunogen	KLH-conjugated synthetic peptide encompassing a sequence within the C-term region of human BTK. The exact sequence is proprietary.
Purification	The antibody was purified by immunogen affinity chromatography.
Molecular Weight	Predicted: 76 kD; Observed: 75 kD
Form/Buffer	Liquid in 0.42% Potassium phosphate, 0.87% Sodium chloride, pH 7.3, 30% glycerol, and 0.01% sodium azide.
Alternative Names	AGMX1; ATK; BPK; Tyrosine-protein kinase BTK; Agammaglobulinemia tyrosine kinase; ATK; B-cell progenitor kinase; BPK; Bruton tyrosine kinase
Gene Symbol	BTK
Entrez Gene	695(Human); 12229(Mouse)
SwissProt	Q06187(Human); P35991(Mouse)

*AREX continuously optimizes our products. Webpage content may not reflect the latest updates. For inquiries, please contact info@arexbio.com or your local distributor.

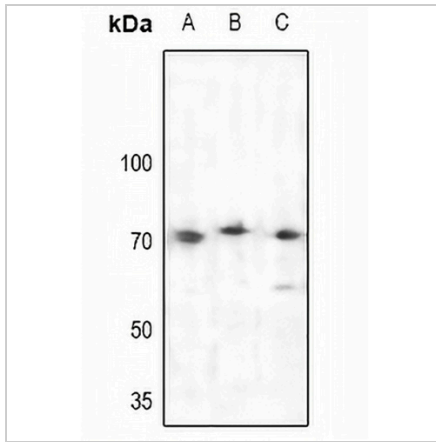
*Clone Number, Reactivity, Source/Host and Clonality can be found in the product name and Key Features section above.

DATASHEET

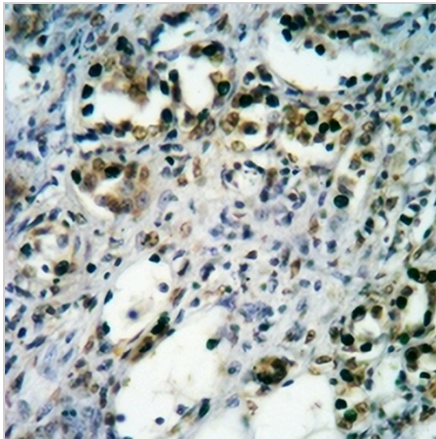
BTK Rabbit Polyclonal Antibody

CAT. NO. APA10953

DATA



Western blot analysis of BTK expression in mouse liver (A), rat brain (B), rat liver (C) whole cell lysates. (Predicted band size: 76 kD; Observed band size: 75 kD)



Immunohistochemical analysis of BTK staining in human breast cancer formalin fixed paraffin embedded tissue section. The section was pre-treated using heat mediated antigen retrieval with sodium citrate buffer (pH 6.0). The section was then incubated with the antibody at room temperature and detected using an HRP conjugated compact polymer system. DAB was used as the chromogen. The section was then counterstained with haematoxylin and mounted with DPX.

STORAGE

Store at 4°C short term. For long term storage, store at -20°C, avoiding freeze/thaw cycles.

NOTE

For Research Use Only. Not for diagnostic, therapeutics, prophylactic or in vivo use.