

DATASHEET

ETS1 Rabbit Polyclonal Antibody

CAT. NO. APA10978

KEY FEATURES

Target	ETS1	Source / Host	Rabbit
Reactivity	Human, Rat	Clonality	Polyclonal
Applications	WB, IF/ICC	Conjugation	Unconjugated
Form / Buffer	Liquid in 0.42% Potassium phosphate, 0.87% Sodium chloride, pH 7.3, 30% glycerol, and 0.01% sodium azide.		Storage at-20°C

BACKGROUND

Transcription factor . Directly controls the expression of cytokine and chemokine genes in a wide variety of different cellular contexts . May control the differentiation, survival and proliferation of lymphoid cells . May also regulate angiogenesis through regulation of expression of genes controlling endothelial cell migration and invasion .

APPLICATION

To ensure optimal assay performance, AREX recommends conducting reagent titration tailored to each testing system for optimal detection results.

WB	1:500 - 1:1000
IF/ICC	1:50 - 1:200

*Results are sample-specific. Please refer to your local assay conditions and test parameters for reference.

PRODUCT OVERVIEW

Description	Rabbit polyclonal antibody to ETS1
Specificity	Recognizes endogenous levels of ETS1 protein.
Antibody Type	Primary antibody
Immunogen	KLH-conjugated synthetic peptide encompassing a sequence within the center region of human ETS1. The exact sequence is proprietary.
Purification	The antibody was purified by immunogen affinity chromatography.
Molecular Weight	Predicted: 50 kD; Observed: 54 kD
Form/Buffer	Liquid in 0.42% Potassium phosphate, 0.87% Sodium chloride, pH 7.3, 30% glycerol, and 0.01% sodium azide.
Alternative Names	EWSR2; Protein C-ets-1; p54
Gene Symbol	ETS1
Entrez Gene	2113(Human); 24356(Rat)
SwissProt	P14921(Human); P41156(Rat)

*AREX continuously optimizes our products. Webpage content may not reflect the latest updates. For inquiries, please contact info@arexbio.com or your local distributor.

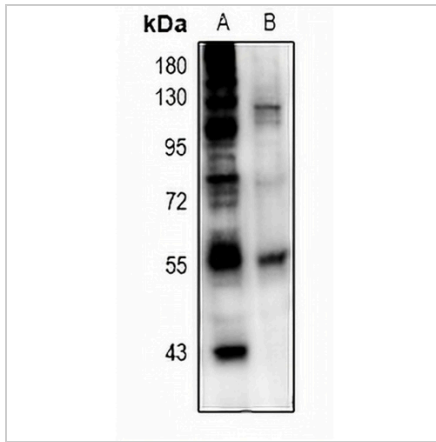
*Clone Number, Reactivity, Source/Host and Clonality can be found in the product name and Key Features section above.

DATASHEET

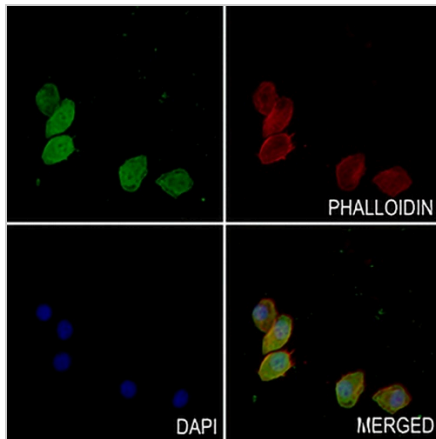
ETS1 Rabbit Polyclonal Antibody

CAT. NO. APA10978

DATA



Western blot analysis of ETS1 expression in K562 (A), rat spleen (B) whole cell lysates. (Predicted band size: 50 kD; Observed band size: 54 kD)



Immunofluorescent analysis of ETS1 staining in SGC7901 cells. Formalin-fixed cells were permeabilized with 0.1% Triton X-100 in TBS for 5-10 minutes and blocked with 3% BSA-PBS for 30 minutes at room temperature. Cells were probed with the primary antibody in 3% BSA-PBS and incubated overnight at 4 °C in a humidified chamber. Cells were washed with PBST and incubated with a AREX® Fluor 488 -conjugated secondary antibody (green) in PBS at room temperature in the dark. Phalloidin - AREX® Fluor 594 was used to stain Actin filaments (red). DAPI was used to stain the cell nuclei (blue).

STORAGE

Store at 4°C short term. For long term storage, store at -20°C, avoiding freeze/thaw cycles.

NOTE

For Research Use Only. Not for diagnostic, therapeutics, prophylactic or in vivo use.