

DATASHEET

Pleiotrophin Rabbit Polyclonal Antibody

CAT. NO. APA10987

KEY FEATURES

Target	Pleiotrophin	Source / Host	Rabbit
Reactivity	Human, Mouse, Rat, Bovine, Pig	Clonality	Polyclonal
Applications	WB, IF/ICC	Conjugation	Unconjugated
Form / Buffer	Liquid in 0.42% Potassium phosphate, 0.87% Sodium chloride, pH 7.3, 30% glycerol, and 0.01% sodium azide.		Storage at-20°C

BACKGROUND

Secreted growth factor that mediates its signal through cell-surface proteoglycan and non-proteoglycan receptors . Binds cell-surface proteoglycan receptor via their chondroitin sulfate (CS) groups . Thereby regulates many processes like cell proliferation, cell survival, cell growth, cell differentiation and cell migration in several tissues namely neuron and bone . Also plays a role in synaptic plasticity and learning-related behavior by inhibiting long-term synaptic potentiation .

APPLICATION

To ensure optimal assay performance, AREX recommends conducting reagent titration tailored to each testing system for optimal detection results.

WB	1:500 - 1:1000
IF/ICC	1:50 - 1:200

*Results are sample-specific. Please refer to your local assay conditions and test parameters for reference.

PRODUCT OVERVIEW

Description	Rabbit polyclonal antibody to Pleiotrophin
Specificity	Recognizes endogenous levels of Pleiotrophin protein.
Antibody Type	Primary antibody
Immunogen	KLH-conjugated synthetic peptide encompassing a sequence within the center region of human Pleiotrophin. The exact sequence is proprietary.
Purification	The antibody was purified by immunogen affinity chromatography.
Molecular Weight	Predicted: 18 kD; Observed: 19 kD
Form/Buffer	Liquid in 0.42% Potassium phosphate, 0.87% Sodium chloride, pH 7.3, 30% glycerol, and 0.01% sodium azide.
Alternative Names	HBNF1; NEGF1; Pleiotrophin; PTN; Heparin-binding brain mitogen; HBBM; Heparin-binding growth factor 8; HBGF-8; Heparin-binding growth-associated molecule; HB-GAM; Heparin-binding neurite outgrowth-promoting factor 1; HBNF-1; Osteoblast-specific factor 1; OSF-1
Gene Symbol	PTN
Entrez Gene	5764(Human); 19242(Mouse); 24924(Rat)
SwissProt	P21246(Human); P63089(Mouse); P63090(Rat)

*AREX continuously optimizes our products. Webpage content may not reflect the latest updates. For inquiries, please contact info@arexbio.com or your local distributor.

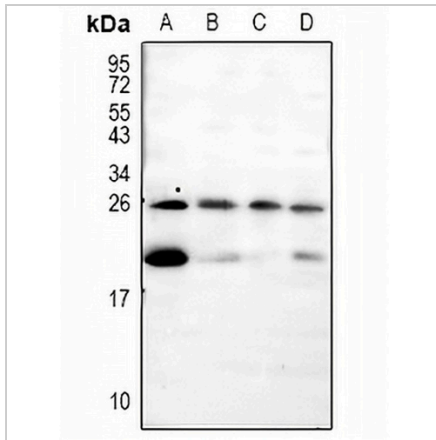
*Clone Number, Reactivity, Source/Host and Clonality can be found in the product name and Key Features section above.

DATASHEET

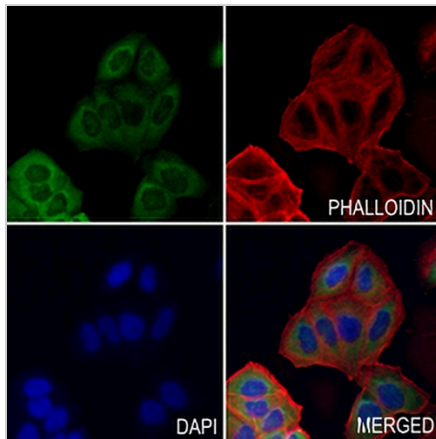
Pleiotrophin Rabbit Polyclonal Antibody

CAT. NO. APA10987

DATA



Western blot analysis of Pleiotrophin expression in HeLa (A), BV2 (B), C6 (C), U87MG (D) whole cell lysates. (Predicted band size: 18 kD; Observed band size: 19 kD)



Immunofluorescent analysis of Pleiotrophin staining in HepG2 cells. Formalin-fixed cells were permeabilized with 0.1% Triton X-100 in TBS for 5-10 minutes and blocked with 3% BSA-PBS for 30 minutes at room temperature. Cells were probed with the primary antibody in 3% BSA-PBS and incubated overnight at 4 °C in a humidified chamber. Cells were washed with PBST and incubated with a AREX® Fluor 488 -conjugated secondary antibody (green) in PBS at room temperature in the dark. Phalloidin - AREX® Fluor 594 was used to stain Actin filaments (red). DAPI was used to stain the cell nuclei (blue).

STORAGE

Store at 4°C short term. For long term storage, store at -20°C, avoiding freeze/thaw cycles.

NOTE

For Research Use Only. Not for diagnostic, therapeutics, prophylactic or in vivo use.