

DATASHEET

FKSG1 Rabbit Polyclonal Antibody

CAT. NO. APA10992

KEY FEATURES

Target	FKSG1	Source / Host	Rabbit
Reactivity	Human, Mouse, Rat	Clonality	Polyclonal
Applications	WB	Conjugation	Unconjugated
Form / Buffer	Liquid in 0.42% Potassium phosphate, 0.87% Sodium chloride, pH 7.3, 30% glycerol, and 0.01% sodium azide.		Storage at -20°C

BACKGROUND

Acts as a critical regulator of DNA damage response (DDR) signaling via specifically regulating phosphatidylinositol 3-kinase-related protein kinase (PIKK) family proteins.

APPLICATION

To ensure optimal assay performance, AREX recommends conducting reagent titration tailored to each testing system for optimal detection results.

WB	1:500 - 1:1000
----	----------------

*Results are sample-specific. Please refer to your local assay conditions and test parameters for reference.

PRODUCT OVERVIEW

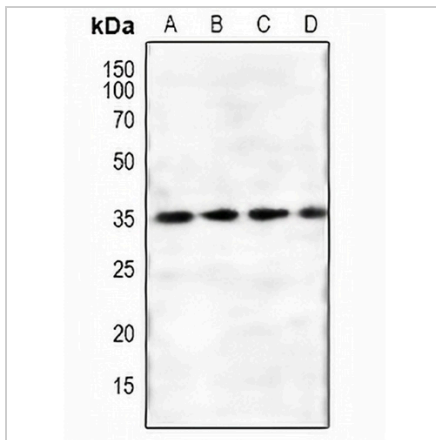
Description	Rabbit polyclonal antibody to FKSG1
Specificity	Recognizes endogenous levels of FKSG1 protein.
Antibody Type	Primary antibody
Immunogen	KLH-conjugated synthetic peptide encompassing a sequence within the C-term region of human FKSG1. The exact sequence is proprietary.
Purification	The antibody was purified by immunogen affinity chromatography.
Molecular Weight	Predicted: 35 kD; Observed: 35 kD
Form/Buffer	Liquid in 0.42% Potassium phosphate, 0.87% Sodium chloride, pH 7.3, 30% glycerol, and 0.01% sodium azide.
Alternative Names	GY2; KIAA1645; WDR14; Guanine nucleotide-binding protein subunit beta-like protein 1; G protein subunit beta-like protein 1; DGCRK3; WD repeat-containing protein 14; WD40 repeat-containing protein deleted in VCFS; WDVCF
Gene Symbol	GNB1L
Entrez Gene	54584(Human); 13972(Mouse)
SwissProt	Q9BYB4(Human); Q9EQ15(Mouse)

*AREX continuously optimizes our products. Webpage content may not reflect the latest updates. For inquiries, please contact info@arexbio.com or your local distributor.

*Clone Number, Reactivity, Source/Host and Clonality can be found in the product name and Key Features section above.

DATASHEET**FKSG1 Rabbit Polyclonal Antibody**

CAT. NO. APA10992

DATA

Western blot analysis of FKSG1 expression in mouse kidney (A), rat kidney (B), mouse heart (C), rat heart (D) whole cell lysates. (Predicted band size: 35 kD; Observed band size: 35 kD)

STORAGE

Store at 4°C short term. For long term storage, store at -20°C, avoiding freeze/thaw cycles.

NOTE

For Research Use Only. Not for diagnostic, therapeutics, prophylactic or in vivo use.