

DATASHEET

CD39 Rabbit Polyclonal Antibody

CAT. NO. APA11005

KEY FEATURES

Target	CD39	Source / Host	Rabbit
Reactivity	Human, Rat	Clonality	Polyclonal
Applications	WB	Conjugation	Unconjugated
Form / Buffer	Liquid in 0.42% Potassium phosphate, 0.87% Sodium chloride, pH 7.3, 30% glycerol, and 0.01% sodium azide.		Storage at-20°C

BACKGROUND

Catalyzes the hydrolysis of nucleoside triphosphates (NTPs) and diphosphates (NDPs) (Probable) and diphosphates (NDPs) (Probable) . The enzyme sequentially removes phosphate groups in two successive steps, converting NTPs to nucleoside monophosphates (NMPs) via NDP intermediates (Probable) . This activity contributes to the regulation of extracellular levels of nucleotides (Probable) . By hydrolyzing proinflammatory ATP and platelet-activating ADP to AMP, it blocks platelet aggregation and supports blood flow .

APPLICATION

To ensure optimal assay performance, AREX recommends conducting reagent titration tailored to each testing system for optimal detection results.

WB	1:500 - 1:1000
----	----------------

*Results are sample-specific. Please refer to your local assay conditions and test parameters for reference.

PRODUCT OVERVIEW

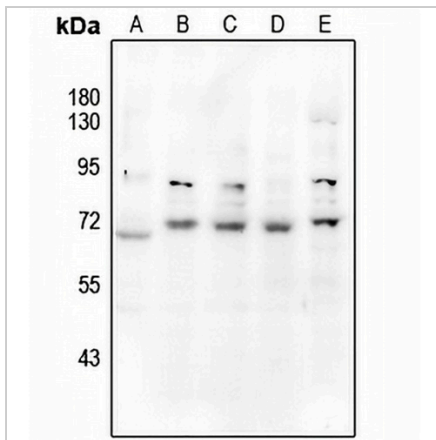
Description	Rabbit polyclonal antibody to CD39
Specificity	Recognizes endogenous levels of CD39 protein.
Antibody Type	Primary antibody
Immunogen	KLH-conjugated synthetic peptide encompassing a sequence within the center region of human CD39. The exact sequence is proprietary.
Purification	The antibody was purified by immunogen affinity chromatography.
Molecular Weight	Predicted: 57 kD; Observed: 72 kD
Form/Buffer	Liquid in 0.42% Potassium phosphate, 0.87% Sodium chloride, pH 7.3, 30% glycerol, and 0.01% sodium azide.
Alternative Names	CD39; Ectonucleoside triphosphate diphosphohydrolase 1; NTPDase 1; Ecto-ATP diphosphohydrolase 1; Ecto-ATPDase 1; Ecto-ATPase 1; Ecto-apyrase; Lymphoid cell activation antigen; CD39
Gene Symbol	ENTPD1
Entrez Gene	953(Human); 64519(Rat)
SwissProt	P49961(Human); P97687(Rat)

*AREX continuously optimizes our products. Webpage content may not reflect the latest updates. For inquiries, please contact info@arexbio.com or your local distributor.

*Clone Number, Reactivity, Source/Host and Clonality can be found in the product name and Key Features section above.

DATASHEET**CD39 Rabbit Polyclonal Antibody**

CAT. NO. APA11005

DATA

Western blot analysis of CD39 expression in H9C2 (A), MCF7 (B), HepG2 (C), SGC7901 (D), Myla2059 (E) whole cell lysates. (Predicted band size: 57 kD; Observed band size: 72 kD)

STORAGE

Store at 4°C short term. For long term storage, store at -20°C, avoiding freeze/thaw cycles.

NOTE

For Research Use Only. Not for diagnostic, therapeutics, prophylactic or in vivo use.