

DATASHEET

Myosin 6 Rabbit Polyclonal Antibody

CAT. NO. APA11008

KEY FEATURES

Target	Myosin 6	Source / Host	Rabbit
Reactivity	Human, Mouse, Rat	Clonality	Polyclonal
Applications	WB	Conjugation	Unconjugated
Form / Buffer	Liquid in 0.42% Potassium phosphate, 0.87% Sodium chloride, pH 7.3, 30% glycerol, and 0.01% sodium azide.		Storage at-20°C

BACKGROUND

Muscle contraction.

APPLICATION

To ensure optimal assay performance, AREX recommends conducting reagent titration tailored to each testing system for optimal detection results.

WB	1:500 - 1:1000
----	----------------

*Results are sample-specific. Please refer to your local assay conditions and test parameters for reference.

PRODUCT OVERVIEW

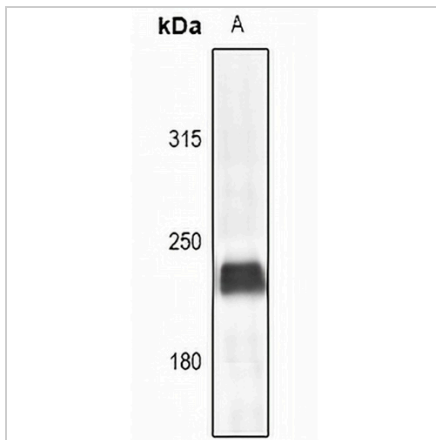
Description	Rabbit polyclonal antibody to Myosin 6
Specificity	Recognizes endogenous levels of Myosin 6 protein.
Antibody Type	Primary antibody
Immunogen	KLH-conjugated synthetic peptide encompassing a sequence within the C-term region of human Myosin 6. The exact sequence is proprietary.
Purification	The antibody was purified by immunogen affinity chromatography.
Molecular Weight	Predicted: 223 kD; Observed: 230 kD
Form/Buffer	Liquid in 0.42% Potassium phosphate, 0.87% Sodium chloride, pH 7.3, 30% glycerol, and 0.01% sodium azide.
Alternative Names	MYH6; MYHCA; Myosin-6; Myosin heavy chain 6; Myosin heavy chain cardiac muscle alpha isoform; MyHC-alpha; MYH7; MYHCB; Myosin-7; Myosin heavy chain 7; Myosin heavy chain slow isoform; MyHC-slow; Myosin heavy chain cardiac muscle beta isoform; MyHC-beta
Gene Symbol	MYH6; MYH7
Entrez Gene	4624; 4625(Human); 17888; 140781(Mouse); 29557(Rat)
SwissProt	P13533; P12883(Human); Q02566; Q91Z83(Mouse); P02563; P02564(Rat)

*AREX continuously optimizes our products. Webpage content may not reflect the latest updates. For inquiries, please contact info@arexbio.com or your local distributor.

*Clone Number, Reactivity, Source/Host and Clonality can be found in the product name and Key Features section above.

DATASHEET**Myosin 6 Rabbit Polyclonal Antibody**

CAT. NO. APA11008

DATA

Western blot analysis of Myosin 6 expression in mouse heart (A) whole cell lysates.
(Predicted band size: 223 kD; Observed band size: 230 kD)

STORAGE

Store at 4°C short term. For long term storage, store at -20°C, avoiding freeze/thaw cycles.

NOTE

For Research Use Only. Not for diagnostic, therapeutics, prophylactic or in vivo use.