

DATASHEET

Histone H2B (Acetyl-K85) Rabbit Polyclonal Antibody

CAT. NO. APA11014

KEY FEATURES

Target	Histone H2B (Acetyl-K85)	Source / Host	Rabbit
Reactivity	Human, Mouse, Rat, Bovine, Chicken	Clonality	Polyclonal
Applications	WB	Conjugation	Unconjugated
Form / Buffer	Liquid in 0.42% Potassium phosphate, 0.87% Sodium chloride, pH 7.3, 30% glycerol, and 0.01% sodium azide.	Storage	at-20°C

BACKGROUND

Core component of nucleosome. Nucleosomes wrap and compact DNA into chromatin, limiting DNA accessibility to the cellular machineries which require DNA as a template. Histones thereby play a central role in transcription regulation, DNA repair, DNA replication and chromosomal stability. DNA accessibility is regulated via a complex set of post-translational modifications of histones, also called histone code, and nucleosome remodeling.

APPLICATION

To ensure optimal assay performance, AREX recommends conducting reagent titration tailored to each testing system for optimal detection results.

WB	1:500 - 1:1000
----	----------------

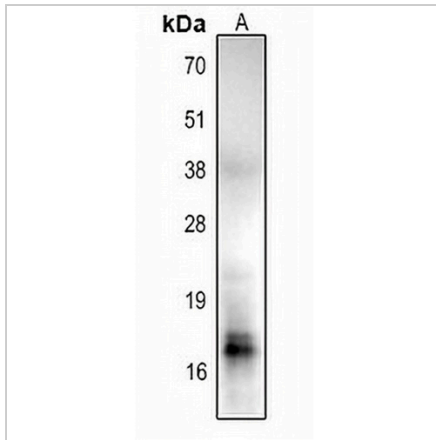
*Results are sample-specific. Please refer to your local assay conditions and test parameters for reference.

PRODUCT OVERVIEW

Description	Rabbit polyclonal antibody to Histone H2B (Acetyl-K85)
Specificity	Recognizes endogenous levels of Histone H2B protein only when acetylated at K85.
Antibody Type	Primary antibody
Immunogen	KLH-conjugated synthetic acetylated peptide corresponding to residues surrounding K85 of human Histone H2B protein. The exact sequence is proprietary.
Purification	The antibody was purified by immunogen affinity chromatography.
Molecular Weight	Predicted: 13 kD; Observed: 17 kD
Form/Buffer	Liquid in 0.42% Potassium phosphate, 0.87% Sodium chloride, pH 7.3, 30% glycerol, and 0.01% sodium azide.
Alternative Names	HIST1H2BB; H2BFF; Histone H2B type 1-B; Histone H2B.1; Histone H2B.f; H2B/f; HIST1H2BC; H2BFL; HIST1H2BE; H2BFH; HIST1H2BF; H2BFG; HIST1H2BG; H2BFA; HIST1H2BI; H2BFK; Histone H2B type 1-C/E/F/G/I; Histone H2B.1 A; Histone H2B.a; H2B/a; Histone H2B.g; H2B/g; Histone H2B.h; H2B/h; Histone H2B.k; H2B/k; Histone H2B.l; H2B/l; HIST1H2BD; H2BFB; HIRIP2; Histone H2B type 1-D; HIRA-interacting protein 2; Histone H2B.1 B; Histone H2B.b; H2B/b; HIST1H2BH; H2BFJ; Histone H2B type 1-H; Histone H2B.j; H2B/j; HIST1H2BJ; H2BFR; Histone H2B type 1-J; Histone H2B.1; Histone H2B.r; H2B/r; HIST1H2BK; H2BFT; HIRIP1; Histone H2B type 1-K; H2B K; HIRA-interacting protein 1; HIST1H2BL; H2BFC; Histone H2B type 1-L; Histone H2B.c; H2B/c; HIST1H2BM; H2BFE; Histone H2B type 1-M; Histone H2B.e; H2B/e; HIST1H2BN; H2BFD; Histone H2B type 1-N; Histone H2B.d; H2B/d; HIST1H2BO; H2BFH; H2BFN; Histone H2B type 1-O; Histone H2B.2; Histone H2B.n; H2B/n
Gene Symbol	HIST1H2BC; HIST1H2BE; HIST1H2BF; HIST1H2BG; HIST1H2BI; HIST1H2BD; HIST1H2BH; HIST1H2BK; HIST1H2BL; HIST1H2BM; HIST1H2BN; HIST2H2BF; H2BF5
Entrez Gene	3017; 8339; 8343; 8344; 8346; 8347; 3017; 8345; 85236; 8340; 8342; 8341; 440689(Human); 319178; 319179; 319182(Mouse)
SwissProt	P33778; P62807; P58876; Q93079; P06899; O60814; Q99880; Q99879; Q99877; P23527(Human); Q64475; Q6ZWY9; Q64478(Mouse)

DATASHEET**Histone H2B (Acetyl-K85) Rabbit Polyclonal Antibody**

CAT. NO. APA11014

DATA

Western blot analysis of Histone H2B (Acetyl-K85) expression in mouse kidney (A) whole cell lysates. (Predicted band size: 13 kD; Observed band size: 17 kD)

STORAGE

Store at 4°C short term. For long term storage, store at -20°C, avoiding freeze/thaw cycles.

NOTE

For Research Use Only. Not for diagnostic, therapeutics, prophylactic or in vivo use.