

DATASHEET

Cathepsin W Rabbit Polyclonal Antibody

CAT. NO. APA11018

KEY FEATURES

Target	Cathepsin W	Source / Host	Rabbit
Reactivity	Human, Mouse, Rat	Clonality	Polyclonal
Applications	WB	Conjugation	Unconjugated
Form / Buffer	Liquid in 0.42% Potassium phosphate, 0.87% Sodium chloride, pH 7.3, 30% glycerol, and 0.01% sodium azide.		Storage at -20°C

BACKGROUND

May have a specific function in the mechanism or regulation of T-cell cytolytic activity.; (Microbial infection) Plays a role during influenza virus infection in lungs cells ex vivo. Acts at the level of virus entering host cytoplasm from late endosome.

APPLICATION

To ensure optimal assay performance, AREX recommends conducting reagent titration tailored to each testing system for optimal detection results.

WB	1:500 - 1:1000
----	----------------

*Results are sample-specific. Please refer to your local assay conditions and test parameters for reference.

PRODUCT OVERVIEW

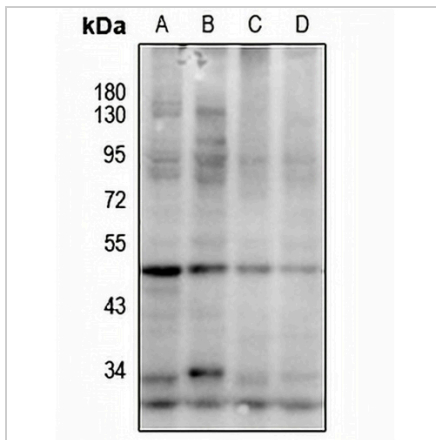
Description	Rabbit polyclonal antibody to Cathepsin W
Specificity	Recognizes endogenous levels of Cathepsin W protein.
Antibody Type	Primary antibody
Immunogen	KLH-conjugated synthetic peptide encompassing a sequence within the center region of human Cathepsin W. The exact sequence is proprietary.
Purification	The antibody was purified by immunogen affinity chromatography.
Molecular Weight	Predicted: 42 kD; Observed: 48 kD
Form/Buffer	Liquid in 0.42% Potassium phosphate, 0.87% Sodium chloride, pH 7.3, 30% glycerol, and 0.01% sodium azide.
Alternative Names	Cathepsin W; Lymphopain
Gene Symbol	CTSW
Entrez Gene	1521(Human); 13041(Mouse)
SwissProt	P56202(Human); P56203(Mouse)

*AREX continuously optimizes our products. Webpage content may not reflect the latest updates. For inquiries, please contact info@arexbio.com or your local distributor.

*Clone Number, Reactivity, Source/Host and Clonality can be found in the product name and Key Features section above.

DATASHEET**Cathepsin W Rabbit Polyclonal Antibody**

CAT. NO. APA11018

DATA

Western blot analysis of Cathepsin W expression in H1792 (A), HeLa (B), PMVEC (C), 3T3L1 (D) whole cell lysates. (Predicted band size: 42 kD; Observed band size: 48 kD)

STORAGE

Store at 4°C short term. For long term storage, store at -20°C, avoiding freeze/thaw cycles.

NOTE

For Research Use Only. Not for diagnostic, therapeutics, prophylactic or in vivo use.