

**DATASHEET**

**FOXO1/3 (Phospho-S322+S325/pS318+S321) Rabbit Polyclonal Antibody**

CAT. NO. APA11021

**KEY FEATURES**

Target	FOXO1/3 (Phospho-S322+S325/pS318+S321)	Source / Host	Rabbit
Reactivity	Human, Mouse, Rat, Bovine, Pig	Clonality	Polyclonal
Applications	WB, IHC	Conjugation	Unconjugated
Form / Buffer	Liquid in 0.42% Potassium phosphate, 0.87% Sodium chloride, pH 7.3, 30% glycerol, and 0.01% sodium azide.	Storage	at-20°C

**BACKGROUND**

Transcription factor that is the main target of insulin signaling and regulates metabolic homeostasis in response to oxidative stress . Binds to the insulin response element (IRE) with consensus sequence 5'-TT[G/A]TTTTG-3' and the related Daf-16 family binding element (DBE) with consensus sequence 5'-TT[G/A]TTTAC-3' . Activity suppressed by insulin . Main regulator of redox balance and osteoblast numbers and controls bone mass . Orchestrates the endocrine function of the skeleton in regulating glucose metabolism .

**APPLICATION**

To ensure optimal assay performance, AREX recommends conducting reagent titration tailored to each testing system for optimal detection results.

WB	1:500 - 1:1000
IHC	1:50 - 1:200

\*Results are sample-specific. Please refer to your local assay conditions and test parameters for reference.

**PRODUCT OVERVIEW**

Description	Rabbit polyclonal antibody to FOXO1/3 (Phospho-S322+S325/pS318+S321)
Specificity	Recognizes endogenous levels of FOXO1/3 protein only when phosphorylated at S322+S325/pS318+S321.
Antibody Type	Primary antibody
Immunogen	KLH-conjugated synthetic phosphopeptide corresponding to residues surrounding S322+S325/pS318+S321 of human FOXO1/3 protein. The exact sequence is proprietary.
Purification	The antibody was purified by immunogen affinity chromatography.
Molecular Weight	Predicted: 69; Observed: 72; 90 kD
Form/Buffer	Liquid in 0.42% Potassium phosphate, 0.87% Sodium chloride, pH 7.3, 30% glycerol, and 0.01% sodium azide.
Alternative Names	FOXO1; FKHR; FOXO1A; Forkhead box protein O1; Forkhead box protein O1A; Forkhead in rhabdomyosarcoma; FOXO3; FKHL1; FOXO3A; Forkhead box protein O3; AF6q21 protein; Forkhead in rhabdomyosarcoma-like 1
Gene Symbol	FOXO1; FOXO3
Entrez Gene	2308(Human); 56458; 56484(Mouse); 84482(Rat)
SwissProt	Q12778; O43524(Human); Q9R1E0; Q9WVH4(Mouse); G3V7R4(Rat)

\*AREX continuously optimizes our products. Webpage content may not reflect the latest updates. For inquiries, please contact [info@arexbio.com](mailto:info@arexbio.com) or your local distributor.

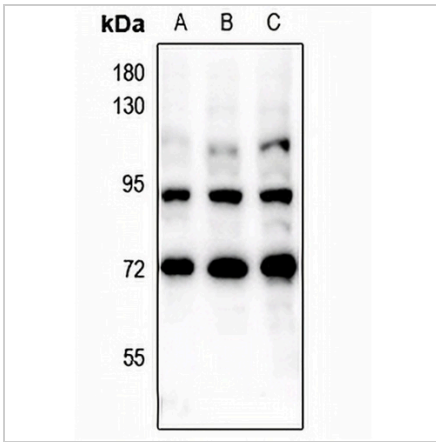
\*Clone Number, Reactivity, Source/Host and Clonality can be found in the product name and Key Features section above.

**DATASHEET**

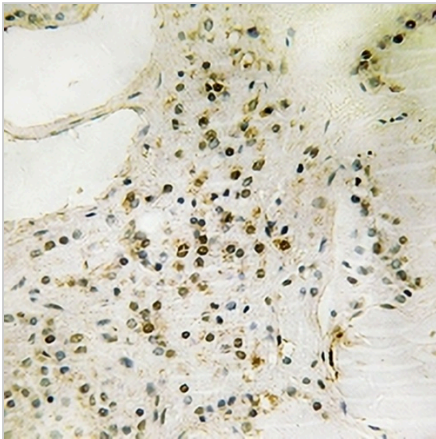
**FOXO1/3 (Phospho-S322+S325/pS318+S321) Rabbit Polyclonal Antibody**

CAT. NO. APA11021

**DATA**



Western blot analysis of FOXO1/3 (Phospho-S322+S325/pS318+S321) expression in Beas2B (A), A549 (B), HepG2 (C) whole cell lysates. (Predicted band size: 69; 71 kD; Observed band size: 72; 90 kD)



Immunohistochemical analysis of FOXO1/3 (Phospho-S322+S325/pS318+S321) staining in human thyroid gland formalin fixed paraffin embedded tissue section. The section was pre-treated using heat mediated antigen retrieval with sodium citrate buffer (pH 6.0). The section was then incubated with the antibody at room temperature and detected using an HRP conjugated compact polymer system. DAB was used as the chromogen. The section was then counterstained with haematoxylin and mounted with DPX.

**STORAGE**

Store at 4°C short term. For long term storage, store at -20°C, avoiding freeze/thaw cycles.

**NOTE**

For Research Use Only. Not for diagnostic, therapeutics, prophylactic or in vivo use.