

DATASHEET

CD50 (Phospho-S518) Rabbit Polyclonal Antibody

CAT. NO. APA11039

KEY FEATURES

Target	CD50 (Phospho-S518)	Source / Host	Rabbit
Reactivity	Human	Clonality	Polyclonal
Applications	WB, IHC	Conjugation	Unconjugated
Form / Buffer	Liquid in 0.42% Potassium phosphate, 0.87% Sodium chloride, pH 7.3, 30% glycerol, and 0.01% sodium azide.		Storage at -20°C

BACKGROUND

Cell adhesion molecule that functions as a receptor ligand of the signaling receptor ITGAL:ITGB2/LFA-1 (lymphocyte-function associated (LFA) molecule 1) ensuring apoptotic neutrophil phagocytosis by macrophages molecule 1) ensuring apoptotic neutrophil phagocytosis by macrophages . Is also a ligand for integrin ITGAD/ITGB2 . Ligand of CD209 on dendritic cells (DC) through an integrin-independent mechanism that requires Ca(2+) and that forms a first contact between DC and resting T cell, facilitating the downstream DC-T cell clustering process and DC-induced proliferation of resting T Cells .

APPLICATION

To ensure optimal assay performance, AREX recommends conducting reagent titration tailored to each testing system for optimal detection results.

WB	1:500 - 1:1000
IHC	1:50 - 1:100

*Results are sample-specific. Please refer to your local assay conditions and test parameters for reference.

PRODUCT OVERVIEW

Description	Rabbit polyclonal antibody to CD50 (Phospho-S518)
Specificity	Recognizes endogenous levels of CD50 protein only when phosphorylated at S518.
Antibody Type	Primary antibody
Immunogen	KLH-conjugated synthetic phosphopeptide corresponding to residues surrounding S518 of human CD50 protein. The exact sequence is proprietary.
Purification	The antibody was purified by immunogen affinity chromatography.
Molecular Weight	Predicted: 59 kD; Observed: 120 kD
Form/Buffer	Liquid in 0.42% Potassium phosphate, 0.87% Sodium chloride, pH 7.3, 30% glycerol, and 0.01% sodium azide.
Alternative Names	Intercellular adhesion molecule 3; ICAM-3; CDw50; ICAM-R; CD50
Gene Symbol	ICAM3
Entrez Gene	3385(Human)
SwissProt	P32942(Human)

*AREX continuously optimizes our products. Webpage content may not reflect the latest updates. For inquiries, please contact info@arexbio.com or your local distributor.

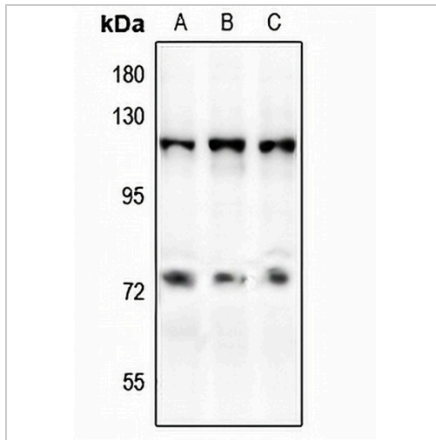
*Clone Number, Reactivity, Source/Host and Clonality can be found in the product name and Key Features section above.

DATASHEET

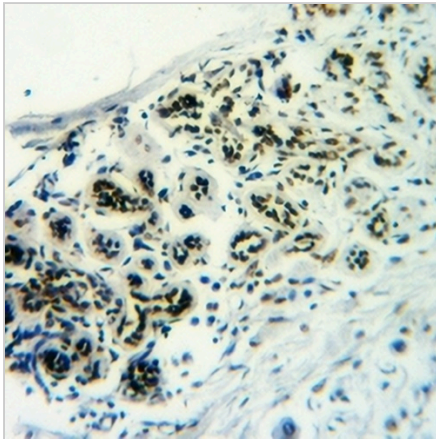
CD50 (Phospho-S518) Rabbit Polyclonal Antibody

CAT. NO. APA11039

DATA



Western blot analysis of CD50 (Phospho-S518) expression in A375 (A), Jurkat (B), Myla2059 (C) whole cell lysates. (Predicted band size: 59 kD; Observed band size: 120 kD)



Immunohistochemical analysis of CD50 (Phospho-S518) staining in human breast cancer formalin fixed paraffin embedded tissue section. The section was pre-treated using heat mediated antigen retrieval with sodium citrate buffer (pH 6.0). The section was then incubated with the antibody at room temperature and detected using an HRP conjugated compact polymer system. DAB was used as the chromogen. The section was then counterstained with haematoxylin and mounted with DPX.

STORAGE

Store at 4°C short term. For long term storage, store at -20°C, avoiding freeze/thaw cycles.

NOTE

For Research Use Only. Not for diagnostic, therapeutics, prophylactic or in vivo use.