

**DATASHEET**

**CD115 (Phospho-Y561) Rabbit Polyclonal Antibody**

CAT. NO. APA11040

**KEY FEATURES**

|               |   |               |              |
|---------------|---|---------------|--------------|
| Target        | CD115 (Phospho-Y561)  | Source / Host | Rabbit       |
| Reactivity    | Human, Mouse, Rat, Bovine, Monkey   | Clonality     | Polyclonal   |
| Applications  | WB, IHC, IF/ICC   | Conjugation   | Unconjugated |
| Form / Buffer | Liquid in 0.42% Potassium phosphate, 0.87% Sodium chloride, pH 7.3, 30% glycerol, and 0.01% sodium azide. | Storage       | at-20°C      |

**BACKGROUND**

Tyrosine-protein kinase that acts as a cell-surface receptor for CSF1 and IL34 and plays an essential role in the regulation of survival, proliferation and differentiation of hematopoietic precursor cells, especially mononuclear phagocytes, such as macrophages and monocytes. Promotes the release of pro-inflammatory chemokines in response to IL34 and CSF1, and thereby plays an important role in innate immunity and in inflammatory processes. Plays an important role in the regulation of osteoclast proliferation and differentiation, the regulation of bone resorption, and is required for normal bone and tooth development. Required for normal male and female fertility, and for normal development of milk ducts and acinar structures in the mammary gland during pregnancy.

**APPLICATION**

To ensure optimal assay performance, AREX recommends conducting reagent titration tailored to each testing system for optimal detection results.

|        |                |
|--------|----------------|
| WB     | 1:500 - 1:1000 |
| IHC    | 1:50 - 1:200   |
| IF/ICC | 1:50 - 1:200   |

\*Results are sample-specific. Please refer to your local assay conditions and test parameters for reference.

**PRODUCT OVERVIEW**

|                   |   |
|-------------------|---|
| Description       | Rabbit polyclonal antibody to CD115 (Phospho-Y561)  |
| Specificity       | Recognizes endogenous levels of CD115 protein only when phosphorylated at Y561.   |
| Antibody Type     | Primary antibody  |
| Immunogen         | KLH-conjugated synthetic phosphopeptide corresponding to residues surrounding Y561 of human CD115 protein. The exact sequence is proprietary. |
| Purification      | The antibody was purified by immunogen affinity chromatography.   |
| Molecular Weight  | Predicted: 107 kD; Observed: 107; 130 kD  |
| Form/Buffer       | Liquid in 0.42% Potassium phosphate, 0.87% Sodium chloride, pH 7.3, 30% glycerol, and 0.01% sodium azide.                                     |
| Alternative Names | FMS; Macrophage colony-stimulating factor 1 receptor; CSF-1 receptor; CSF-1-R; CSF-1R; M-CSF-R; Proto-oncogene c-Fms; CD115                   |
| Gene Symbol       | CSF1R   |
| Entrez Gene       | 1436(Human); 12978(Mouse)   |
| SwissProt         | P07333(Human); P09581(Mouse); Q00495(Rat)   |

\*AREX continuously optimizes our products. Webpage content may not reflect the latest updates. For inquiries, please contact [info@arex.bio](mailto:info@arex.bio) or your local distributor.

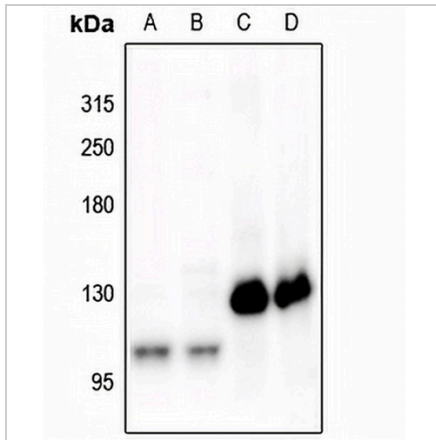
\*Clone Number, Reactivity, Source/Host and Clonality can be found in the product name and Key Features section above.

**DATASHEET**

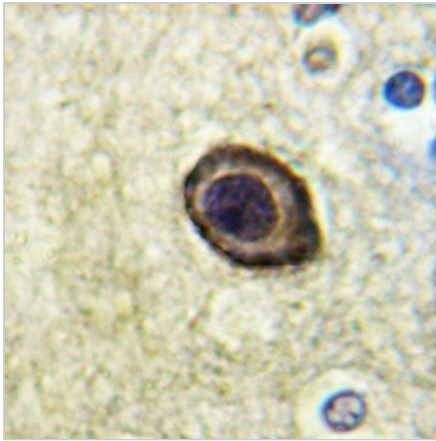
**CD115 (Phospho-Y561) Rabbit Polyclonal Antibody**

CAT. NO. APA11040

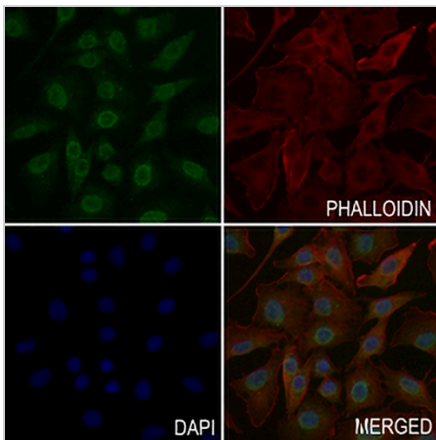
**DATA**



Western blot analysis of CD115 (Phospho-Y561) expression in HuT78 (A), Jurkat (B), mouse embryo (C), rat brain (D) whole cell lysates. (Predicted band size: 107 kD; Observed band size: 107; 130 kD)



Immunohistochemical analysis of CD115 (Phospho-Y561) staining in human brain formalin fixed paraffin embedded tissue section. The section was pre-treated using heat mediated antigen retrieval with sodium citrate buffer (pH 6.0). The section was then incubated with the antibody at room temperature and detected using an HRP conjugated compact polymer system. DAB was used as the chromogen. The section was then counterstained with haematoxylin and mounted with DPX.



Immunofluorescent analysis of CD115 (Phospho-Y561) staining in A549 cells. Formalin-fixed cells were permeabilized with 0.1% Triton X-100 in TBS for 5-10 minutes and blocked with 3% BSA-PBS for 30 minutes at room temperature. Cells were probed with the primary antibody in 3% BSA-PBS and incubated overnight at 4 °C in a humidified chamber. Cells were washed with PBST and incubated with a AREX® Fluor 488 - conjugated secondary antibody (green) in PBS at room temperature in the dark. Phalloidin - AREX® Fluor 594 was used to stain Actin filaments (red). DAPI was used to stain the cell nuclei (blue).

**STORAGE**

Store at 4°C short term. For long term storage, store at -20°C, avoiding freeze/thaw cycles.

**NOTE**

For Research Use Only. Not for diagnostic, therapeutics, prophylactic or in vivo use.