

**DATASHEET**

**Topoisomerase 2 alpha (Phospho-S1106) Rabbit Polyclonal Antibody**

CAT. NO. APA11054

**KEY FEATURES**

Target	Topoisomerase 2 alpha (Phospho-S1106)	Source / Host	Rabbit
Reactivity	Human, Mouse, Rat, Pig	Clonality	Polyclonal
Applications	WB, IHC, IF/ICC	Conjugation	Unconjugated
Form / Buffer	Liquid in 0.42% Potassium phosphate, 0.87% Sodium chloride, pH 7.3, 30% glycerol, and 0.01% sodium azide.	Storage	at-20°C

**BACKGROUND**

Key decatenating enzyme that alters DNA topology by binding to two double-stranded DNA molecules, generating a double-stranded break in one of the strands, passing the intact strand through the broken strand, and religating the broken strand . May play a role in regulating the period length of BMAL1 transcriptional oscillation .

**APPLICATION**

To ensure optimal assay performance, AREX recommends conducting reagent titration tailored to each testing system for optimal detection results.

WB	1:500 - 1:1000
IHC	1:50 - 1:200
IF/ICC	1:50 - 1:200

\*Results are sample-specific. Please refer to your local assay conditions and test parameters for reference.

**PRODUCT OVERVIEW**

Description	Rabbit polyclonal antibody to Topoisomerase 2 alpha (Phospho-S1106)
Specificity	Recognizes endogenous levels of Topoisomerase 2 alpha protein only when phosphorylated at S1106.
Antibody Type	Primary antibody
Immunogen	KLH-conjugated synthetic phosphopeptide corresponding to residues surrounding S1106 of human Topoisomerase 2 alpha protein. The exact sequence is proprietary.
Purification	The antibody was purified by immunogen affinity chromatography.
Molecular Weight	Predicted: 174 kD; Observed: 180 kD
Form/Buffer	Liquid in 0.42% Potassium phosphate, 0.87% Sodium chloride, pH 7.3, 30% glycerol, and 0.01% sodium azide.
Alternative Names	TOP2; DNA topoisomerase 2-alpha; DNA topoisomerase II alpha isozyme
Gene Symbol	TOP2A
Entrez Gene	7153(Human); 21973(Mouse); 360243(Rat)
SwissProt	P11388(Human); Q01320(Mouse); P41516(Rat)

\*AREX continuously optimizes our products. Webpage content may not reflect the latest updates. For inquiries, please contact [info@arexbio.com](mailto:info@arexbio.com) or your local distributor.

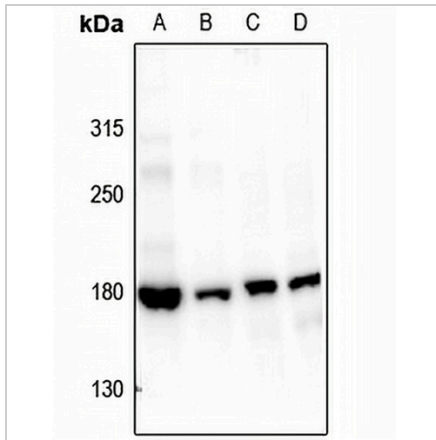
\*Clone Number, Reactivity, Source/Host and Clonality can be found in the product name and Key Features section above.

**DATASHEET**

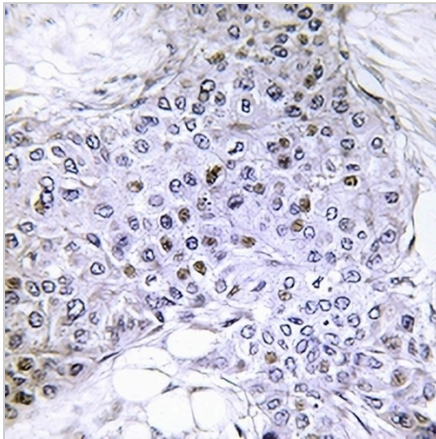
**Topoisomerase 2 alpha (Phospho-S1106) Rabbit Polyclonal Antibody**

CAT. NO. APA11054

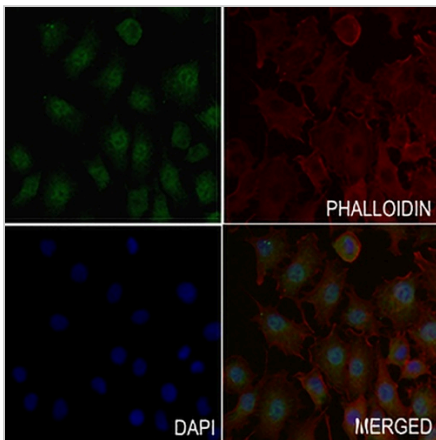
**DATA**



Western blot analysis of Topoisomerase 2 alpha (Phospho-S1106) expression in Myla2059 (A), HuT78 (B), mouse testis (C), rat testis (D) whole cell lysates. (Predicted band size: 174 kD; Observed band size: 180 kD)



Immunohistochemical analysis of Topoisomerase 2 alpha (Phospho-S1106) staining in human breast cancer formalin fixed paraffin embedded tissue section. The section was pre-treated using heat mediated antigen retrieval with sodium citrate buffer (pH 6.0). The section was then incubated with the antibody at room temperature and detected using an HRP conjugated compact polymer system. DAB was used as the chromogen. The section was then counterstained with haematoxylin and mounted with DPX.



Immunofluorescent analysis of Topoisomerase 2 alpha (Phospho-S1106) staining in A549 cells. Formalin-fixed cells were permeabilized with 0.1% Triton X-100 in TBS for 5-10 minutes and blocked with 3% BSA-PBS for 30 minutes at room temperature. Cells were probed with the primary antibody in 3% BSA-PBS and incubated overnight at 4 °C in a humidified chamber. Cells were washed with PBST and incubated with a ARES® Fluor 488 - conjugated secondary antibody (green) in PBS at room temperature in the dark. Phalloidin - ARES® Fluor 594 was used to stain Actin filaments (red). DAPI was used to stain the cell nuclei (blue).

**STORAGE**

Store at 4°C short term. For long term storage, store at -20°C, avoiding freeze/thaw cycles.

**NOTE**

For Research Use Only. Not for diagnostic, therapeutics, prophylactic or in vivo use.