

**DATASHEET**

**ETS1 (Phospho-S282) Rabbit Polyclonal Antibody**

CAT. NO. APA11065

**KEY FEATURES**

Target	ETS1 (Phospho-S282)	Source / Host	Rabbit
Reactivity	Human, Mouse, Rat, Chicken	Clonality	Polyclonal
Applications	WB, IF/ICC	Conjugation	Unconjugated
Form / Buffer	Liquid in 0.42% Potassium phosphate, 0.87% Sodium chloride, pH 7.3, 30% glycerol, and 0.01% sodium azide.		Storage at -20°C

**BACKGROUND**

Transcription factor . Directly controls the expression of cytokine and chemokine genes in a wide variety of different cellular contexts . May control the differentiation, survival and proliferation of lymphoid cells . May also regulate angiogenesis through regulation of expression of genes controlling endothelial cell migration and invasion .

**APPLICATION**

To ensure optimal assay performance, AREX recommends conducting reagent titration tailored to each testing system for optimal detection results.

WB	1:500 - 1:1000
IF/ICC	1:50 - 1:200

\*Results are sample-specific. Please refer to your local assay conditions and test parameters for reference.

**PRODUCT OVERVIEW**

Description	Rabbit polyclonal antibody to ETS1 (Phospho-S282)
Specificity	Recognizes endogenous levels of ETS1 protein only when phosphorylated at S282.
Antibody Type	Primary antibody
Immunogen	KLH-conjugated synthetic phosphopeptide corresponding to residues surrounding S282 of human ETS1 protein. The exact sequence is proprietary.
Purification	The antibody was purified by immunogen affinity chromatography.
Molecular Weight	Predicted: 50 kD; Observed: 54 kD
Form/Buffer	Liquid in 0.42% Potassium phosphate, 0.87% Sodium chloride, pH 7.3, 30% glycerol, and 0.01% sodium azide.
Alternative Names	EWSR2; Protein C-ets-1; p54
Gene Symbol	ETS1
Entrez Gene	2113(Human); 23871(Mouse); 24356(Rat)
SwissProt	P14921(Human); P27577(Mouse); P41156(Rat)

\*AREX continuously optimizes our products. Webpage content may not reflect the latest updates. For inquiries, please contact [info@arexbio.com](mailto:info@arexbio.com) or your local distributor.

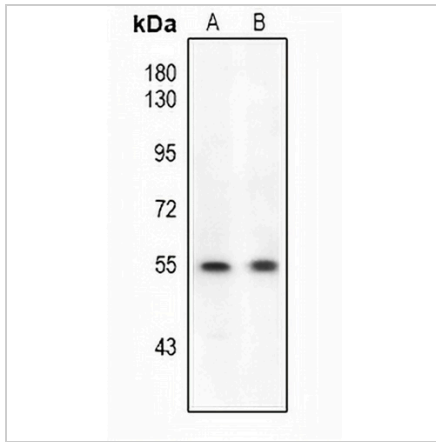
\*Clone Number, Reactivity, Source/Host and Clonality can be found in the product name and Key Features section above.

**DATASHEET**

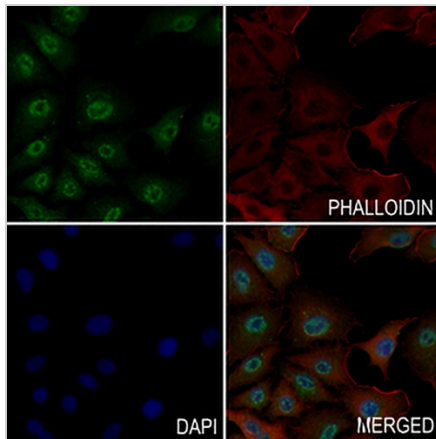
**ETS1 (Phospho-S282) Rabbit Polyclonal Antibody**

CAT. NO. APA11065

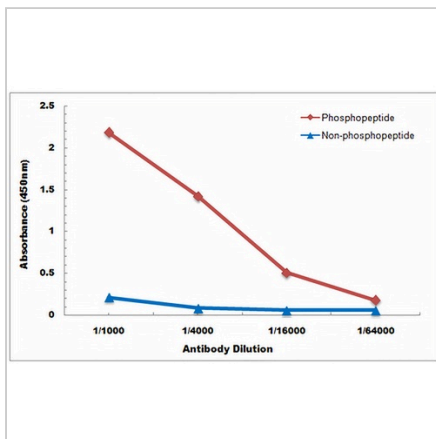
**DATA**



Western blot analysis of ETS1 (Phospho-S282) expression in A549 (A), H1792 (B) whole cell lysates. (Predicted band size: 50 kD; Observed band size: 54 kD)



Immunofluorescent analysis of ETS1 (Phospho-S282) staining in A549 cells. Formalin-fixed cells were permeabilized with 0.1% Triton X-100 in TBS for 5-10 minutes and blocked with 3% BSA-PBS for 30 minutes at room temperature. Cells were probed with the primary antibody in 3% BSA-PBS and incubated overnight at 4 °C in a hidified chamber. Cells were washed with PBST and incubated with a AREX® Fluor 488 - conjugated secondary antibody (green) in PBS at room temperature in the dark. Phalloidin - AREX® Fluor 594 was used to stain Actin filaments (red). DAPI was used to stain the cell nuclei (blue).



Direct ELISA antibody dose-response curve using Anti-ETS1 (Phospho-S282) Antibody. Antigen (Phosphopeptide and non-phosphopeptide) concentration is 5 ug/ml. Goat Anti-Rabbit IgG (H&L) - HRP was used as the secondary antibody, and signal was developed by TMB substrate.

**STORAGE**

Store at 4°C short term. For long term storage, store at -20°C, avoiding freeze/thaw cycles.

**NOTE**

For Research Use Only. Not for diagnostic, therapeutics, prophylactic or in vivo use.