

DATASHEET

XRCC4 Rabbit Polyclonal Antibody

CAT. NO. APA11089

KEY FEATURES

Target	XRCC4	Source / Host	Rabbit
Reactivity	Human, Rat	Clonality	Polyclonal
Applications	WB	Conjugation	Unconjugated
Form / Buffer	Liquid in 0.42% Potassium phosphate, 0.87% Sodium chloride, pH 7.3, 30% glycerol, and 0.01% sodium azide.		Storage at -20°C

BACKGROUND

DNA non-homologous end joining (NHEJ) core factor, required for double-strand break repair and V(D)J recombination core factor, required for double-strand break repair and V(D)J recombination . Acts as a scaffold protein that regulates recruitment of other proteins to DNA double-strand breaks (DSBs) . Associates with NHEJ1/XLF to form alternating helical filaments that bridge DNA and act like a bandage, holding together the broken DNA until it is repaired . The XRCC4-NHEJ1/XLF subcomplex binds to the DNA fragments of a DSB in a highly diffusive manner and robustly bridges two independent DNA molecules, holding the broken DNA fragments in close proximity to one other . The mobility of the bridges ensures that the ends remain accessible for further processing by other repair factors .

APPLICATION

To ensure optimal assay performance, AREX recommends conducting reagent titration tailored to each testing system for optimal detection results.

WB	1:500 - 1:1000
----	----------------

*Results are sample-specific. Please refer to your local assay conditions and test parameters for reference.

PRODUCT OVERVIEW

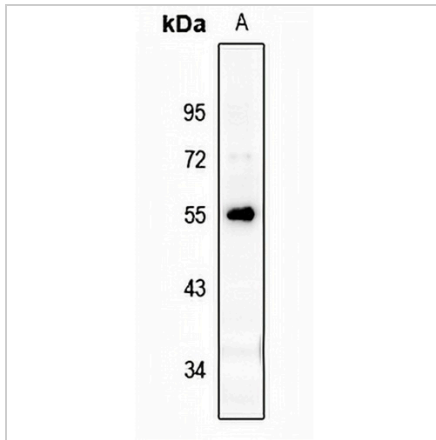
Description	Rabbit polyclonal antibody to XRCC4
Specificity	Recognizes endogenous levels of XRCC4 protein.
Antibody Type	Primary antibody
Immunogen	KLH-conjugated synthetic peptide encompassing a sequence within the C-term region of human XRCC4. The exact sequence is proprietary.
Purification	The antibody was purified by immunogen affinity chromatography.
Molecular Weight	Predicted: 38 kD; Observed: 55 kD
Form/Buffer	Liquid in 0.42% Potassium phosphate, 0.87% Sodium chloride, pH 7.3, 30% glycerol, and 0.01% sodium azide.
Alternative Names	DNA repair protein XRCC4; X-ray repair cross-complementing protein 4
Gene Symbol	XRCC4
Entrez Gene	7518(Human)
SwissProt	Q13426(Human)

*AREX continuously optimizes our products. Webpage content may not reflect the latest updates. For inquiries, please contact info@arexbio.com or your local distributor.

*Clone Number, Reactivity, Source/Host and Clonality can be found in the product name and Key Features section above.

DATASHEET**XRCC4 Rabbit Polyclonal Antibody**

CAT. NO. APA11089

DATA

Western blot analysis of XRCC4 expression in PC12 (A) whole cell lysates. (Predicted band size: 38 kD; Observed band size: 55 kD)

STORAGE

Store at 4°C short term. For long term storage, store at -20°C, avoiding freeze/thaw cycles.

NOTE

For Research Use Only. Not for diagnostic, therapeutics, prophylactic or in vivo use.