

**DATASHEET**

**TRAP240 Rabbit Polyclonal Antibody**

CAT. NO. APA11100

**KEY FEATURES**

Target	TRAP240	Source / Host	Rabbit
Reactivity	Human, Mouse	Clonality	Polyclonal
Applications	WB, IHC	Conjugation	Unconjugated
Form / Buffer	Liquid in 0.42% Potassium phosphate, 0.87% Sodium chloride, pH 7.3, 30% glycerol, and 0.01% sodium azide.		Storage at -20°C

**BACKGROUND**

Component of the Mediator complex, a coactivator involved in the regulated transcription of nearly all RNA polymerase II-dependent genes. Mediator functions as a bridge to convey information from gene-specific regulatory proteins to the basal RNA polymerase II transcription machinery. Mediator is recruited to promoters by direct interactions with regulatory proteins and serves as a scaffold for the assembly of a functional preinitiation complex with RNA polymerase II and the general transcription factors.

**APPLICATION**

To ensure optimal assay performance, AREX recommends conducting reagent titration tailored to each testing system for optimal detection results.

WB	1:500 - 1:1000
IHC	1:50 - 1:200

\*Results are sample-specific. Please refer to your local assay conditions and test parameters for reference.

**PRODUCT OVERVIEW**

Description	Rabbit polyclonal antibody to TRAP240
Specificity	Recognizes endogenous levels of TRAP240 protein.
Antibody Type	Primary antibody
Immunogen	KLH-conjugated synthetic peptide encompassing a sequence within the center region of human TRAP240. The exact sequence is proprietary.
Purification	The antibody was purified by immunogen affinity chromatography.
Molecular Weight	Predicted: 239 kD; Observed: 300 kD
Form/Buffer	Liquid in 0.42% Potassium phosphate, 0.87% Sodium chloride, pH 7.3, 30% glycerol, and 0.01% sodium azide.
Alternative Names	ARC250; KIAA0593; THRAP1; TRAP240; Mediator of RNA polymerase II transcription subunit 13; Activator-recruited cofactor 250 kDa component; ARC250; Mediator complex subunit 13; Thyroid hormone receptor-associated protein 1; Thyroid hormone receptor-associated protein complex 240 kDa component; Trap240; Vitamin D3 receptor-interacting protein complex component DRIP250; DRIP250
Gene Symbol	MED13
Entrez Gene	9969(Human); 327987(Mouse)
SwissProt	Q9UHV7(Human); Q5SWW4(Mouse)

\*AREX continuously optimizes our products. Webpage content may not reflect the latest updates. For inquiries, please contact [info@arexbio.com](mailto:info@arexbio.com) or your local distributor.

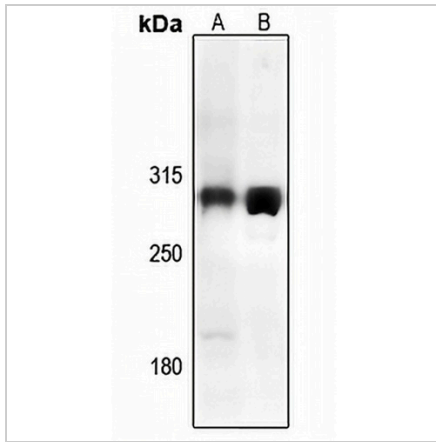
\*Clone Number, Reactivity, Source/Host and Clonality can be found in the product name and Key Features section above.

**DATASHEET**

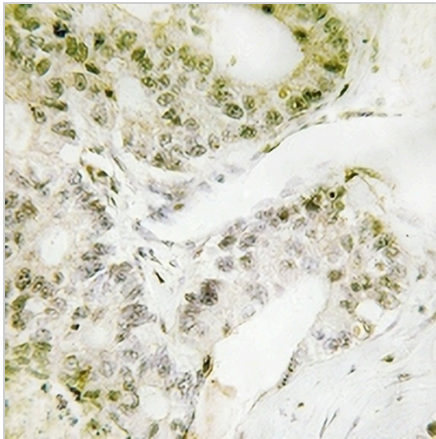
**TRAP240 Rabbit Polyclonal Antibody**

CAT. NO. APA11100

**DATA**



Western blot analysis of TRAP240 expression in PC3 (A), mouse heart (B) whole cell lysates. (Predicted band size: 239 kD; Observed band size: 300 kD)



Immunohistochemical analysis of TRAP240 staining in human lung cancer formalin fixed paraffin embedded tissue section. The section was pre-treated using heat mediated antigen retrieval with sodium citrate buffer (pH 6.0). The section was then incubated with the antibody at room temperature and detected using an HRP conjugated compact polymer system. DAB was used as the chromogen. The section was then counterstained with haematoxylin and mounted with DPX.

**STORAGE**

Store at 4°C short term. For long term storage, store at -20°C, avoiding freeze/thaw cycles.

**NOTE**

For Research Use Only. Not for diagnostic, therapeutics, prophylactic or in vivo use.