

DATASHEET

POLR2J Rabbit Polyclonal Antibody

CAT. NO. APA11127

KEY FEATURES

Target	POLR2J	Source / Host	Rabbit
Reactivity	Human, Mouse, Rat, Bovine	Clonality	Polyclonal
Applications	WB	Conjugation	Unconjugated
Form / Buffer	Liquid in 0.42% Potassium phosphate, 0.87% Sodium chloride, pH 7.3, 30% glycerol, and 0.01% sodium azide.		Storage at -20°C

BACKGROUND

Core component of RNA polymerase II (Pol II), a DNA-dependent RNA polymerase which synthesizes mRNA precursors and many functional non-coding RNAs using the four ribonucleoside triphosphates as substrates.

APPLICATION

To ensure optimal assay performance, AREX recommends conducting reagent titration tailored to each testing system for optimal detection results.

WB	1:500 - 1:1000
----	----------------

*Results are sample-specific. Please refer to your local assay conditions and test parameters for reference.

PRODUCT OVERVIEW

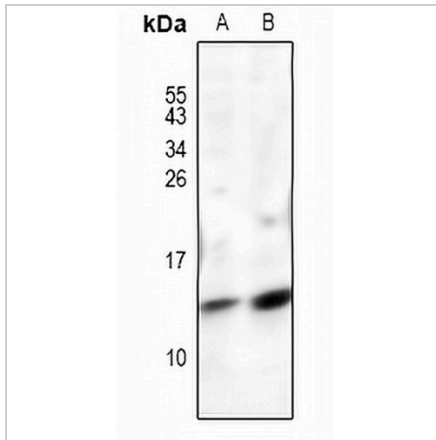
Description	Rabbit polyclonal antibody to POLR2J
Specificity	Recognizes endogenous levels of POLR2J protein.
Antibody Type	Primary antibody
Immunogen	KLH-conjugated synthetic peptide encompassing a sequence within the N-term region of human POLR2J. The exact sequence is proprietary.
Purification	The antibody was purified by immunogen affinity chromatography.
Molecular Weight	Predicted: 13 kD; Observed: 13 kD
Form/Buffer	Liquid in 0.42% Potassium phosphate, 0.87% Sodium chloride, pH 7.3, 30% glycerol, and 0.01% sodium azide.
Alternative Names	POLR2J1; DNA-directed RNA polymerase II subunit RPB11-a; RNA polymerase II subunit B11-a; RPB11a; DNA-directed RNA polymerase II subunit J-1; RNA polymerase II 13.3 kDa subunit
Gene Symbol	POLR2J
Entrez Gene	5439(Human)
SwissProt	P52435(Human); O08740(Mouse)

*AREX continuously optimizes our products. Webpage content may not reflect the latest updates. For inquiries, please contact info@arexbio.com or your local distributor.

*Clone Number, Reactivity, Source/Host and Clonality can be found in the product name and Key Features section above.

DATASHEET**POLR2J Rabbit Polyclonal Antibody**

CAT. NO. APA11127

DATA

Western blot analysis of POLR2J expression in CT26 (A), PC12 (B) whole cell lysates. (Predicted band size: 13 kD; Observed band size: 13 kD)

STORAGE

Store at 4°C short term. For long term storage, store at -20°C, avoiding freeze/thaw cycles.

NOTE

For Research Use Only. Not for diagnostic, therapeutics, prophylactic or in vivo use.