

**DATASHEET**

**GON4L Rabbit Polyclonal Antibody**

CAT. NO. APA11131

**KEY FEATURES**

Target	GON4L	Source / Host	Rabbit
Reactivity	Human	Clonality	Polyclonal
Applications	WB	Conjugation	Unconjugated
Form / Buffer	Liquid in 0.42% Potassium phosphate, 0.87% Sodium chloride, pH 7.3, 30% glycerol, and 0.01% sodium azide.		Storage at-20°C

**BACKGROUND**

Acts as a key transcription regulator of histones . Activates transcription of the histone H2A, histone H2B, histone H3 and histone H4 genes in conjunction with GON4L and MIZF . Together with CRAMP1, binds to the promoters of H1 genes (H1-2, H1-3, H1-4, H1-5 and H1-10/H1x), driving their transcription . Also acts as a transcription corepressor, as part of a complex with YY1, SIN3A and HDAC1 . Required for B-cell lymphopoiesis .

**APPLICATION**

To ensure optimal assay performance, AREX recommends conducting reagent titration tailored to each testing system for optimal detection results.

WB	1:500 - 1:1000
----	----------------

\*Results are sample-specific. Please refer to your local assay conditions and test parameters for reference.

**PRODUCT OVERVIEW**

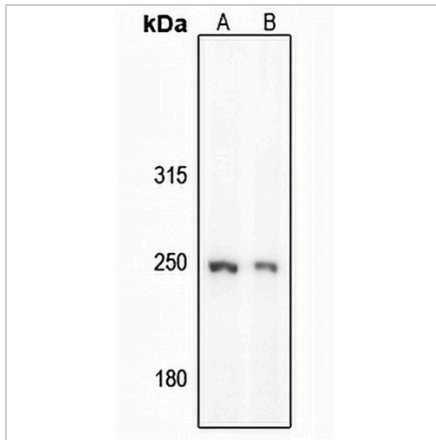
Description	Rabbit polyclonal antibody to GON4L
Specificity	Recognizes endogenous levels of GON4L protein.
Antibody Type	Primary antibody
Immunogen	KLH-conjugated synthetic peptide encompassing a sequence within the N-term region of human GON4L. The exact sequence is proprietary.
Purification	The antibody was purified by immunogen affinity chromatography.
Molecular Weight	Predicted: 248 kD; Observed: 250 kD
Form/Buffer	Liquid in 0.42% Potassium phosphate, 0.87% Sodium chloride, pH 7.3, 30% glycerol, and 0.01% sodium azide.
Alternative Names	GON4; KIAA1606; GON-4-like protein; GON-4 homolog
Gene Symbol	GON4L
Entrez Gene	54856(Human)
SwissProt	Q3T8J9(Human)

\*AREX continuously optimizes our products. Webpage content may not reflect the latest updates. For inquiries, please contact [info@arexbio.com](mailto:info@arexbio.com) or your local distributor.

\*Clone Number, Reactivity, Source/Host and Clonality can be found in the product name and Key Features section above.

**DATASHEET****GON4L Rabbit Polyclonal Antibody**

CAT. NO. APA11131

**DATA**

Western blot analysis of GON4L expression in HEK293T (A), K562 (B) whole cell lysates. (Predicted band size: 248 kD; Observed band size: 250 kD)

**STORAGE**

Store at 4°C short term. For long term storage, store at -20°C, avoiding freeze/thaw cycles.

**NOTE**

For Research Use Only. Not for diagnostic, therapeutics, prophylactic or in vivo use.