

DATASHEET

CD208 Rabbit Polyclonal Antibody

CAT. NO. APA11135

KEY FEATURES

Target	CD208	Source / Host	Rabbit
Reactivity	Human, Mouse, Rat	Clonality	Polyclonal
Applications	WB, IHC, IF/ICC	Conjugation	Unconjugated
Form / Buffer	Liquid in 0.42% Potassium phosphate, 0.87% Sodium chloride, pH 7.3, 30% glycerol, and 0.01% sodium azide.		Storage at -20°C

BACKGROUND

Lysosomal membrane glycoprotein which plays a role in the unfolded protein response (UPR) that contributes to protein degradation and cell survival during proteasomal dysfunction that contributes to protein degradation and cell survival during proteasomal dysfunction . Plays a role in the process of fusion of the lysosome with the autophagosome, thereby modulating the autophagic process . Promotes hepatocellular lipogenesis through activation of the PI3K/Akt pathway . May also play a role in dendritic cell function and in adaptive immunity .

APPLICATION

To ensure optimal assay performance, AREX recommends conducting reagent titration tailored to each testing system for optimal detection results.

WB	1:500 - 1:1000
IHC	1:50 - 1:200
IF/ICC	1:50 - 1:200

*Results are sample-specific. Please refer to your local assay conditions and test parameters for reference.

PRODUCT OVERVIEW

Description	Rabbit polyclonal antibody to CD208
Specificity	Recognizes endogenous levels of CD208 protein.
Antibody Type	Primary antibody
Immunogen	KLH-conjugated synthetic peptide encompassing a sequence within the center region of human CD208. The exact sequence is proprietary.
Purification	The antibody was purified by immunogen affinity chromatography.
Molecular Weight	Predicted: 44 kD; Observed: 48 kD
Form/Buffer	Liquid in 0.42% Potassium phosphate, 0.87% Sodium chloride, pH 7.3, 30% glycerol, and 0.01% sodium azide.
Alternative Names	DCLAMP; TSC403; Lysosome-associated membrane glycoprotein 3; LAMP-3; Lysosomal-associated membrane protein 3; DC-lysosome-associated membrane glycoprotein; DC LAMP; Protein TSC403; CD208
Gene Symbol	LAMP3
Entrez Gene	27074(Human); 239739(Mouse); 303801(Rat)
SwissProt	Q9UQV4(Human); Q7TST5(Mouse); Q5XI99(Rat)

*AREX continuously optimizes our products. Webpage content may not reflect the latest updates. For inquiries, please contact info@arexbio.com or your local distributor.

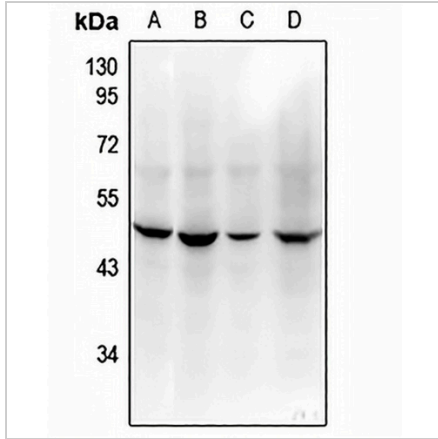
*Clone Number, Reactivity, Source/Host and Clonality can be found in the product name and Key Features section above.

DATASHEET

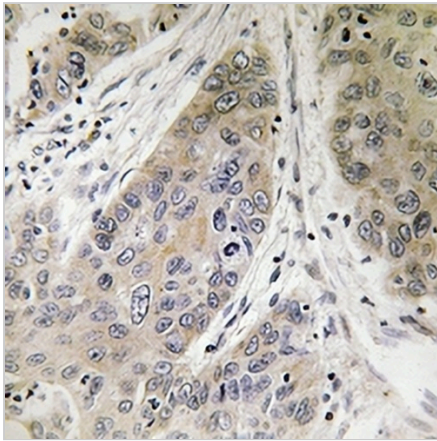
CD208 Rabbit Polyclonal Antibody

CAT. NO. APA11135

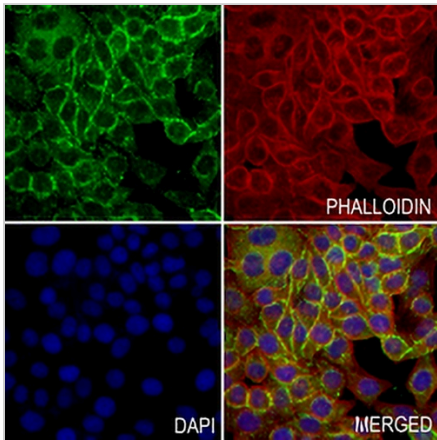
DATA



Western blot analysis of CD208 expression in PC3 (A), A2780 (B), PMVEC (C), Raw264.7 (D) whole cell lysates. (Predicted band size: 44 kD; Observed band size: 48 kD)



Immunohistochemical analysis of CD208 staining in human lung cancer formalin fixed paraffin embedded tissue section. The section was pre-treated using heat mediated antigen retrieval with sodium citrate buffer (pH 6.0). The section was then incubated with the antibody at room temperature and detected using an HRP conjugated compact polymer system. DAB was used as the chromogen. The section was then counterstained with haematoxylin and mounted with DPX.



Immunofluorescent analysis of CD208 staining in MCF7 cells. Formalin-fixed cells were permeabilized with 0.1% Triton X-100 in TBS for 5-10 minutes and blocked with 3% BSA-PBS for 30 minutes at room temperature. Cells were probed with the primary antibody in 3% BSA-PBS and incubated overnight at 4 °C in a humidified chamber. Cells were washed with PBST and incubated with a AREX® Fluor 488 -conjugated secondary antibody (green) in PBS at room temperature in the dark. Phalloidin - AREX® Fluor 594 was used to stain Actin filaments (red). DAPI was used to stain the cell nuclei (blue).

STORAGE

Store at 4°C short term. For long term storage, store at -20°C, avoiding freeze/thaw cycles.

NOTE

For Research Use Only. Not for diagnostic, therapeutics, prophylactic or in vivo use.