

DATASHEET

MAL Rabbit Polyclonal Antibody

CAT. NO. APA11138

KEY FEATURES

Target	MAL	Source / Host	Rabbit
Reactivity	Human, Mouse, Rat	Clonality	Polyclonal
Applications	WB	Conjugation	Unconjugated
Form / Buffer	Liquid in 0.42% Potassium phosphate, 0.87% Sodium chloride, pH 7.3, 30% glycerol, and 0.01% sodium azide.		Storage at-20°C

BACKGROUND

May be involved in vesicular trafficking from the Golgi apparatus to the cell membrane. Plays a role in the maintenance of the myelin sheath, and in axon-glia and glia-glia interactions.

APPLICATION

To ensure optimal assay performance, AREX recommends conducting reagent titration tailored to each testing system for optimal detection results.

WB	1:500 - 1:1000
----	----------------

*Results are sample-specific. Please refer to your local assay conditions and test parameters for reference.

PRODUCT OVERVIEW

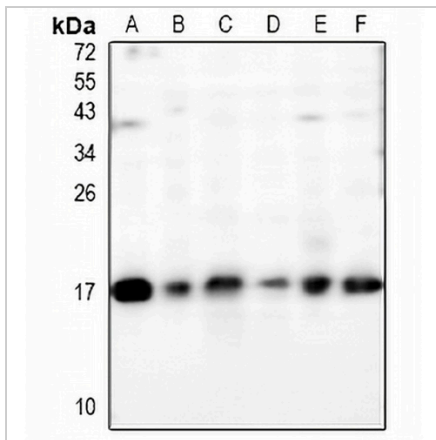
Description	Rabbit polyclonal antibody to MAL
Specificity	Recognizes endogenous levels of MAL protein.
Antibody Type	Primary antibody
Immunogen	KLH-conjugated synthetic peptide encompassing a sequence within the C-term region of human MAL. The exact sequence is proprietary.
Purification	The antibody was purified by immunogen affinity chromatography.
Molecular Weight	Predicted: 16 kD; Observed: 17 kD
Form/Buffer	Liquid in 0.42% Potassium phosphate, 0.87% Sodium chloride, pH 7.3, 30% glycerol, and 0.01% sodium azide.
Alternative Names	Myelin and lymphocyte protein; T-lymphocyte maturation-associated protein
Gene Symbol	MAL
Entrez Gene	4118(Human); 17153(Mouse); 25263(Rat)
SwissProt	P21145(Human); O09198(Mouse); Q64349(Rat)

*AREX continuously optimizes our products. Webpage content may not reflect the latest updates. For inquiries, please contact info@arexbio.com or your local distributor.

*Clone Number, Reactivity, Source/Host and Clonality can be found in the product name and Key Features section above.

DATASHEET**MAL Rabbit Polyclonal Antibody**

CAT. NO. APA11138

DATA

Western blot analysis of MAL expression in Myla2059 (A), HuT78 (B), rat spleen (C), mouse spleen (D), AML12 (E), CT26 (F) whole cell lysates. (Predicted band size: 16 kD; Observed band size: 17 kD)

STORAGE

Store at 4°C short term. For long term storage, store at -20°C, avoiding freeze/thaw cycles.

NOTE

For Research Use Only. Not for diagnostic, therapeutics, prophylactic or in vivo use.