

DATASHEET

NDUFC1 Rabbit Polyclonal Antibody

CAT. NO. APA11139

KEY FEATURES

| | | | |
|---------------|---|---------------|--------------------|
| Target | NDUFC1 | Source / Host | Rabbit |
| Reactivity | Human, Mouse, Rat | Clonality | Polyclonal |
| Applications | WB, IHC | Conjugation | Unconjugated |
| Form / Buffer | Liquid in 0.42% Potassium phosphate, 0.87% Sodium chloride, pH 7.3, 30% glycerol, and 0.01% sodium azide. | | Storage at-20°C |

BACKGROUND

Accessory subunit of the mitochondrial membrane respiratory chain NADH dehydrogenase (Complex I), that is believed not to be involved in catalysis. Complex I functions in the transfer of electrons from NADH to the respiratory chain. The immediate electron acceptor for the enzyme is believed to be ubiquinone.

APPLICATION

To ensure optimal assay performance, AREX recommends conducting reagent titration tailored to each testing system for optimal detection results.

| | |
|-----|----------------|
| WB | 1:500 - 1:1000 |
| IHC | 1:50 - 1:200 |

*Results are sample-specific. Please refer to your local assay conditions and test parameters for reference.

PRODUCT OVERVIEW

| | |
|-------------------|---|
| Description | Rabbit polyclonal antibody to NDUFC1 |
| Specificity | Recognizes endogenous levels of NDUFC1 protein. |
| Antibody Type | Primary antibody |
| Immunogen | KLH-conjugated synthetic peptide encompassing a sequence within the center region of human NDUFC1. The exact sequence is proprietary. |
| Purification | The antibody was purified by immunogen affinity chromatography. |
| Molecular Weight | Predicted: 8 kD; Observed: 9 kD |
| Form/Buffer | Liquid in 0.42% Potassium phosphate, 0.87% Sodium chloride, pH 7.3, 30% glycerol, and 0.01% sodium azide. |
| Alternative Names | NADH dehydrogenase [ubiquinone] 1 subunit C1 mitochondrial; Complex I-KFYI; CI-KFYI; NADH-ubiquinone oxidoreductase KFYI subunit |
| Gene Symbol | NDUFC1 |
| Entrez Gene | 4717(Human); 66377(Mouse) |
| SwissProt | O43677(Human); Q9CQY9(Mouse) |

*AREX continuously optimizes our products. Webpage content may not reflect the latest updates. For inquiries, please contact info@arexbio.com or your local distributor.

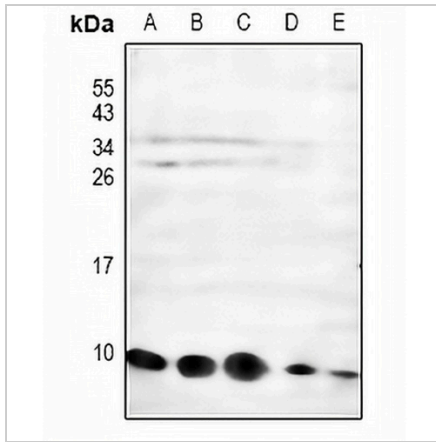
*Clone Number, Reactivity, Source/Host and Clonality can be found in the product name and Key Features section above.

DATASHEET

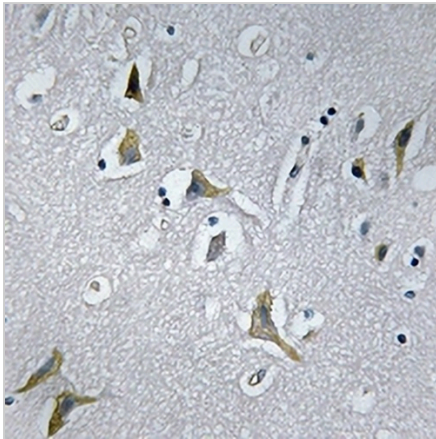
NDUFC1 Rabbit Polyclonal Antibody

CAT. NO. APA11139

DATA



Western blot analysis of NDUFC1 expression in LOVO (A), SGC7901 (B), HEK293T (C), mouse kidney (D), rat brain (E) whole cell lysates. (Predicted band size: 8 kD; Observed band size: 9 kD)



Immunohistochemical analysis of NDUFC1 staining in human brain formalin fixed paraffin embedded tissue section. The section was pre-treated using heat mediated antigen retrieval with sodium citrate buffer (pH 6.0). The section was then incubated with the antibody at room temperature and detected using an HRP conjugated compact polymer system. DAB was used as the chromogen. The section was then counterstained with haematoxylin and mounted with DPX.

STORAGE

Store at 4°C short term. For long term storage, store at -20°C, avoiding freeze/thaw cycles.

NOTE

For Research Use Only. Not for diagnostic, therapeutics, prophylactic or in vivo use.