

DATASHEET

Kv10.1 Rabbit Polyclonal Antibody

CAT. NO. APA11144

KEY FEATURES

Target	Kv10.1	Source / Host	Rabbit
Reactivity	Human, Mouse, Rat	Clonality	Polyclonal
Applications	WB	Conjugation	Unconjugated
Form / Buffer	Liquid in 0.42% Potassium phosphate, 0.87% Sodium chloride, pH 7.3, 30% glycerol, and 0.01% sodium azide.		Storage at-20°C

BACKGROUND

Regulatory subunit of the voltage-gated potassium (Kv) channel which, when coassembled with KCNB1, modulates the kinetics parameters of the heterotetrameric channel namely the inactivation and deactivation rate channel which, when coassembled with KCNB1, modulates the kinetics parameters of the heterotetrameric channel namely the inactivation and deactivation rate . Potassium channel subunit that does not form functional channels by itself . Reduces the deactivation rate . Moderately accelerates activation .

APPLICATION

To ensure optimal assay performance, AREX recommends conducting reagent titration tailored to each testing system for optimal detection results.

WB	1:500 - 1:1000
----	----------------

*Results are sample-specific. Please refer to your local assay conditions and test parameters for reference.

PRODUCT OVERVIEW

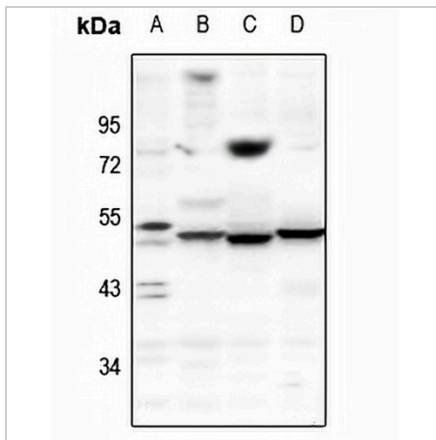
Description	Rabbit polyclonal antibody to Kv10.1
Specificity	Recognizes endogenous levels of Kv10.1 protein.
Antibody Type	Primary antibody
Immunogen	KLH-conjugated synthetic peptide encompassing a sequence within the center region of human Kv10.1. The exact sequence is proprietary.
Purification	The antibody was purified by immunogen affinity chromatography.
Molecular Weight	Predicted: 49 kD; Observed: 50 kD
Form/Buffer	Liquid in 0.42% Potassium phosphate, 0.87% Sodium chloride, pH 7.3, 30% glycerol, and 0.01% sodium azide.
Alternative Names	Potassium voltage-gated channel subfamily G member 3; Voltage-gated potassium channel subunit Kv10.1; Voltage-gated potassium channel subunit Kv6.3
Gene Symbol	KCNG3
Entrez Gene	170850(Human); 225030(Mouse); 171011(Rat)
SwissProt	Q8TAE7(Human); P59053(Mouse); Q8R523(Rat)

*AREX continuously optimizes our products. Webpage content may not reflect the latest updates. For inquiries, please contact info@arexbio.com or your local distributor.

*Clone Number, Reactivity, Source/Host and Clonality can be found in the product name and Key Features section above.

DATASHEET**Kv10.1 Rabbit Polyclonal Antibody**

CAT. NO. APA11144

DATA

Western blot analysis of Kv10.1 expression in HEK293T (A), C6 (B), AML12 (C), HCT116 (D) whole cell lysates. (Predicted band size: 49 kD; Observed band size: 50 kD)

STORAGE

Store at 4°C short term. For long term storage, store at -20°C, avoiding freeze/thaw cycles.

NOTE

For Research Use Only. Not for diagnostic, therapeutics, prophylactic or in vivo use.