

**DATASHEET**

**S100-G Rabbit Polyclonal Antibody**

CAT. NO. APA11148

**KEY FEATURES**

Target	S100-G	Source / Host	Rabbit
Reactivity	Human, Mouse, Rat, Bovine, Pig	Clonality	Polyclonal
Applications	WB	Conjugation	Unconjugated
Form / Buffer	Liquid in 0.42% Potassium phosphate, 0.87% Sodium chloride, pH 7.3, 30% glycerol, and 0.01% sodium azide.		Storage at-20°C

**BACKGROUND**

This gene encodes calbindin D9K, a vitamin D-dependent calcium-binding protein. This cytosolic protein belongs to a family of calcium-binding proteins that includes calmodulin, parvalbumin, troponin C, and S100 protein. In the intestine, the protein is vitamin D-dependent and its expression correlates with calcium transport activity. The protein may increase Ca<sup>2+</sup> absorption by buffering Ca<sup>2+</sup> in the cytoplasm and increase ATP-dependent Ca<sup>2+</sup> transport in duodenal basolateral membrane vesicles.

**APPLICATION**

To ensure optimal assay performance, AREX recommends conducting reagent titration tailored to each testing system for optimal detection results.

WB	1:500 - 1:1000
----	----------------

\*Results are sample-specific. Please refer to your local assay conditions and test parameters for reference.

**PRODUCT OVERVIEW**

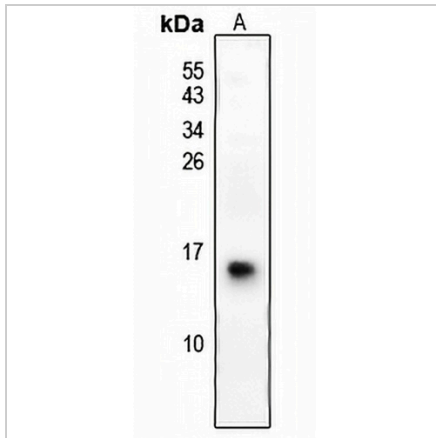
Description	Rabbit polyclonal antibody to S100-G
Specificity	Recognizes endogenous levels of S100-G protein.
Antibody Type	Primary antibody
Immunogen	KLH-conjugated synthetic peptide encompassing a sequence within the center region of human S100-G. The exact sequence is proprietary.
Purification	The antibody was purified by immunogen affinity chromatography.
Molecular Weight	Predicted: 9 kD; Observed: 16 kD
Form/Buffer	Liquid in 0.42% Potassium phosphate, 0.87% Sodium chloride, pH 7.3, 30% glycerol, and 0.01% sodium azide.
Alternative Names	CABP9K; CALB3; S100D; Protein S100-G; Calbindin-D9k; S100 calcium-binding protein G; Vitamin D-dependent calcium-binding protein intestinal; CABP
Gene Symbol	S100G
Entrez Gene	795(Human); 12309(Mouse); 24249(Rat)
SwissProt	P29377(Human); P97816(Mouse); P02634(Rat)

\*AREX continuously optimizes our products. Webpage content may not reflect the latest updates. For inquiries, please contact [info@arexbio.com](mailto:info@arexbio.com) or your local distributor.

\*Clone Number, Reactivity, Source/Host and Clonality can be found in the product name and Key Features section above.

**DATASHEET****S100-G Rabbit Polyclonal Antibody**

CAT. NO. APA11148

**DATA**

Western blot analysis of S100-G expression in rat spleen (A) whole cell lysates. (Predicted band size: 9 kD; Observed band size: 16 kD)

**STORAGE**

Store at 4°C short term. For long term storage, store at -20°C, avoiding freeze/thaw cycles.

**NOTE**

For Research Use Only. Not for diagnostic, therapeutics, prophylactic or in vivo use.