

DATASHEET

CCL1 (BSA and Azide free) Rabbit Polyclonal Antibody

CAT. NO. APA11151

KEY FEATURES

Target	CCL1 (BSA and Azide free)	Source / Host	Rabbit
Reactivity	Human, Rat	Clonality	Polyclonal
Applications	WB, IF/ICC	Conjugation	Unconjugated
Form / Buffer	Liquid in PBS, pH 7.3.	Storage	at-20°C

BACKGROUND

Cytokine that is chemotactic for monocytes but not for neutrophils. Binds to CCR8.

APPLICATION

To ensure optimal assay performance, AREX recommends conducting reagent titration tailored to each testing system for optimal detection results.

WB	1:500 - 1:1000
IF/ICC	1:50 - 1:200

*Results are sample-specific. Please refer to your local assay conditions and test parameters for reference.

PRODUCT OVERVIEW

Description	Rabbit polyclonal antibody to CCL1
Specificity	Recognizes endogenous levels of CCL1 protein.
Antibody Type	Primary antibody
Immunogen	KLH-conjugated synthetic peptide encompassing a sequence within the center region of human CCL1. The exact sequence is proprietary.
Purification	The antibody was purified by immunogen affinity chromatography.
Molecular Weight	Predicted: 10 kD; Observed: 15 kD
Form/Buffer	Liquid in PBS, pH 7.3.
Alternative Names	SCYA1; C-C motif chemokine 1; Small-inducible cytokine A1; T lymphocyte-secreted protein I-309
Gene Symbol	CCL1
Entrez Gene	6346(Human)
SwissProt	P22362(Human)

*AREX continuously optimizes our products. Webpage content may not reflect the latest updates. For inquiries, please contact info@arexbio.com or your local distributor.

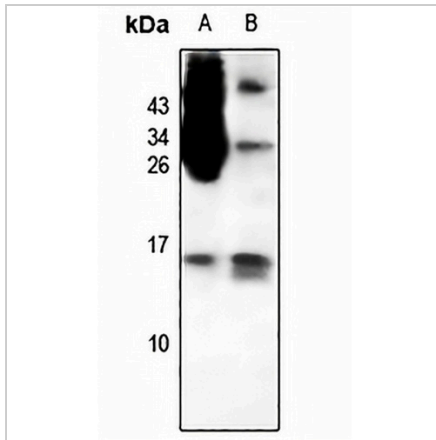
*Clone Number, Reactivity, Source/Host and Clonality can be found in the product name and Key Features section above.

DATASHEET

CCL1 (BSA and Azide free) Rabbit Polyclonal Antibody

CAT. NO. APA11151

DATA



Western blot analysis of CCL1 expression in H1792 (A), rat lung (B) whole cell lysates. (Predicted band size: 10 kD; Observed band size: 15 kD)

Data 2

Immunofluorescent analysis of CCL1 staining in MCF7 cells. Formalin-fixed cells were permeabilized with 0.1% Triton X-100 in TBS for 5-10 minutes and blocked with 3% BSA-PBS for 30 minutes at room temperature. Cells were probed with the primary antibody in 3% BSA-PBS and incubated overnight at 4 °C in a humidified chamber. Cells were washed with PBST and incubated with a AREX® Fluor 488 -conjugated secondary antibody (green) in PBS at room temperature in the dark. Phalloidin - AREX® Fluor 594 was used to stain Actin filaments (red). DAPI was used to stain the cell nuclei (blue).

STORAGE

Store at 4°C short term. For long term storage, store at -20°C, avoiding freeze/thaw cycles.

NOTE

For Research Use Only. Not for diagnostic, therapeutics, prophylactic or in vivo use.