

DATASHEET

SPTBN5 Rabbit Polyclonal Antibody

CAT. NO. APA11154

KEY FEATURES

Target	SPTBN5	Source / Host	Rabbit
Reactivity	Human	Clonality	Polyclonal
Applications	WB, IHC, IF/ICC	Conjugation	Unconjugated
Form / Buffer	Liquid in 0.42% Potassium phosphate, 0.87% Sodium chloride, pH 7.3, 30% glycerol, and 0.01% sodium azide.		Storage at-20°C

BACKGROUND

Spectrin beta chain, non-erythrocytic 5 (SPTBN5), also known as Beta-V spectrin. Belongs to the spectrin family Subunit: Probably associates with an alpha chain. Interacts (via C-terminus) with TRPC4 Subcellular location: Cytoplasm, cytoskeleton Tissue specificity: Expressed at very low levels in many tissues, with strongest expression in cerebellum, spinal cord, stomach, pituitary gland, liver, pancreas, salivary gland, kidney, bladder, and heart

APPLICATION

To ensure optimal assay performance, AREX recommends conducting reagent titration tailored to each testing system for optimal detection results.

WB	1:500 - 1:1000
IHC	1:50 - 1:200
IF/ICC	1:100 - 1:500

*Results are sample-specific. Please refer to your local assay conditions and test parameters for reference.

PRODUCT OVERVIEW

Description	Rabbit polyclonal antibody to SPTBN5
Specificity	Recognizes endogenous levels of SPTBN5 protein.
Antibody Type	Primary antibody
Immunogen	KLH-conjugated synthetic peptide encompassing a sequence within the center region of human SPTBN5. The exact sequence is proprietary.
Purification	The antibody was purified by immunogen affinity chromatography.
Molecular Weight	Predicted: 416 kD; Observed: 416 kD
Form/Buffer	Liquid in 0.42% Potassium phosphate, 0.87% Sodium chloride, pH 7.3, 30% glycerol, and 0.01% sodium azide.
Alternative Names	BSPECV; HUBSPECV; HUSPECV; Spectrin beta chain non-erythrocytic 5; Beta-V spectrin
Gene Symbol	SPTBN5
Entrez Gene	51332(Human)
SwissProt	Q9NRC6(Human)

*AREX continuously optimizes our products. Webpage content may not reflect the latest updates. For inquiries, please contact info@arexbio.com or your local distributor.

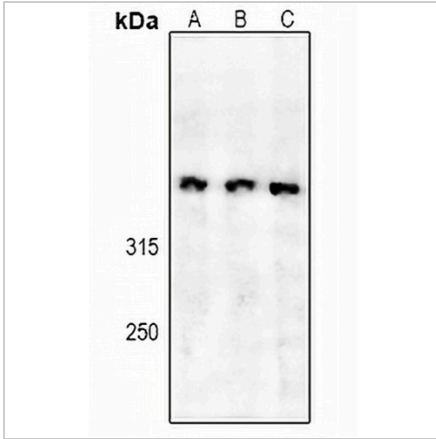
*Clone Number, Reactivity, Source/Host and Clonality can be found in the product name and Key Features section above.

DATASHEET

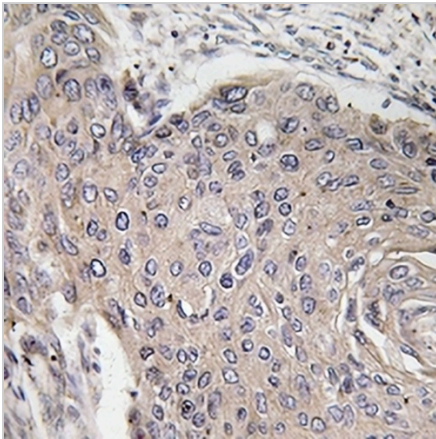
SPTBN5 Rabbit Polyclonal Antibody

CAT. NO. APA11154

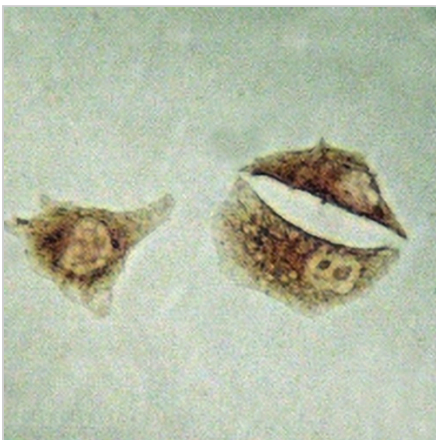
DATA



Western blot analysis of SPTBN5 expression in HEK293T (A), SGC7901 (B), Panc1 (C) whole cell lysates. (Predicted band size: 416 kD; Observed band size: 416 kD)



Immunohistochemical analysis of SPTBN5 staining in human lung cancer formalin fixed paraffin embedded tissue section. The section was pre-treated using heat mediated antigen retrieval with sodium citrate buffer (pH 6.0). The section was then incubated with the antibody at room temperature and detected using an HRP conjugated compact polymer system. DAB was used as the chromogen. The section was then counterstained with haematoxylin and mounted with DPX.



Immunocytochemistry analysis of SPTBN5 staining in HeLa cells. Formalin-fixed cells were permeabilized with 0.1% Triton X-100 in TBS for 5-10 minutes and blocked with 3% BSA-PBS for 30 minutes at room temperature. Cells were probed with the primary antibody in 3% BSA-PBS and incubated overnight at 4 °C in a humidified chamber. Cells were washed with PBST and incubated with a HRP-conjugated secondary antibody in PBS at room temperature. DAB was used as the chromogen.

STORAGE

Store at 4°C short term. For long term storage, store at -20°C, avoiding freeze/thaw cycles.

NOTE

For Research Use Only. Not for diagnostic, therapeutics, prophylactic or in vivo use.