

DATASHEET

GITRL Rabbit Polyclonal Antibody

CAT. NO. APA11158

KEY FEATURES

Target	GITRL	Source / Host	Rabbit
Reactivity	Human, Mouse, Rat	Clonality	Polyclonal
Applications	WB	Conjugation	Unconjugated
Form / Buffer	Liquid in 0.42% Potassium phosphate, 0.87% Sodium chloride, pH 7.3, 30% glycerol, and 0.01% sodium azide.		Storage at-20°C

BACKGROUND

Cytokine that binds to TNFRSF18/AITR/GITR. Regulates T-cell responses. Can function as costimulator and lower the threshold for T-cell activation and T-cell proliferation. Important for interactions between activated T-lymphocytes and endothelial cells. Mediates activation of NF-kappa-B. Triggers increased phosphorylation of STAT1 and up-regulates expression of VCAM1 and ICAM1 . Promotes leukocyte adhesion to endothelial cells . Regulates migration of monocytes from the splenic reservoir to sites of inflammation .

APPLICATION

To ensure optimal assay performance, AREX recommends conducting reagent titration tailored to each testing system for optimal detection results.

WB	1:500 - 1:1000
----	----------------

*Results are sample-specific. Please refer to your local assay conditions and test parameters for reference.

PRODUCT OVERVIEW

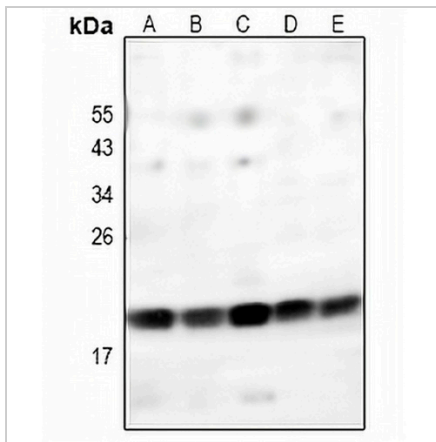
Description	Rabbit polyclonal antibody to GITRL
Specificity	Recognizes endogenous levels of GITRL protein.
Antibody Type	Primary antibody
Immunogen	KLH-conjugated synthetic peptide encompassing a sequence within the center region of human GITRL. The exact sequence is proprietary.
Purification	The antibody was purified by immunogen affinity chromatography.
Molecular Weight	Predicted: 20 kD; Observed: 20 kD
Form/Buffer	Liquid in 0.42% Potassium phosphate, 0.87% Sodium chloride, pH 7.3, 30% glycerol, and 0.01% sodium azide.
Alternative Names	AITRL; GITRL; TL6; Tumor necrosis factor ligand superfamily member 18; Activation-inducible TNF-related ligand; AITRL; Glucocorticoid-induced TNF-related ligand; hGITRL
Gene Symbol	TNFSF18
Entrez Gene	8995(Human); 240873(Mouse)
SwissProt	Q9UNG2(Human); Q7TS55(Mouse)

*AREX continuously optimizes our products. Webpage content may not reflect the latest updates. For inquiries, please contact info@arexbio.com or your local distributor.

*Clone Number, Reactivity, Source/Host and Clonality can be found in the product name and Key Features section above.

DATASHEET**GITRL Rabbit Polyclonal Antibody**

CAT. NO. APA11158

DATA

Western blot analysis of GITRL expression in SKOV3 (A), A2780 (B), HEK293T (C), mouse testis (D), rat testis (E) whole cell lysates. (Predicted band size: 20 kD; Observed band size: 20 kD)

STORAGE

Store at 4°C short term. For long term storage, store at -20°C, avoiding freeze/thaw cycles.

NOTE

For Research Use Only. Not for diagnostic, therapeutics, prophylactic or in vivo use.