

DATASHEET

CHRM2 Rabbit Polyclonal Antibody

CAT. NO. APA11170

KEY FEATURES

Target	CHRM2	Source / Host	Rabbit
Reactivity	Human, Mouse, Rat, Bovine, Pig	Clonality	Polyclonal
Applications	WB, IF/ICC	Conjugation	Unconjugated
Form / Buffer	Liquid in 0.42% Potassium phosphate, 0.87% Sodium chloride, pH 7.3, 30% glycerol, and 0.01% sodium azide.		Storage at-20°C

BACKGROUND

Muscarinic receptor for acetylcholine, a neurotransmitter found in the brain, neuromuscular junctions and the autonomic ganglia . Ligand binding causes a conformation change that triggers signaling via guanine nucleotide-binding proteins (G proteins) and modulates the activity of downstream effectors, such as adenylate cyclase . CHRM2 is coupled to G(i)/G(o) (GNAI1 or GNAO1) G proteins and mediates signaling by inhibiting adenylate cyclase activity .

APPLICATION

To ensure optimal assay performance, AREX recommends conducting reagent titration tailored to each testing system for optimal detection results.

WB	1:500 - 1:1000
IF/ICC	1:100 - 1:500

*Results are sample-specific. Please refer to your local assay conditions and test parameters for reference.

PRODUCT OVERVIEW

Description	Rabbit polyclonal antibody to CHRM2
Specificity	Recognizes endogenous levels of CHRM2 protein.
Antibody Type	Primary antibody
Immunogen	KLH-conjugated synthetic peptide encompassing a sequence within the center region of human CHRM2. The exact sequence is proprietary.
Purification	The antibody was purified by immunogen affinity chromatography.
Molecular Weight	Predicted: 51 kD; Observed: 52; 70 kD
Form/Buffer	Liquid in 0.42% Potassium phosphate, 0.87% Sodium chloride, pH 7.3, 30% glycerol, and 0.01% sodium azide.
Alternative Names	Muscarinic acetylcholine receptor M2
Gene Symbol	CHRM2
Entrez Gene	1129(Human); 243764(Mouse); 102551851; 81645(Rat)
SwissProt	P08172(Human); Q9ERZ4(Mouse); P10980(Rat)

*AREX continuously optimizes our products. Webpage content may not reflect the latest updates. For inquiries, please contact info@arexbio.com or your local distributor.

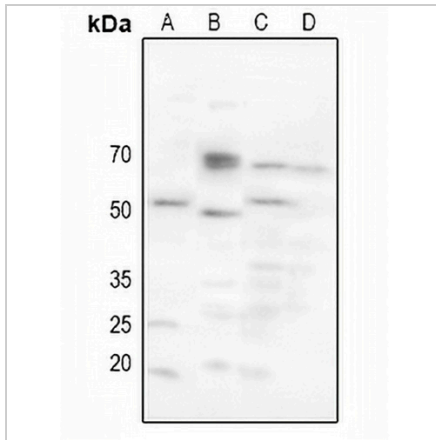
*Clone Number, Reactivity, Source/Host and Clonality can be found in the product name and Key Features section above.

DATASHEET

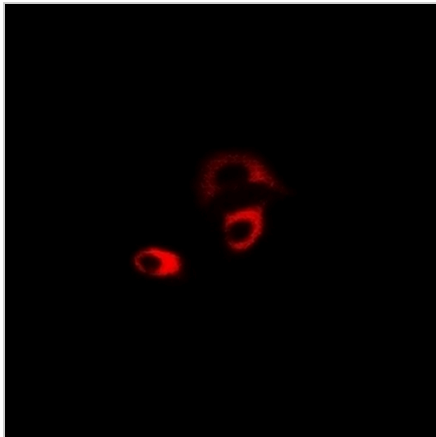
CHRM2 Rabbit Polyclonal Antibody

CAT. NO. APA11170

DATA



Western blot analysis of CHRM2 expression in HEK293T (A), mouse lung (B), mouse kidney (C), rat kidney (D) whole cell lysates. (Predicted band size: 51 kD; Observed band size: 52; 70 kD)



Immunofluorescent analysis of CHRM2 staining in LOVO cells. Formalin-fixed cells were permeabilized with 0.1% Triton X-100 in TBS for 5-10 minutes and blocked with 3% BSA-PBS for 30 minutes at room temperature. Cells were probed with the primary antibody in 3% BSA-PBS and incubated overnight at 4 °C in a humidified chamber. Cells were washed with PBST and incubated with a Alexa Fluor 594-conjugated secondary antibody (red) in PBS at room temperature in the dark.

STORAGE

Store at 4°C short term. For long term storage, store at -20°C, avoiding freeze/thaw cycles.

NOTE

For Research Use Only. Not for diagnostic, therapeutics, prophylactic or in vivo use.