

**DATASHEET**

**IL-20 Rabbit Polyclonal Antibody**

CAT. NO. APA11175

**KEY FEATURES**

Target	IL-20	Source / Host	Rabbit
Reactivity	Human, Mouse, Rat	Clonality	Polyclonal
Applications	WB	Conjugation	Unconjugated
Form / Buffer	Liquid in 0.42% Potassium phosphate, 0.87% Sodium chloride, pH 7.3, 30% glycerol, and 0.01% sodium azide.		Storage at -20°C

**BACKGROUND**

Pro-inflammatory and angiogenic cytokine mainly secreted by monocytes and skin keratinocytes that plays crucial roles in immune responses, regulation of inflammatory responses, hemopoiesis, as well as epidermal cell and keratinocyte differentiation . Enhances tissue remodeling and wound-healing activities and restores the homeostasis of epithelial layers during infection and inflammatory responses to maintain tissue integrity . Affects multiple actin-mediated functions in activated neutrophils leading to inhibition of phagocytosis, granule exocytosis, and migration . Exert its effects via the type I IL-20 receptor complex consisting of IL20RA and IL20RB .

**APPLICATION**

To ensure optimal assay performance, AREX recommends conducting reagent titration tailored to each testing system for optimal detection results.

WB	1:500 - 1:1000
----	----------------

\*Results are sample-specific. Please refer to your local assay conditions and test parameters for reference.

**PRODUCT OVERVIEW**

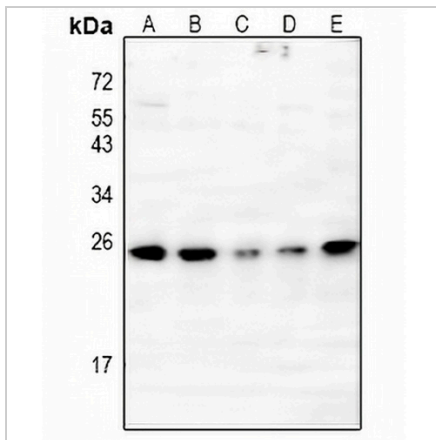
Description	Rabbit polyclonal antibody to IL-20
Specificity	Recognizes endogenous levels of IL-20 protein.
Antibody Type	Primary antibody
Immunogen	KLH-conjugated synthetic peptide encompassing a sequence within the center region of human IL-20. The exact sequence is proprietary.
Purification	The antibody was purified by immunogen affinity chromatography.
Molecular Weight	Predicted: 20 kD; Observed: 25 kD
Form/Buffer	Liquid in 0.42% Potassium phosphate, 0.87% Sodium chloride, pH 7.3, 30% glycerol, and 0.01% sodium azide.
Alternative Names	ZCYTO10; Interleukin-20; IL-20; Cytokine Zcyto10
Gene Symbol	IL20
Entrez Gene	50604(Human); 58181(Mouse)
SwissProt	Q9NYY1(Human); Q9JKV9(Mouse)

\*AREX continuously optimizes our products. Webpage content may not reflect the latest updates. For inquiries, please contact [info@arexbio.com](mailto:info@arexbio.com) or your local distributor.

\*Clone Number, Reactivity, Source/Host and Clonality can be found in the product name and Key Features section above.

**DATASHEET****IL-20 Rabbit Polyclonal Antibody**

CAT. NO. APA11175

**DATA**

Western blot analysis of IL-20 expression in A375 (A), PC3 (B), MCF7 (C), PMVEC (D), 3T3L1 (E) whole cell lysates. (Predicted band size: 20 kD; Observed band size: 25 kD)

**STORAGE**

Store at 4°C short term. For long term storage, store at -20°C, avoiding freeze/thaw cycles.

**NOTE**

For Research Use Only. Not for diagnostic, therapeutics, prophylactic or in vivo use.