

DATASHEET

RAMP3 Rabbit Polyclonal Antibody

CAT. NO. APA11184

KEY FEATURES

Target	RAMP3	Source / Host	Rabbit
Reactivity	Human, Mouse, Rat	Clonality	Polyclonal
Applications	WB, IHC, IF/ICC	Conjugation	Unconjugated
Form / Buffer	Liquid in 0.42% Potassium phosphate, 0.87% Sodium chloride, pH 7.3, 30% glycerol, and 0.01% sodium azide.		Storage at-20°C

BACKGROUND

Accessory protein that interacts with and modulates the function of G-protein coupled receptors including calcitonin gene-related peptide type 1 receptor (CALCRL), calcitonin receptor (CALCR) and G-protein coupled estrogen receptor 1 (GPER1), calcitonin receptor (CALCR) and G-protein coupled estrogen receptor 1 (GPER1). Required for the transport of CALCRL and GPER1 receptors to the plasma membrane. Plays a role in cardioprotection by reducing cardiac hypertrophy and perivascular fibrosis in a GPER1-dependent manner. Together with CALCRL, form a receptor complex for adrenomedullin/ADM and intermedin/ADM2. Together with CALCR, act as a receptor complex for amylin/IAPP.

APPLICATION

To ensure optimal assay performance, AREX recommends conducting reagent titration tailored to each testing system for optimal detection results.

WB	1:500 - 1:1000
IHC	1:50 - 1:100
IF/ICC	1:50 - 1:200

*Results are sample-specific. Please refer to your local assay conditions and test parameters for reference.

PRODUCT OVERVIEW

Description	Rabbit polyclonal antibody to RAMP3
Specificity	Recognizes endogenous levels of RAMP3 protein.
Antibody Type	Primary antibody
Immunogen	KLH-conjugated synthetic peptide encompassing a sequence within the center region of human RAMP3. The exact sequence is proprietary.
Purification	The antibody was purified by immunogen affinity chromatography.
Molecular Weight	Predicted: 16 kD; Observed: 17 kD
Form/Buffer	Liquid in 0.42% Potassium phosphate, 0.87% Sodium chloride, pH 7.3, 30% glycerol, and 0.01% sodium azide.
Alternative Names	Receptor activity-modifying protein 3; Calcitonin-receptor-like receptor activity-modifying protein 3; CRLR activity-modifying protein 3
Gene Symbol	RAMP3
Entrez Gene	10268(Human); 56089(Mouse); 56820(Rat)
SwissProt	O60896(Human); Q9WUP1(Mouse); Q9JJ73(Rat)

*AREX continuously optimizes our products. Webpage content may not reflect the latest updates. For inquiries, please contact info@arexbio.com or your local distributor.

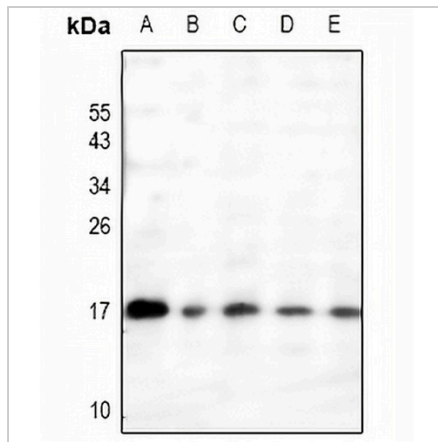
*Clone Number, Reactivity, Source/Host and Clonality can be found in the product name and Key Features section above.

DATASHEET

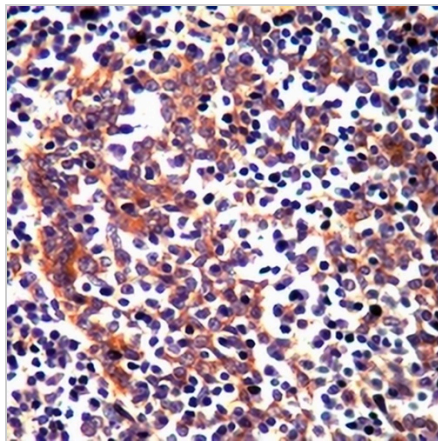
RAMP3 Rabbit Polyclonal Antibody

CAT. NO. APA11184

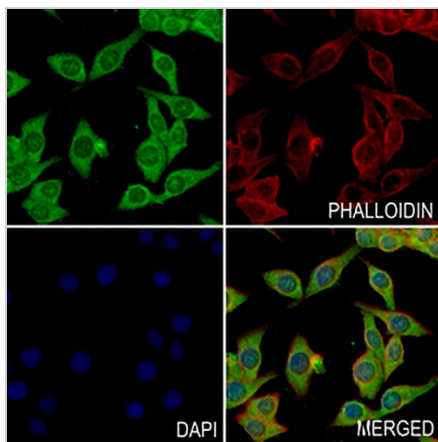
DATA



Western blot analysis of RAMP3 expression in H1792 (A), MCF7 (B), Myla2059 (C), 3T3L1 (D), PMVEC (E) whole cell lysates. (Predicted band size: 16 kD; Observed band size: 17 kD)



Immunohistochemical analysis of RAMP3 staining in human tonsil cancer formalin fixed paraffin embedded tissue section. The section was pre-treated using heat mediated antigen retrieval with sodium citrate buffer (pH 6.0). The section was then incubated with the antibody at room temperature and detected using an HRP conjugated compact polymer system. DAB was used as the chromogen. The section was then counterstained with haematoxylin and mounted with DPX.



Immunofluorescent analysis of RAMP3 staining in MCF7 cells. Formalin-fixed cells were permeabilized with 0.1% Triton X-100 in TBS for 5-10 minutes and blocked with 3% BSA-PBS for 30 minutes at room temperature. Cells were probed with the primary antibody in 3% BSA-PBS and incubated overnight at 4 °C in a humidified chamber. Cells were washed with PBST and incubated with a AREX® Fluor 488 -conjugated secondary antibody (green) in PBS at room temperature in the dark. Phalloidin - AREX® Fluor 594 was used to stain Actin filaments (red). DAPI was used to stain the cell nuclei (blue).

STORAGE

Store at 4°C short term. For long term storage, store at -20°C, avoiding freeze/thaw cycles.

NOTE

For Research Use Only. Not for diagnostic, therapeutics, prophylactic or in vivo use.